



# Sunderland Joint Strategic Needs Assessment Summary (JSNA)

2025–2026

**Sunderland  
City Council**

**NHS**  
North East and  
North Cumbria

# Contents

Our 2025–2026 JSNA, what has changed?	3	Digital inclusion	28
Partnership collaboration	4	Recorded crime	29
Community assets (Marmot 5)	5	Domestic abuse	30
The eight Marmot policy objectives	6	Substance use and alcohol	32
Population and change	7	Smoking	33
Ethnicity	8	Sexual health	34
The building blocks of health	9	Living with obesity	35
Commercial determinants of health	10	Physical activity	36
Refreshing our Healthy City Plan	11	Gambling	37
Insights informing the Healthy City Plan	12	Cancer	39
A summary of key themes from the insights	13	Long term conditions	40
What have people in Sunderland told us? - Healthy Places	14	Disability	41
What have people in Sunderland told us? - Healthy Communities	15	Mental health and wellbeing	42
What have people in Sunderland told us? - Healthy People	16	Living well summary	44
Best Start in Life (Marmot 1)	17	Ageing well summary	45
Starting well (Marmot 2 and 4)	18	Hearing and sight impairment	46
Life expectancy	19	Older people and poverty	47
Child poverty	20	Ageing well summary	48
Family hubs	21	Inclusion health	49
Starting well summary	22	Migrant health (Marmot 7)	51
Living well (Marmot 4)	23	Health Protection	52
Sunderland residents' survey	24	Key health challenges identified through this JSNA (Marmot 6)	53
Work and Health (Marmot 3)	25	Where to find out more	54
Employment and Education (Marmot 1, 2 and 3)	26		
Poverty and financial wellbeing (Marmot 4)	27		

# Our 2025–2026 JSNA, what has changed?

Some key changes to outcomes since Sunderland's previous overarching JSNA are:

- Prevalence of smoking amongst adults has continued to fall and was 12.3% in 2023; this represents a 0.9 percentage point reduction from the previous year's figure
- Smoking during pregnancy has reduced to 8.7% in 2024–25, this represents a 2.5 percentage point reduction from the previous year and is the lowest in Sunderland for the past 12 years
- Breastfeeding prevalence has improved to 37.3% in 2024–25, an improvement from 33.6% the previous year
- Admission episodes for alcohol-specific conditions (under 18s) have continued to reduce year on year, and have more than halved from 116.6 per 100,000 (190 people) in 2014–2016, to 49.3 (81 people) in 2022/2024
- The prevalence of people living with overweight (including obesity) in adults 18 years and over has increased from 65.1% to 71.8% in 2023–24
- Uptake of childhood immunisation remains high; 94.7% of Sunderland's 2-year-old children had an MMR vaccination during 2023–24, which is significantly higher than the England average of 88.9%
- The Census 2021 estimates 1,800 people migrated to Sunderland from outside the UK in the one-year period prior to the Census

# Partnership collaboration

Sunderland local authority gains many insights through research, partnerships and collaborative working; these initiatives include:

Please click any of the links below for further information:

[Sunderland Ageing Well Ambassadors - Sunderland City Council](#)

[Sunderland All Together Consortium CIO](#)

**Family hubs and Start for life programmes**

[Sunderland Family Hub - What's on link](#)

[Sunderland Residents' Survey](#)

Young people's Health Related Behaviour Survey (HRBS) [Pupil surveys](#)

**Safer Sunderland Partnership (SSP)**

[Safer Sunderland Partnership - Sunderland City Council](#)

Collaborative partnerships like the **Drug & Alcohol Harm Reduction Group** [Caring Changes - Wear Recovery - Sunderland](#) and the [Smoke free partnership](#)

A range of venues **supporting breastfeeding** families out and about in the city [Breastfeeding Friendly Sunderland - Links for Life](#)

**Links for Life**

Aiming to help improve people's health and wellbeing [www.linksforlifesunderland.co.uk](http://www.linksforlifesunderland.co.uk)

Working with the **voluntary and community sectors**, including the creation of a [Digital Directory](#) network throughout the city

**Together for children (TfC)**

[Together or Children](#)

# Community assets (Marmot 5)

‘Links for Life Sunderland’ aims to connect partners across the city to enable people in Sunderland to tap into a range of information, services, and activities in the community to help improve their health and wellbeing.

[www.linksforlifesunderland.co.uk](http://www.linksforlifesunderland.co.uk)

Sunderland is building on its **assets** within our communities and working with our **communities** to support improvements in health outcomes and **reduce health inequalities**, and to strengthen community resilience. This is detailed in our Sunderland Healthy City Plan 2020–2035.

<https://www.sunderland.gov.uk/healthycityplan>

# The eight Marmot policy objectives

Sunderland Health and Wellbeing Board has adopted the eight Marmot policy objectives. They emphasise the role that partners across the city can play in reducing health inequalities – tackling the root causes of poor health. These are the eight Marmot policy objectives:

1. Give every child the best start in life
2. Enable all children, young people and adults to maximise their capabilities and have control over their lives
3. Create fair employment and good work for all
4. Ensure a healthy standard of living for all
5. Create and develop sustainable places and communities
6. Strengthen the role and impact of ill health prevention
7. Tackle racism, discrimination and their outcomes
8. Pursue environmental sustainability and health equity together

[Marmot Review report - 'Fair Society, Healthy Lives | Local Government Association](#)

# Population and change

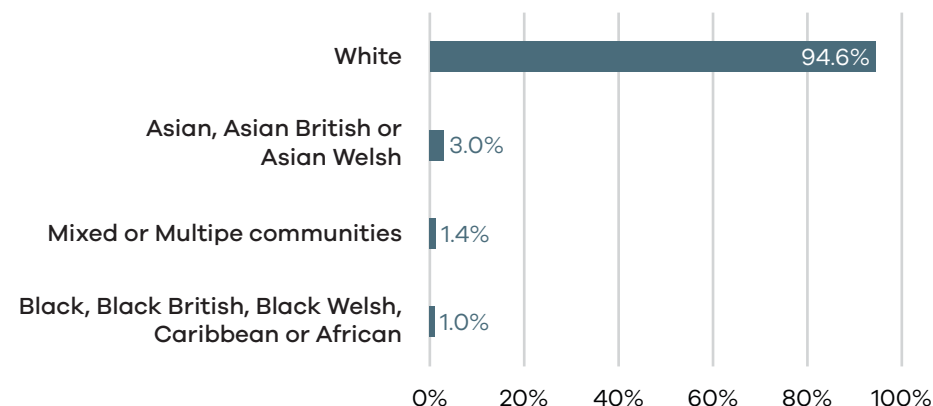
- Sunderland has a population of 288,606 (mid-year estimate in 2024)
- The population in Sunderland has increased by 2.7% (7,548 people) since mid year 2023
- Recent GP registered population data shows an increase from 290,549 to 294,330 between 2021 and 2024
- Compared to England, the population of Sunderland has a higher proportion of older people
- 20.8% of the Sunderland population are aged 65 and over, this is higher than the England figure at 18.6%
- It is projected that the Sunderland population aged 65 and over will grow to 23.7% of the population by 2047

# Ethnicity

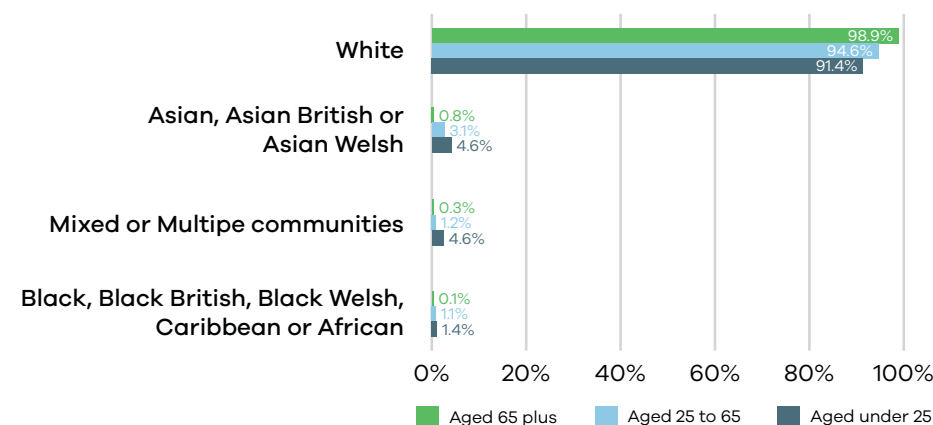
- White ethnic communities represent 94.6% of the population followed by Asian communities (3%), Mixed and multiple ethnicities (1.4%), and Black ethnic communities (1%)
- Between 2011 and 2021 the proportion of people from non-White ethnic backgrounds increased from 4.1% to 5.3% of the total population
- Ethnic minority communities tend to have a younger age profile, with a higher proportion of individuals under 25, and a lower proportion of people aged 65 and over compared to the overall Sunderland population

## Proportion of ethnic communities

(Census: 2021)



## Proportion of ethnic communities by age-band



# The building blocks of health

We need the building blocks of health to thrive

Our health is shaped by the world around us

A good start in life, a safe and warm home, decent work, enough money to pay the bills and access to affordable, nutritious food are the building blocks of health and wellbeing.

The Sunderland approach focuses on strengthening the building blocks of health in all stages of life - from childhood to adolescence, to working age and older age

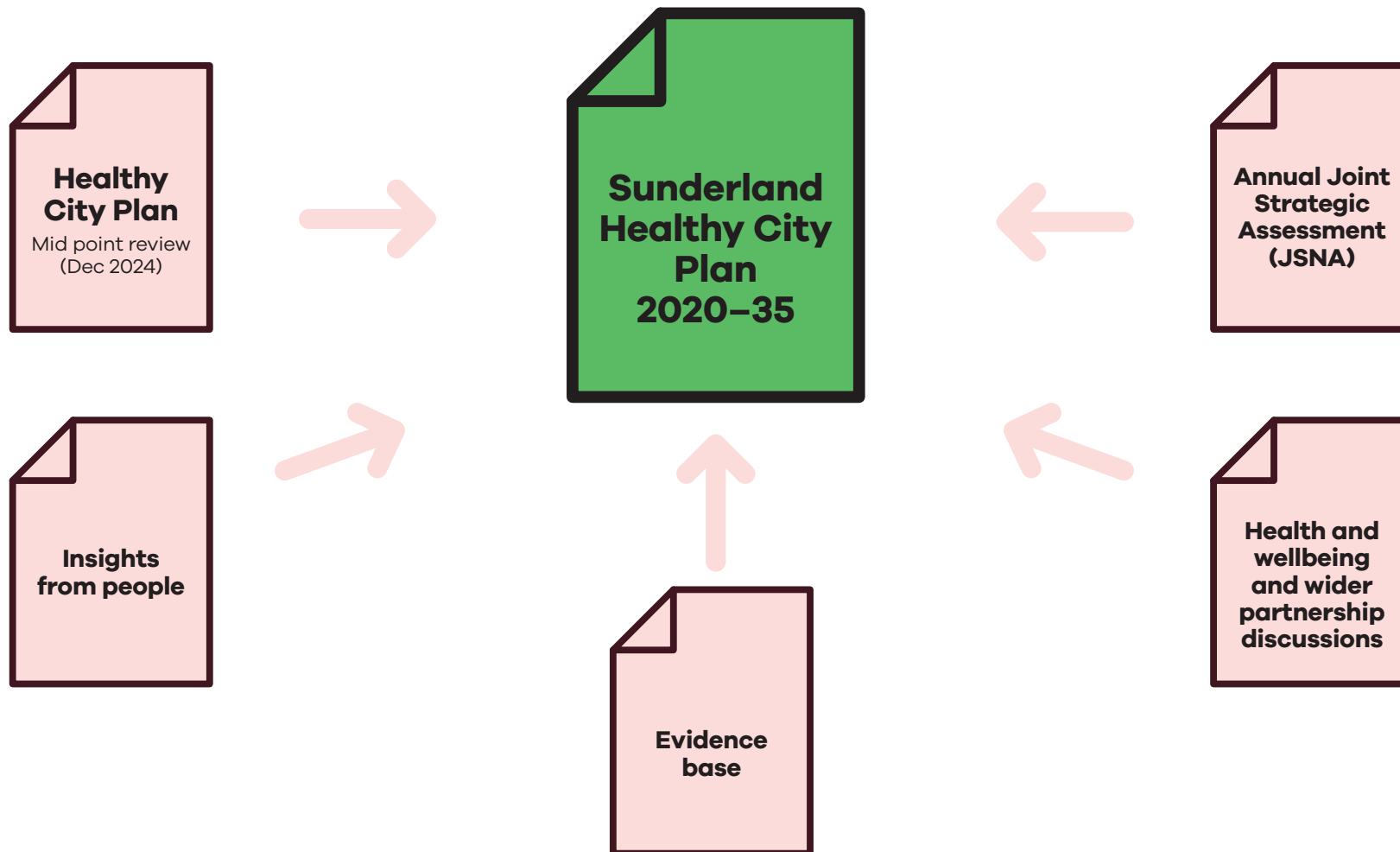


# Commercial determinants of health

- **The commercial determinants of health** are the conditions, actions and omissions by corporate bodies that affect our health - both positively and negatively
- Unhealthy commodity industries (UCIs) are for-profit and commercial enterprises that deliver commercial products that lead to significant associated negative health consequences
- Commercial determinants of health drive inequalities; not all harmful products are consumed equally, and some populations are more vulnerable to the negative impacts. People in the most deprived areas are more likely to die from non-communicable diseases than those in the least deprived areas - they are also more likely to be targeted as consumers through advertising and retail units
- Further information on commercial determinants can be found at: [DirectorOfPublicHealthAnnualReport2022-2023.pdf \(sunderland.gov.uk\)](#)

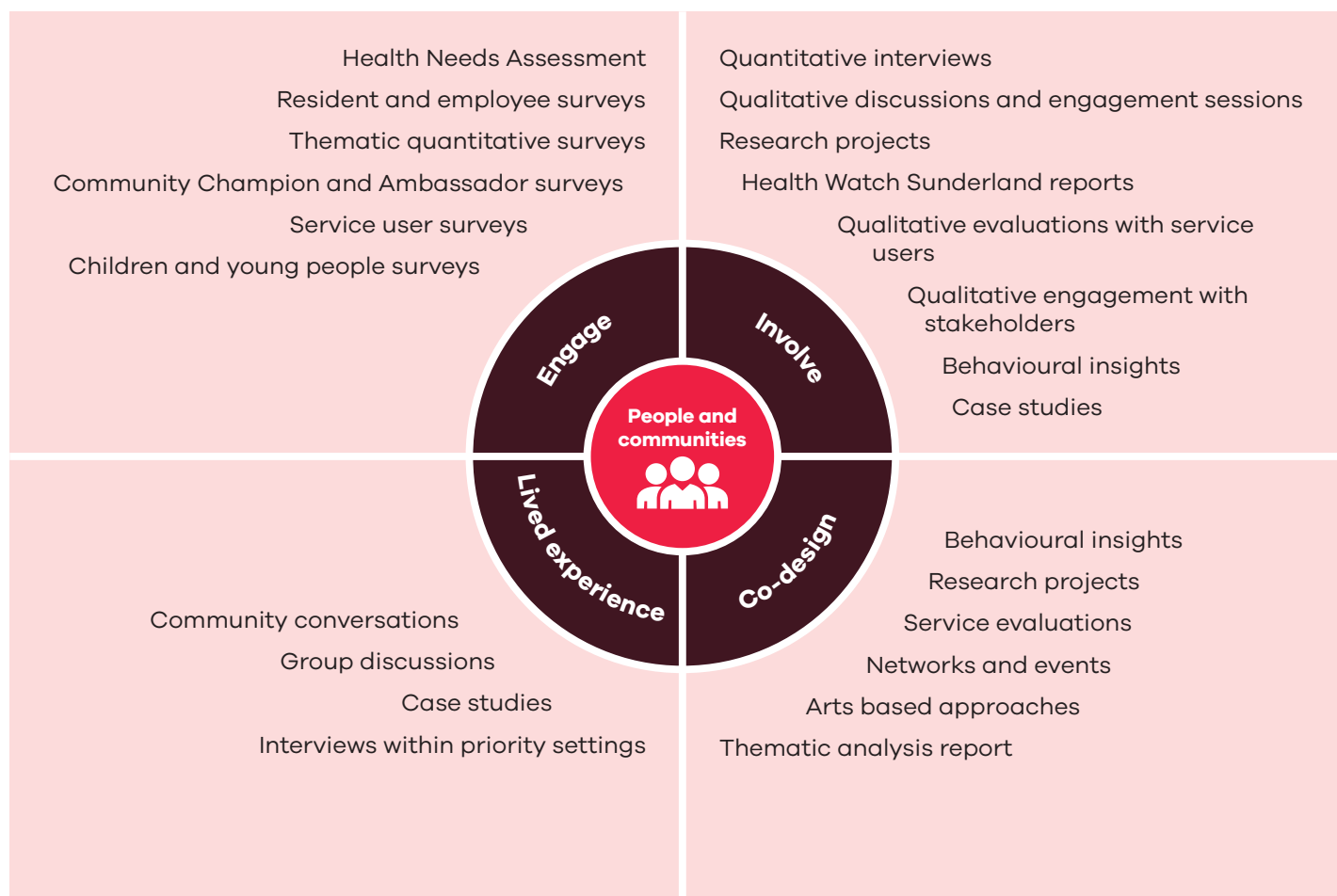
# Refreshing our Healthy City Plan

The Sunderland Healthy City Plan (2020–2035) is our Joint Local Health and Wellbeing Strategy - our shared roadmap to improve health across the city. The refreshed Plan builds on the latest insight and analysis of health needs for Sunderland:

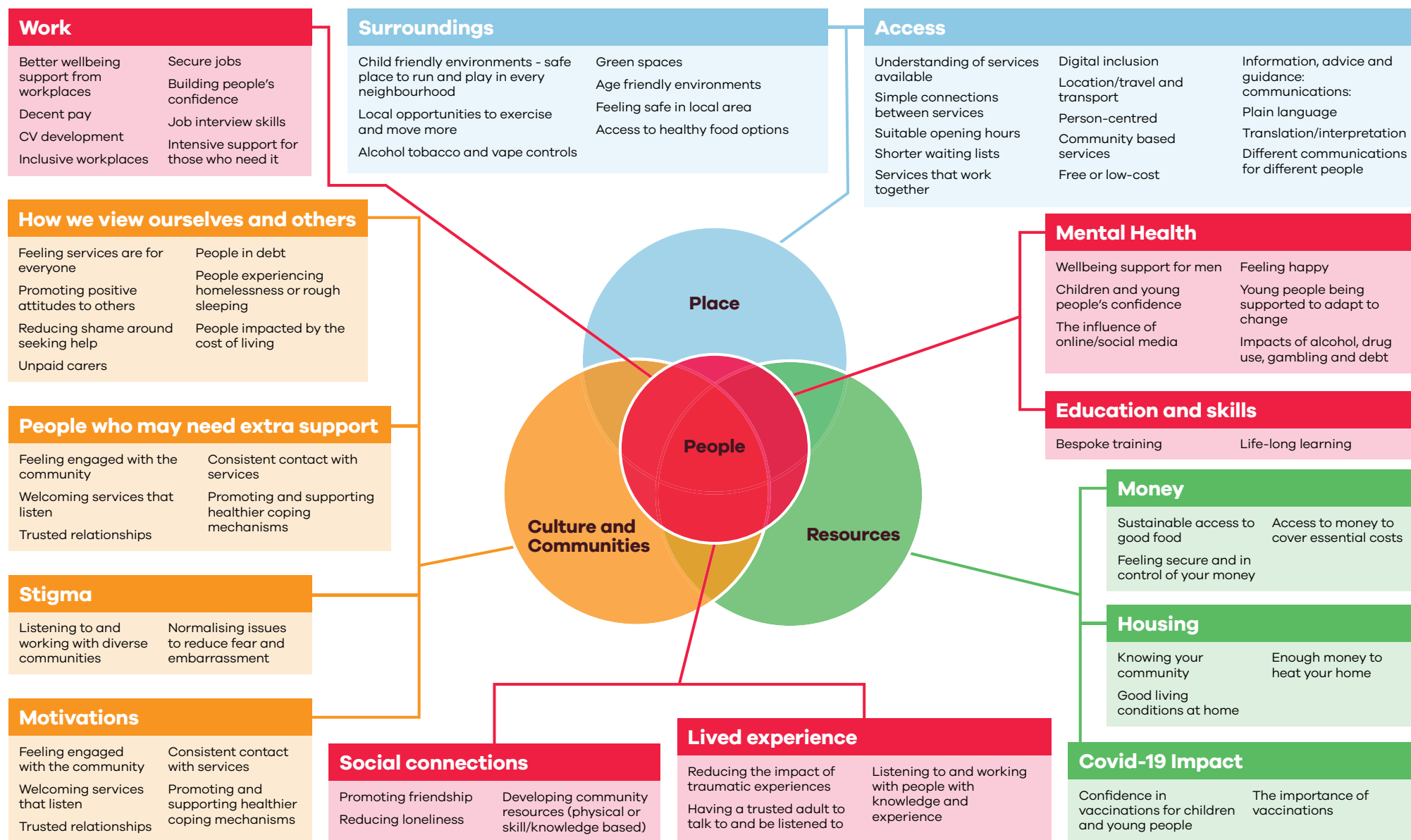


# Insights informing the Healthy City Plan

The people of Sunderland and our communities are at the heart of the Sunderland Healthy City Plan (2020–2035). To refresh our Healthy City Plan we collated health and wellbeing insights to understand what local people think is important. The infographic below shows where these valuable insights came from:



# A summary of key themes from the insights



# What have people in Sunderland told us? - Healthy Places

- **Our surroundings** - like buildings, transportation, homes, and parks - should be safe, welcoming, and easy for everyone to use, no matter their age or ability
- **Housing has a big impact on our health.** Things like living in a warm, energy-efficient home that's free from damp and mould, being able to afford heating, and feeling part of our local community all help us stay well
- **Having access to healthy, affordable food options** is essential for helping people eat well and stay healthy
- **Having flexible and inclusive workplaces, schools/further education and public community spaces** make it easier for people to get the support they need
- **Being able to use green spaces** and having local places to be active helps support both mental and physical health
- **Activities that bring different generations together, volunteering, and growing community resources** helps people feel connected, less isolated, and like they belong in their community

# What have people in Sunderland told us? - Healthy Communities

- **Having enough money** for basic needs and feeling in control of money affects what people eat, the homes they live in, and their mental wellbeing
- **Having a secure job** with fair pay, in a workplace that supports your wellbeing, can really help people stay healthy
- **Training and life-long learning opportunities** can help build confidence and skills. But some people face barriers, like low confidence or challenging past experiences at school
- **Helping people with personalised support to access work or education** - like building a CV or practising job interviews - boosts their confidence and improves their health
- **Engaging people with 'lived experience'** of domestic abuse, drug and alcohol harms, and financial hardship helps us understand what 'excellent' really means and encourages bold, creative solutions that meet real needs
- **Listening to and working with diverse communities** helps make sure services are responsive, inclusive, and meet the unique needs of everyone
- **Having positive attitudes towards others** and encouraging relationships with other people, boosts our wellbeing and encourages us to interact with our community and use services
- **Friendly and caring local services that listen** and recognise how past experiences, like trauma, can affect people's health, behaviour, and how they interact with services, build trust and encourage more people to use them
- **Motivation, available time, and health all affect how much physical activity people do**, whereas free, low-cost activities, designed for people to enjoy, help people stay active and healthy
- **Clear communication and services that respect different cultures** are important for meeting the needs of different communities
- **Using plain language** and offering information in different formats helps people understand and use services
- **People's confidence in vaccines** depends on their trust, clear communication, and how they understand the risks

# What have people in Sunderland told us? - Healthy People

- **Building confidence and learning to adapt to change** are important for children and young people. They also benefit from having a trusted adult who listens and supports them
- **Some people may need extra support** to take part in health and wellbeing activities because of their circumstances. This includes people experiencing domestic abuse or violence, homelessness, unpaid carers, those in debt, and those affected by the cost of living
- **Translation and interpretation services** are essential to make sure everyone can access services fairly
- **The rules around selling alcohol and tobacco** influence people's consumption patterns and therefore impact their health
- **Barriers to using services include** long waiting times, not knowing about the services, where they are located, and not having access to the internet or digital tools
- **When services avoid stigma and treat common challenges as normal**, with flexibility and understanding, it helps reduce shame and embarrassment. People are then more able to get help and access services such as foodbanks, stop smoking support, drug and alcohol treatment and recovery services, and safe refuge accommodation
- **Cultural and societal influences and expectations** affect mental health, so mental health support that is tailored works best
- **How we see ourselves and how we think others see us**, affects our confidence and wellbeing, as well as affecting our engagement with services
- **Mental health needs are increasing**, especially because of issues like alcohol and drug use, gambling, debt, and the effects of online and social media

# Best Start in Life (Marmot 1)

- **Smoking status at time of delivery** in Sunderland continues to fall and was 8.7% in 2024–25, down by 2.5 percentage points from the previous year of 11.2%. In addition, the gap is narrowing between Sunderland's rate and the regional and England average rate (currently 7.6% and 6.1% respectively)
- **Breastfeeding rates** also continue to improve, data during 2024–25 shows the prevalence of Sunderland mothers breastfeeding at 6–8 weeks was 37.3%

This is, however, lower than the North East average (41.0%) and significantly lower than the England average (55.6%)

- **Uptake of childhood immunisation** remains high, 94.7% of Sunderland's 2-year-old children had an MMR vaccination during 2023–24, this is significantly higher than the England average (89.1%) and higher than the North East average (93.9%)

However, there is variation in uptake for some communities and uptake is lower in more deprived areas.

The full JSNA for Best Start in Life can be read at:  
[Best Start in Life JSNA](#)

# Starting well (Marmot 2 and 4)

- During 2021–2023, the **infant mortality rate in Sunderland** was 3.3 per 1,000. This is lower than both the North East average (4.1) and England average (4.1). Overall, Sunderland has the 3rd lowest infant mortality rate in the North East
- During 2022–23, the **attendance of Sunderland’s 0–4 year-olds at A&E** was the 11th highest in England, and the 5th highest in the North East. Injuries to the head are a leading cause of injury related hospital admissions in under-fives, accounting for around 43% of admissions
- 27.2% of 5-year-olds had **visually obvious dental decay** during 2023/24, this is higher than both the Region (22.6%) and England (22.4%) averages
- During 2023–24, (42.3%) almost 1 in 2 Sunderland children in Year 6 (aged 10–11 years) were **living with overweight or obesity**

The Oral Health HNA can be read at: [OHNA Sunderland Sep23.pdf](#)

- During 2023–24, 67% of **children achieved a good level of development** at the end of Reception. This is currently a little above the North East (66.8%) average, and slightly below the England (67.7%) average
- During 2023–24, (23.9%) almost 1 in 4 Sunderland children in Reception (aged 4–5 years) were **living with overweight or obesity**
- The **under-18 conceptions rate for Sunderland** (rolling year to June 2022) was 24.1 per 1,000 (110 conceptions over the year). The gap between the Sunderland and England rate has decreased over the past year

# Life expectancy

- **Sunderland life expectancy at birth for males** during 2021–2023 is 76.5. This compares to 77.4 in the North East, and 79.1 in England
- **Healthy life expectancy** is 55.0 years, this is lower than the England figure of 61.5 years
- **Sunderland life expectancy at birth for females** during 2021–2023 is 80.9. This compares to 81.4 in the North East, and 83.1 in England
- **Healthy life expectancy** is 55.6 years, this is lower than the England figure of 61.9 years

Life expectancy for both males and females has risen over the previous period, by 0.4, for males, 0.3 for females. However, healthy life expectancy has fallen for both, by 1.6 for males, and 3.0 for females

# Child poverty

- The Income deprivation affecting children index shows the proportion of children aged 0–15 living in income deprived families, (excluding housing costs)
- 16 of Sunderland’s 25 wards are significantly worse than the England average
- Only 4 wards are significantly better than the England average
- Children born to a teenage mother have a 63% higher risk of living in poverty

Area	Count	Value	
England	1,777,642	17.1	
Sunderland	11,666	24.2	
Hendon	807	41.7	
Redhill	862	38.4	
Southwick	689	35.3	
Pallion	668	32.6	
St Anne’s	564	31.6	
Washington North	686	31.3	
Sandhill	659	29.9	
Copt Hill	566	28.2	
Silksworth	482	27.6	
Castle	600	26.8	
Hetton	537	26.2	
Millfield	572	25.9	
St Chad’s	369	25.6	
Shiney Row	455	21.0	
Ryhope	434	20.3	
Washington East	442	18.9	
Washington Central	317	18.0	
Houghton	371	17.9	
Washington West	377	17.5	
Washington South	290	16.9	
Barnes	279	16.0	
Doxford	279	12.6	
St Peter’s	191	11.8	
St Michael’s	140	10.8	
Fulwell	97	7.2	

# Family hubs

Sunderland, along with 74 other local authorities has received a share of £300 million investment from the Government to establish a Family Hubs and Start for Life programme.

[Sunderland Family Hub - What's on link](#)

The five Family Hubs are now launched and:

- Bring providers together to improve access to services
- Improve the connections between families, professionals, services and providers
- Put relationships at the heart of family support
- At the core of every Family Hub network is a great Start for Life for babies, from conception through to 2 years old. Support is also available to families of children aged up to 19, or to children with special educational needs and disabilities (SEND) aged up to 25. You can even register the birth of your baby too!
- Our ambition is to ensure that local families can access the right support, at the right time, in the right place, with the right people

## **Rainbow Family Hub**

Washington  
NE37 3AE  
0191 561 3995

## **Thorney Close Family Hub**

Sunderland  
SR3 4JQ  
0191 561 4127

## **Bunnyhill Family Hub**

Sunderland  
SR5 4BW  
0191 561 8126

## **Coalfield Family Hub**

Hetton  
DH5 9NE  
0191 561 6625

## **Winnibell Family Hub**

Hendon  
SR1 2HS  
0191 561 2850

# Starting well summary

Children and young people face significant health challenges and inequalities across the social gradient of health in Sunderland, this includes the following:

- More than half of Sunderland's 25 wards have **significantly higher levels of child poverty** than the England average
- Higher comparative levels of **smoking at time of delivery**, although, this is on a downward trend
- **Breastfeeding rates** continue to improve, although the rate is still lower than the North East and significantly lower than the national average
- The **under-18 conceptions gap** with England has decreased over the past 12 months
- **Infant mortality rate** is lower than both the North East and England averages
- **Uptake of childhood immunisation** remains strong
- During 2023–24, 42.3% (or 1,425 children) in Year 6 were **living with overweight or obesity**

# Living well (Marmot 4)

## Standards of living

- During 2022–23, 45% of people in Sunderland’s were living in an area at **highest risk of food insecurity**, a 1% point rise over the previous year. Sunderland is the 4th highest local authority in the North East area for food insecurity
- Within Sunderland, around 41% of people live in the most disadvantaged quintile<sup>1</sup> of all areas in England
- The **Sunderland Financial Wellbeing Strategy** summarises the ways the cost-of-living crisis impacts on the health and wellbeing of Sunderland’s communities, including the long-term income gap exacerbated by the cost-of-living crisis. It sets out our response to mitigate these effects in the short-term [Financial Wellbeing Strategy 2023–26](#)
- Building on the success of the warm spaces programme in 2021, a network of **Voluntary, Community and Social Enterprise (VCSE)** providers are delivering a programme of meaningful activities linking people to services to make a lasting difference to the health and wellbeing of our people
- [Links for Life Sunderland - Community Directory](#)

1 One of five values that divide a range of data into five equal parts, each being one fifth (20 percent) of the range

# Sunderland residents' survey

We are committed to listening to people and acting on what they tell us.

**Regular residents' surveys** allow us to understand what is important to you, what you think of the council and the services we provide, and how you feel about the city as a whole

We use the analyses of the responses to understand what action we need to take to better support people who live in Sunderland, and to ensure we are successfully delivering on our **City Plan**.

We use this information to inform how and where we deliver efficient services

[Sunderland Resident Survey Report 2024](#)

## Your local area

We ask a range of questions to find out how you feel about where you live. We use this information to inform how we deliver services.

### Satisfaction with local area



Base: All valid responses (998)

**79%** feel they belong to their local area

**59%** are proud to live in Sunderland

## Feelings of safety in your local area



# Work and Health (Marmot 3)

Having a job that is secure, pays enough, and where we feel supported, helps us feel valued, connected, and in control. This is known as **good work**, and it plays a vital role in keeping us healthy. When people have good work, they are more likely to feel connected and have a sense of purpose - factors that support our physical and mental wellbeing. A good job also provides the money needed to afford essentials like food, housing, and transport - some of the key building blocks of health.

In Sunderland (October 2023–September 2024):

- 75.6% of people aged 16–64 are **employed**, which is almost the same as the UK average (75.7%)
- 3.1% of people aged 16–64 are **unemployed**. This is better than the UK average of 4.6%
- This leaves 22% of people aged 16–64 unable to work for a variety of reasons such as being retired, being a student, looking after family, or being too ill to work. This is only just slightly higher than the UK average of 21.2%
- The average **weekly income** for people in Sunderland is £644. This is 12.8% lower than the North East average of £661 and significantly lower than the England average of £732

The [Sunderland Workplace Health Strategy](#) is ambitious and seeks to:

- Provide good work for all
- Support the needs of the working population
- Create opportunities for greater influence on policy and strategic development
- Use an **evidence-based approach** and to share best practice

# Employment and Education (Marmot 1, 2 and 3)

- **Not in Education, Employment or Training (NEET) -** During 2023–24, 5.0% of those aged 16–17 years were not in education, employment or training. This is a slight 0.2% point rise from the previous year. The North East figure was 5.8% and the England figure 5.4%
- **RQF4 and above -** During 2024, 36.6% of those aged 16–64 were qualified to RQF4 (HND, Degree or Higher Degree or equivalent) or above, a good 8.3% point increase from the previous year. The North East figure was 39.9% and the England figure 47.1%
- During 2023–24, the proportion of economic inactivity<sup>2</sup> in Sunderland was 24.2%. The North East figure was 25.4% and the England figure 21.2%. [Economic inactivity rates and definition](#)
- The percent of sickness absence<sup>3</sup> in Sunderland during 2021–23 (employees who had at least one day off work in the previous week), was 1.7%, this is lower than both the North East 2.4% and England 2.2% average figures

Economic inactivity and unemployment in Sunderland (Health Needs Assessment) - [\(Economic inactivity HNA - Feb 2025.docx\)](#)

<sup>2</sup> Defined as those not classed as employed or unemployed

<sup>3</sup> Source: Office for National Statistics (ONS) 2023

# Poverty and financial wellbeing (Marmot 4)

- Almost 1 in 3 children (14,307 children under 16) are **living in poverty** in Sunderland (29.1%)
- During 2023, 10.9% of Sunderland households were **living in fuel poverty**<sup>4</sup> (low income, low energy efficiency); this is approximately 13,817 households and is lower than the England average of 11.4% of households. This is an improvement in Sunderland from 13.8% in the previous year
- Around 21.7% of **older people** (aged 60+) were **living in poverty** during 2019<sup>5</sup>, this is approximately 14,833 people. This is significantly higher than the England average of 14.2%. Sunderland is ranked 6th highest in the North East (18.6%) for older people living in poverty (IDAOPi)
- Average gross **weekly full-time earnings** increased 10% in Sunderland from £585.20 in 2023 to £643.60 in 2024, this is however still below the North East average of £661.20, and significantly lower than the England average of £732 (source: [ASHE, Annual Survey of Hours and Earnings \(ASHE\) - Office for National Statistics](#))

4 [Fuel Poverty](#)

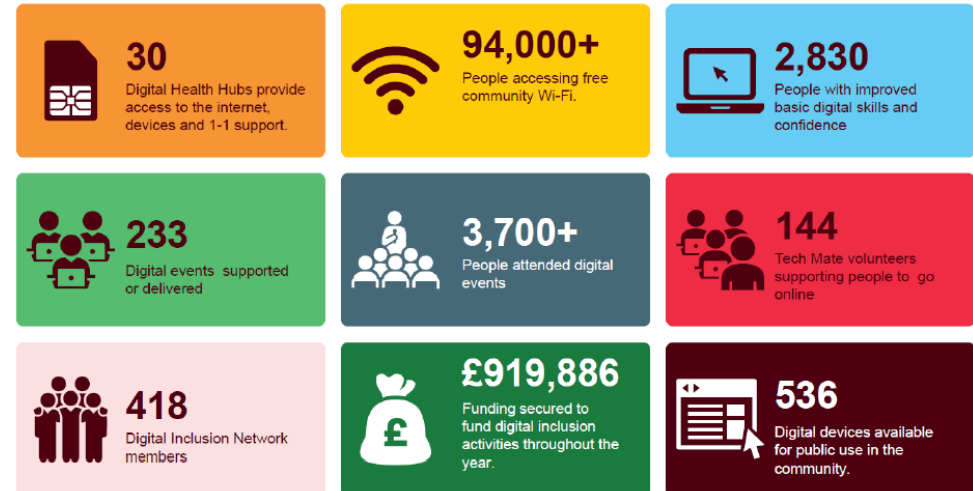
5 Older people in poverty, Income deprivation affecting older people Index (IDAOPi)

# Digital inclusion

- In Sunderland, 13,900 (5%) people have never been online, 77,784 (28%) people have very low digital capacity
- People who go online can usually save up to £250 per month finding better deals
- 90% of jobs are advertised online, potentially digitally excluding those without internet access from the labour market
- School children who have access to a **keyboard device/ internet** at home score 1 or 2 grades higher than those that don't
- Veterans, carers, children and young people, older people, people with disabilities, single parents', asylum seekers, and ethnic minorities **are more likely to be at risk of digital exclusion**
- The risk increases if they are experiencing addiction, abuse, have few or no qualifications, have long term health conditions, live in poverty, are socially isolated, or live in social housing

[Sunderland Digital Inclusion Plan](#)

## Stats delivered during 2023 to 2025



**Sunderland  
City Council**



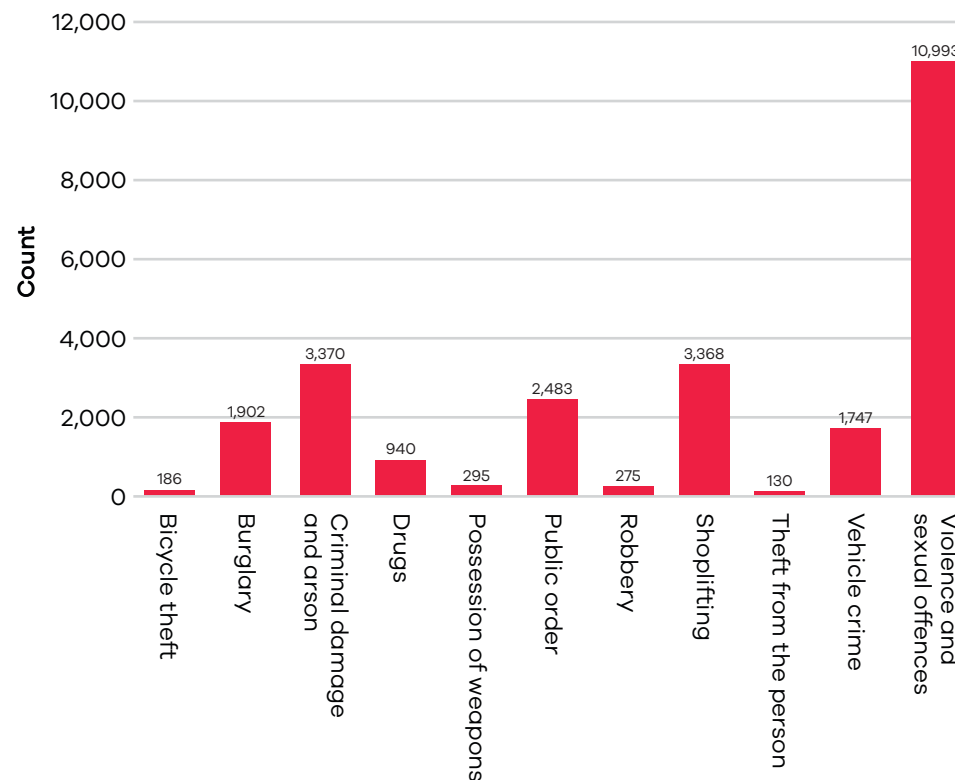
# Recorded crime

- **Total recorded crime** in Sunderland during 2024–25 fell from 107 to 101 per 1,000 people, this is lower than the North East (109) although still higher than the England rate (87)
- Hendon, St Michael’s and Ryhope have the three highest crime rates in Sunderland
- **Serious crime** has risen from 38.5 to 44 per 1,000; this latest figure is similar to the North East, although higher than England (35)
- **90% of Sunderland people<sup>6</sup>** said they felt safe in their local area during the day, 63% felt safe after dark

## [Crime in Sunderland](#)

## Crime by type

(June 2024–May 2025)



# Domestic abuse

- During 2024–25, there were 8,383 reported **Domestic Abuse (DA)** incidents in Sunderland, this is a 6.2% decrease compared to 2023–24 (8,940 incidents) - (Includes repeat victims)
- Northumbria Force Wide<sup>7</sup>, there has been a 3.9% decrease (-1,636 incidents) in all Domestic Abuse incidents when comparing 2023/24 to 2024/25
- In 2024–25, there were 3,427 DA incidents reported where a **child has been involved** in Sunderland
- Force wide there has been an overall year-to-date (YTD) reduction in Domestic Abuse incidents where a child has been involved (-5.3%, -967 incidents). Five LA areas follow this trend, with the biggest reduction seen in Sunderland (-10.7%, -410 incidents)
- In 2024–25 in Sunderland, there were 3,570 reported incidents of **female victims**, and 1,377 **male victims** (Excludes repeat victims)
- Force wide, there has been a YTD reduction in the volume of Female victims (-2.3%, -385 victims) and an increase in the volume of Male victims (+0.3%, +22 victims) when comparing 2023/24 to 2024/25. The second largest reduction of male victims across the five Local Authority areas was seen in Sunderland (-4.6%, -66 victims)
- The percentage of **repeat victims**<sup>8</sup> has reduced by 0.4% force wide when comparing YTD 2023–24 to 2024–25. Sunderland remains unchanged at 41%
- Force wide, there has been a 9.6% reduction in DA related **Stalking offences** YTD (-400 offences) when comparing 2023–24 to 2024–25, the largest reduction being in Sunderland (-16.8%, -158 offences)
- In 2024–25 in Sunderland, there were 1,712 **Mental Health related Domestic Abuse incidents** reported (+2.5% compared to 2023–24)
- Force wide, there has been a 4% increase in the volume of victims aged 16–17 years YTD (+21 victims) when comparing 2023–24 to 2024–25. The largest increase reported in Sunderland (+12%, +11 victims)

## Getting help for domestic violence and abuse - NHS

Sunderland's Domestic Abuse team is committed to continually reinforcing its partnerships across Sunderland by:

- Working with minority communities such as BAME, LGBTQ+ exploring better ways to promote services across Sunderland, encouraging an equitable offer, and a whole systems approach, to ensure individual support needs are being best met across the city and any gaps in provisions can be identified
- The **Sunderland Domestic Abuse Team** is committed to working collaboratively with **Survivor Forums** across the city to ensure that the voices of survivors are meaningfully represented in service planning and delivery, and that the support provided is both robust and responsive to their diverse needs

<sup>7</sup> Northumbria Police Force

<sup>8</sup> Repeat Victims - the incidents in the period that have had at least one further incident in the 12 months prior

- The team is also working closely with **Together for Children (TfC)**, to explore what provision is currently in place across schools, the aim, to highlight early prevention and the importance of healthy relationships
- On the 22nd May 2025, Sunderland launched its new **Strategy for Domestic Abuse & Violence Against Women and Girls** – [No More](#)

# Substance use and alcohol

- **Alcohol-specific mortality** in Sunderland decreased in 2024, down from 31.4 deaths per 100,000 population in 2023, to 25.4. This means Sunderland has the 7th highest rate in England, where the average is 13.8. The Sunderland rate equates to 73 people losing their lives to alcohol in 2024.
- The estimated rate of **opiate and/or crack use** in Sunderland (aged 15–64, using 2019/20 data), was 12.9 per 1,000 population, this is higher than the estimated England rate of 9.5, although lower than the North East rate of 13.4. Current levels of unmet treatment need amongst users are estimated at 58.5%
- During March 2024 to April 2025, 2,291 Sunderland adults were engaged in **drug and alcohol treatments** (797 which were for alcohol only) which is an increase of 194 on the previous year
- Prevalence estimates of alcohol dependency in 2019–20 suggest there were 22.8 per 1,000 population in Sunderland requiring specialist alcohol treatment. This is higher than both the North East (17.8) and England averages (13.8)
- During 2024–25, alcohol users in Sunderland had an estimated **unmet need** of 76.9% - a reduction of 3.1% from the previous year and lower than the England national level of 80.9%. [Unmet need](#)
- Substantial **Drug and Alcohol Treatment and Recovery Improvement Grant (DATRIG)** funding has been secured for Sunderland for 2025–26 which is supporting nearly 50 job roles and activities aimed at delivering better outcomes for people in Sunderland
- Along with supporting core services such as **Wear Recovery**, DATRIG is funding outreach and liaison roles with smaller voluntary sector groups
- **Sunderland’s alcohol strategy, ‘Calling Time: It’s time to rethink drink’<sup>9</sup>** is progressing well and driving improved links with stakeholders, as demonstrated by Public Health’s now direct intervention in alcohol licence applications, reviews and hearings, and investigations into cumulative alcohol harms
- Alongside the healthy increase in numbers in treatment, the key **Treatment Progress measure** for Sunderland (March 2025) is running at 50% - outperforming national and regional rates
- Similarly, Continuity of Care rates (**prison leavers** engaging with drug and alcohol services), for Sunderland at 69% (rolling 3 months to Feb 2025), continue to outperform regional and national rates
- On a broader scale, Sunderland is fully engaged with the regional **Balance group** campaigning for wider change on things like alcohol advertising and minimum unit pricing

The full substance misuse JSNA can be read at: [Substance Misuse JSNA](#)

9 [Time to rethink drink - Sunderland City Council](#)

# Smoking

- **The Tobacco and Vapes Bill** will see the gradual increase in the age of sale so anyone born on or after 1st January 2009 will never be able to legally buy tobacco; there will also be new regulation to limit youth vaping
- The proportion of **adults who smoke in Sunderland** during 2023 was estimated at 12.3%, down from 13.2% the previous year. This downward trend is now only slightly higher than both the North East (11%) and England averages (11.6%). Additional investment in stop smoking services from **Smokefree Generation funding** has already helped to increase the number of smokers accessing services by 46% in 2024/25
- **Smoking prevalence** in adults in routine and manual occupations (aged 18 to 64) was 17.9% in 2023. The North East prevalence was 18% and England 19.5% Sunderland prevalence in this cohort has risen since the 2022 figure of 16.7% despite a good fall from 28.9% in 2020
- The proportion of **adult smokers who had a long-term mental health condition** during 2022–23 was estimated at 20.2%. This is now lower than both the North East (24.4%) and England (25.1%) averages
- Insights from the 2023 Health Related Behaviour Survey<sup>10</sup> (HRBS), show 81% of secondary school pupils reported they had never smoked, compared to 80% in 2021
- The proportion of secondary school pupils who reported they had at least ‘tried’ vaping, increased significantly to 35% compared to 21% in 2021 (HRBS 2023)

The full Tobacco JSNA can be read at: [Tobacco JSNA](#)

<sup>10</sup> The HRB survey is produced biennially by the Schools and Students Health Education Unit (SHEU), a specialist provider of reliable local survey data about young people’s health and wellbeing

# Sexual health

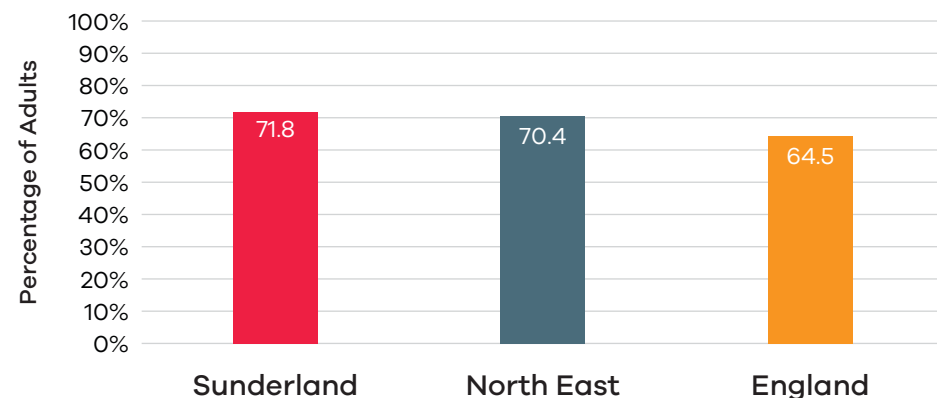
- During 2024, the sexually transmitted infection diagnoses rate for Sunderland rose from 493 to 524 per 100,000, although this is an increase for Sunderland, it is still lower than both the North East (548) and England rates (632)
- The rate of **gonorrhoea diagnoses** was 78 per 100,000, also lower than both the North East (93) and England rates (124). [DHSC - Sexual Health](#)
- During 2023, the **HIV diagnosis rate** per 100,000 for Sunderland was 8.2, this is higher than the North East (5.5) although lower than the England rate (10.4). Respective testing rates were: 1,118, 1,945, and 2,771 per 100,000. Late-stage diagnoses was higher in Sunderland at 57.1% compared to the North East (40.4%) and England (43.5%)  
[DHSC - HIV](#)
- Total prescribed **Long-Acting Reversible Contraception (LARC)** prescription rates were higher in 2023 for Sunderland at 46.4 per 1,000, compared to the North East (42.1) and England rates (43.5). [DHSC - LARC](#)
- Percentage of **conceptions** (all ages) leading to **abortion** in 2022, was slightly higher in Sunderland at 30.2%, compared to the North East (29.6) and England percentage (29.7) [ONS - Conceptions](#)

# Living with obesity

- In the UK, living with obesity is a leading cause of preventable death
- During 2023–24, 32.8% of adults in Sunderland were **living with obesity**, this is higher than the North East (32.5%) and significantly higher than England (26.5%)
- 71.8% of adults in Sunderland were living with either **overweight or obesity** during 2023–24. This is an increase from 65.1% in 2022–23 and is higher than the North East (70.4%), and significantly higher than England (64.5%)
- Obesity is complex, and we know what surrounds us shapes us

A **Healthy Weight Strategy** is currently under development to improve the approach to healthy weight in Sunderland

## Adults (18+) living with overweight or obesity 2023–24



# Physical activity

## Children & Young People

- 44.9% of children and young people (a decrease of 3.9% points) in Sunderland were active during the academic year 2023–24, this was lower than the England average of 47.8%

## Adults 16+

- 61.4% of adults (a decrease of 0.9% points) in Sunderland were physically active in 2023–24 compared to the North East (64.5%) and England (67.4%) averages (figures include gardening activity)
- In 2023–24, Sunderland had 27.8% physically inactive adults compared to the North East (24.9%) and England (22.0%) averages (figures include gardening activity)

Source: OHID, based on Sport England data

# Gambling

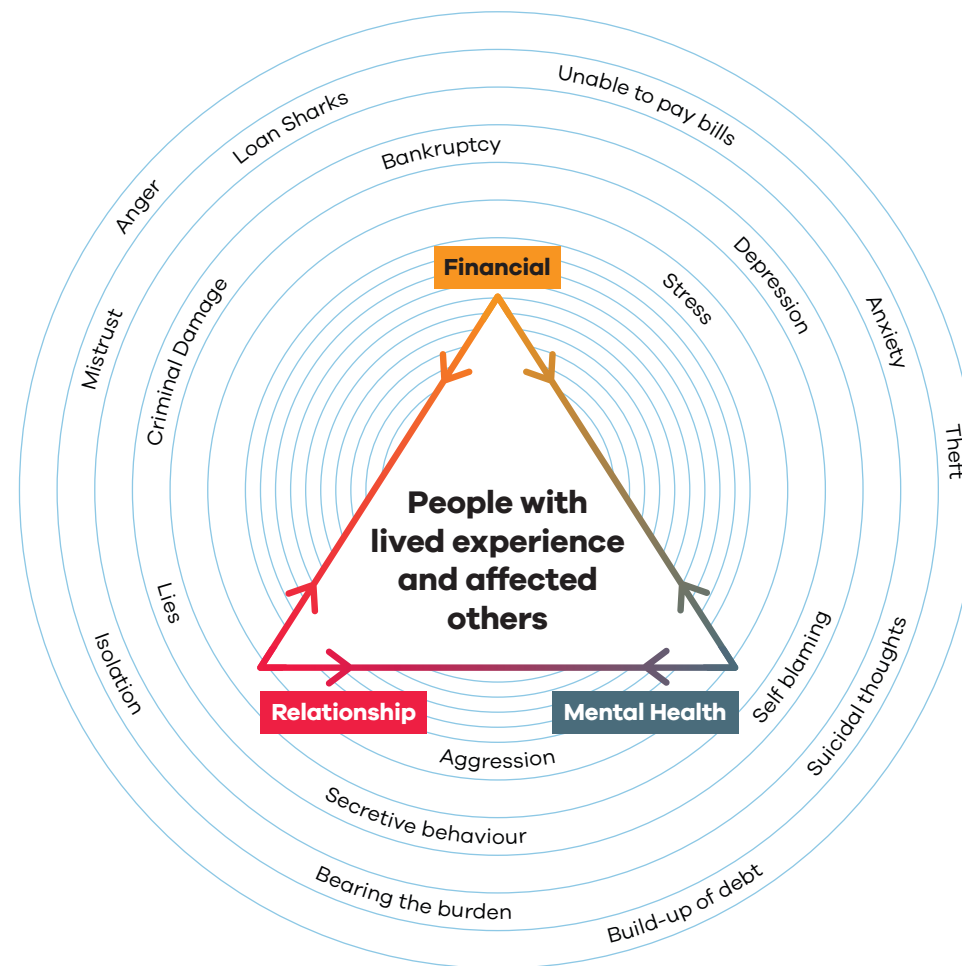
**Gambling** is staking money, or something else of value on the outcome of something involving chance. Any type of repetitive gambling that disrupts or damages personal, family, or work life is considered as gambling at a harmful level.

Gambling can take many place and forms including:

- Arcades, betting (online, at an event or in a bookmakers), lotteries (raffles, tombolas, sweepstakes), bingo, casinos and gambling machines
- The Sunderland Gambling Prevention Network was formed in June 2024 to lead on the work to prevent gambling related harm in collaboration with key partners and stakeholders across the city

For further information please read the Gambling Insights Report at: [Insights Report](#)

## Primary gambling-related harms



Based on the research, 12 recommendations were developed across three themes

- **Raise awareness** of gambling related harms
- **Improve support** for those impacted
- **Improve policy approach** to gambling and its harms

- **Key harms relate to:** mental health, finances, relationships, reduced performance at work, and in some cases criminal behaviour. Around 5% of suicides in this country are thought to be linked to gambling - that is over 400 people per year
- Precise Sunderland-level data is not available for gambling prevalence; however, data provided nationally has been utilised to calculate estimates. In the North East it is estimated that 4.9% of the population (aged 16+) are at risk from gambling. Nationally this is estimated to be 0.5%
- Nationally, 7% of the population of Great Britain (adults and children) were found to be negatively affected by someone else’s gambling
- **Gambling premises per 100,000 population in Sunderland** are around 20.6, this is higher than the North East (18), and significantly higher than England (12.9)  
[Wider Determinants of Health - Gambling](#)

For further information please read the Gambling Health Needs Assessment at: [Gambling HNA](#)

Type	Estimated number of individuals - Sunderland
‘Problem’ gambling	1,130 (aged 16+) around 0.5%
‘At risk’ from gambling	11,083 (aged 16+) around 5%
Affected others	19,194 (all ages) around 8%

# Cancer

- **Death rates** from all cancers have decreased significantly over the last two decades due to a combination of early detection and improved treatments. However, within Sunderland, cancer remains a significant cause of premature death and of health inequality
- The under 75 mortality rate from '**cancer considered preventable**' during 2021-2023 in Sunderland was 63.7 per 100,000, this is higher than the North East (60.3) and significantly higher than the England (49.5) averages (The male rate in Sunderland at 77.3 is higher than the female rate at 50.9) DHSC - Cancer Types
- The under 75 mortality rate from **lung cancer** during 2021–2023 in Sunderland was 35.2 per 100,000, this is higher than the North East (33.6) and significantly higher than the England (25.3) averages
- The gap between Sunderland and England for the under 75 mortality rate from 'cancer considered preventable' is 29% higher in Sunderland

# Long term conditions

- Data during 2023–24, shows a higher recorded prevalence of **long-term conditions** in Sunderland (compared to England) of: coronary heart disease, stroke, hypertension, atrial fibrillation, diabetes, chronic kidney disease, and chronic obstructive pulmonary disease

# Disability

- 22.5% of people in Sunderland have a **long-term health condition or disability**, the North East figure is 21.2% and the England figure 17.7% (Census 2021)
- The **learning disabilities** recorded prevalence in 2023/24 for Sunderland was 1.0%, this is slightly higher than both the North East (0.8%) and England (0.6%) averages
- The **Sunderland health promotion team**, is a small team of support workers supporting people with any learning disabilities. The team offers a wide variety of health access related services to combat any issues, and to ensure equity to all health services. This helps to ensure those with a disability have a reasonably adjusted service tailored especially to meet their individual and unique needs. [Health Promotion Team, Learning Disability Service](#)

# Mental health and wellbeing

- The **suicide rate** in Sunderland for the pooled 3-year period 2021–23 was 13.0 per 100,000 population, slightly lower than the North East rate (13.8), however, higher than the England rate (10.7). The suicide rate in Sunderland has reduced slightly from the two previous periods: 14.0 in 2020–22 and 14.3 in 2019–21
- The suicide rate in **males** in Sunderland during 2021–23 was 23.1 per 100,000, this is higher than the North East rate (22.2) and significantly higher than the England rate (16.4). The suicide rate in men in Sunderland is almost seven times higher than in women
- The suicide rate in **females** in Sunderland during 2021–23 was 3.4 per 100,000, this is lower than both the North East (6.0) and England (5.4) rates. [DHSC - Suicide](#)
- In 2023–24, 2.2% of adults in Sunderland were newly diagnosed with **depression** - (an increase from 1.7% in 2022–23), this is higher than the England average of 1.5%
- During 2023–24, 97% of people referred to **NHS Talking Therapies** in Sunderland received their first treatment appointment within six weeks. [Sunderland Talking Therapies - For anxiety and depression](#)
- In Q4 2023–24, 71% of people of all ages referred to NHS-funded **community mental health services** started treatment within two weeks
- In 2023–24, the rate of **hospital admissions for mental health conditions** among under 18-year-olds in Sunderland was 62.9 per 100,000, this is lower than both the North East (88.7) and England rates (80.2)
- In 2023–24, the rate of hospital admissions due to **self-harm** among 10–24-year-olds in Sunderland was 353.9 per 100,000, this is lower than the North East (397) but significantly higher than the England rate (266.6)
- Insights from the 2023 Health Related Behaviour Survey (HRBS), showed 57% of secondary school pupils reported that in general they were 'quite a lot' or 'very much' happy with their life, compared to 50% in 2021
- During 2023–24, 6,580 children and young people under 18 had at least one contact with NHS-funded community mental health services
- The **Sunderland Suicide Prevention Action Group**, has developed an action plan that sets out the direction and priorities for Sunderland's **suicide prevention agenda** for the period 2023–26. This is led by, a multi-agency partnership which aims to reduce the prevalence of suicides in Sunderland
- Mental health, emotional resilience and suicide prevention training programmes ('**A Life Worth Living**') are being delivered to local communities and settings across Sunderland

- In 2024, 331 people received suicide prevention training, while 305 took part in mental health awareness and emotional resilience training
- Sunderland City Council is a signatory of the **Prevention Concordat for Better Mental Health**, sharing a commitment to work as a whole system to promote good mental wellbeing and prevent mental ill health through joined-up, preventative approaches. [Concordat for Better Mental Health](#)

The full JSNA can be read at: [Adult Public Mental Health and Wellbeing JSNA](#)

# Living well summary

- **Good quality** housing and employment, strong communities, low crime rates, and access to support when we need it, are all building blocks that allow us to live healthy, happy lives
- **However**, for too many people, particularly in the poorest parts of the city, these **building blocks** are crumbling or missing
- **For example**, limited access to secure housing, fulfilling employment, safe outdoor spaces, and nutritious food, mean too many people in the city are living in poor health. Too many lives are being unnecessarily cut short
- This affects not just our own lives, but our families, our communities, and the success of our city; **when we aren't well, we can't work, care, or thrive**
- People in the poorest parts of the city are dying 11 years earlier than those in wealthier areas - and are likely to live more years in poor health
- When people have poor mental wellbeing, this impacts on their physical health too
- The cost-of-living crisis is affecting the poorest people most significantly and poverty remains
- Almost 1 in 4 people are economically inactivity due to long-term sickness (24.2%)
- Climate change is impacting some people more than others. For example, low-income households, babies and older people are typically more exposed to climate risks with less ability to adapt

Since the **Healthy City Plan** was launched in 2021, **we've made real progress**:

- Smoking rates have fallen
- Alcohol-related hospital admissions for under-18s have more than halved

However, challenges remain, too many people in Sunderland are still being held back from good health. Right now, in Sunderland:

- Sunderland has the 7th highest rate of alcohol-specific deaths in England
- Has high levels of deprivation, which impacts on healthy life expectancy

# Ageing well summary

- In people aged over 65 with **frailty**, the rate of emergency hospital admissions due to falls was higher in Sunderland (2,336 per 100,000) compared to both the North East (2,122) and England (1,984)
- By 2047, 23.7% of Sunderland's population is estimated to be aged 65 and over
- There are 6,350 people over 50 with **carers allowance** entitlement
- 1 in 4 older people are **digitally excluded** in Sunderland and an estimated 48% of those **aged over 75** state they don't know how to use the internet
- In 2025–26, it is estimated that around two-thirds of people with dementia (aged 65 and over) will have a formal diagnosis
- Dementia prevalence is estimated to be 0.1% for those aged 55–64 years, and 4.2% for those aged 65
- In 2023–24 the rate of adults aged 65 and over whose long-term support needs were met by admission to **residential and nursing care homes** was 976.0 per 100,000 population. This was almost double the national average of 560.1 per 100,000 and higher than the regional average of 710.1
- **Healthy Life Expectancy (HLE) for men** is 55.0 years, lower than both the North East (56.9) and England averages (61.5 years) 2021–23
- **HLE for women** is also lower in Sunderland at 55.6 years, compared to both the England average (61.9) and North East (57.5) 2021–23

The full Ageing Well JSNA can be read at: [JSNA Ageing Well](#)

# Hearing and sight impairment

- During 2024, 7.9% of people (aged 16+) in Sunderland reported **deafness or hearing loss**, which is above regional (6.7%) and England (5.8%) levels

[GP Patient Survey](#)

[NCHA | Hearing map \(the-ncha.com\)](#)

- On average, a person with **untreated hearing loss** is £2,000 a year worse off than a person with no long-term health issues or disabilities. 40% of people who leave the workforce prematurely cite hearing loss as one of the reasons

<https://www.england.nhs.uk/wp-content/uploads/2017/09/hearing-loss-what-works-guide-employment.pdf>

- During 2022–23, Sunderland had a rate of 764 per 100,000 people (aged 65–74) registered **blind or partially sighted**, this is the highest in the North East and significantly higher than both the England (533) and North East (527) averages
- People with a visual impairment have a higher incidence of **depression**. People with a **visual impairment** are three times more likely to have significant depressive symptoms. 43% seeking help for **sight loss** demonstrate some level of clinically significant depressive symptoms

[Low Vision and Depression](#)

# Older people and poverty

- The 2019 Income deprivation affecting older people index (IDAOPI) shows the proportion of people aged 60+ who experience income deprivation
- 20 of Sunderland’s 25 wards are significantly worse than the England average (coloured red in the chart)
- It is estimated that full pension credit uptake could, over time, reduce pressure on health and social care services, worth approximately £4 billion per year
- Only 3 wards are significantly better than the England average (green in the chart)
- 41.9% of Sunderland’s population is aged 50 and over and more than one in four are aged 60 and over. The cost-of-living crisis and rising energy price challenges mean that many older people are now cutting back on heating their home. The combination of poverty and living in poor-quality homes can mean worsening health and wellbeing

Area	Count	Value	
England	1,179,712	14.2	
Sunderland	14,833	21.7	
Hendon	1,040	42.3	
Redhill	831	33.5	
Southwick	824	32.1	
Castle	799	31.0	
St Anne’s	663	30.2	
Sandhill	835	30.2	
Pallion	761	28.9	
Millfield	580	27.7	
St Chad’s	720	24.1	
Washington North	560	22.7	
Ryhope	608	22.6	
Hetton	656	21.2	
Silksworth	577	20.8	
Doxford	534	20.3	
Houghton	557	18.2	
Shiney Row	494	18.0	
Copt Hill	517	17.9	
St Peter’s	587	17.6	
Barnes	405	15.7	
Washington Central	497	15.5	
Washington West	462	15.1	
Washington East	409	13.8	
Washington South	322	12.8	
St Michael’s	319	12.5	
Fulwell	275	9.1	

# Ageing well summary

- **Good quality housing and employment, strong communities, and access to support** when we need it, are building blocks that allow us to live healthy, happy lives. But for too many people, particularly in the poorest parts of the city, these building blocks are crumbling or missing. For example, limited access to secure housing, fulfilling employment, safe outdoor spaces, and nutritious food, means too many people in the city are spending many of their older years in poor health and some people are dying younger than they should
- **Chronic conditions** such as diabetes, cardiovascular disease and respiratory disease affect more people in Sunderland and at an earlier age compared to the national average
- **Healthy life expectancy** and life expectancy in Sunderland are considerably lower than the national and regional average for both men and women
- **Preventing ill health and reducing health inequalities** throughout life are essential to reduce the amount of time people spend in ill health in their older years
- Reducing falls and reducing levels of **social isolation** remain priority areas
- **Many of our older population live in poverty**, this impacts their ability to age well
- **Older people contribute positively in countless ways** to the Sunderland's rich and vibrant communities, often providing unpaid care for loved ones
- Additional information is available at: [The State of Ageing in Sunderland](#) and the [Director of Public Health Annual Report 2023–24](#)

# Inclusion health

Inclusion health includes population communities that are often **socially excluded**, who typically experience multiple and complex risk factors for poor health, such as poverty, severe mental illness, violence, and trauma

These communities are locally defined and can include:

## People with protected characteristics in the Equality Duty

The nine protected characteristics of:

- Age
- Disability
- Gender reassignment
- Marriage and civil partnership
- Pregnancy and maternity
- Race, religion or belief
- Sex, and
- Sexual orientation

People who may need additional support:

- People with care experience
- People experiencing homelessness or at risk of homelessness
- People with drug and/or alcohol dependence
- Sex workers

- Migrants
- People in contact with the justice system
- Victims of modern slavery
- People who have experienced violence and trauma
- Gypsy, Roma and Traveller communities

People included in **inclusion health communities** tend to have poorer health outcomes, often much worse than the general population, and a lower-than-average age of death.

This is due to a number of factors, including:

- Inclusion health communities are more likely to live in poverty and have poor housing
- are more likely to experience discrimination and violence and less likely to have access to healthcare services
- During 2021–23, those in Sunderland aged under 75 with a **Severe Mental Illness (SMI)** had an excess risk of mortality rate of 393.5% (over those without SMI), the North East figure was 426.8% and the England figure 383.7%. [Severe Mental Illness](#)

The Sunderland rate has fallen year on year from 441.7% since 2018–20

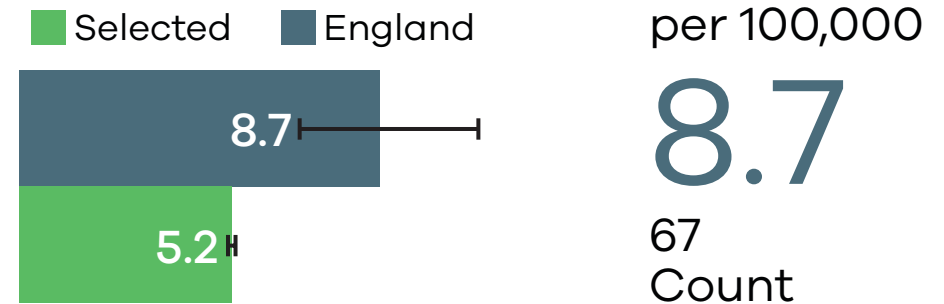
The SPOTLIGHT: Improving Inclusion Health Outcomes toolkit can be read at: [analytics.phe.gov.uk/apps/spotlight](https://analytics.phe.gov.uk/apps/spotlight)

- Some people who may need **extra support** can face mortality rates around 9 times higher than the rest of the population
- Those experiencing **homelessness** are **five times more likely to attend emergency departments** and stay in hospital three times longer
- In Sunderland, an estimated 1,837 households were reported as **homeless** or needed help for settled accommodation

More information is available at: [Homelessness HNA](#)

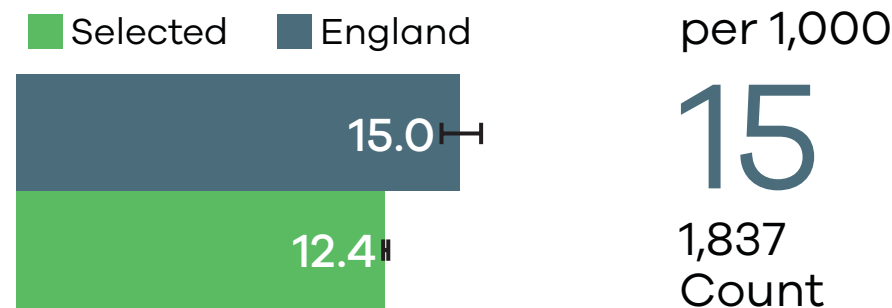
## Deaths from drug misuse

2020–22



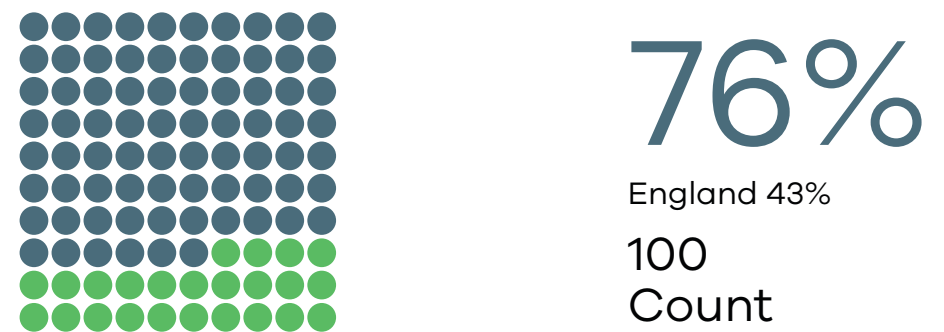
## Homelessness: households owed a duty under the Homelessness Reduction Act

2022–23



## Adults with substance misuse treatment need who successfully engage in community based struc

2022–23



# Migrant health (Marmot 7)

## People migrate to Sunderland for safety, work, study and family:

- Asylum seekers and refugees seek protection from conflict, persecution or human rights abuses
- The skilled workers programme offers employment opportunities
- Higher education has attracted international students
- Family reunification and accompanying relatives remain an important pathway

## Health and wellbeing of migrants are determined by:

- Access to equitable care and ability to navigate health services
- Migration experience, length of stay in the UK and country of origin
- Resources and language barriers

## Migrant health needs

A recent Migrant Health Needs Assessment for Sunderland highlighted the need for reducing health inequalities by:

- Accessible information about local health system and services, and Information and support on how to access services
- Overcoming language and cultural barriers
- Equitable services that address specific needs

- Recording of ethnicity and monitoring data in health and social care
- Development of local workforce to be culturally aware, confident in using interpreting services and representative of local migrant communities
- Working more closely with VCSE organisations supporting Black, Asian, and Minority Ethnicity (BAME) communities

# Health Protection

- Population vaccination coverage for **Dtap IPV Hib HepB** at 1 year in 2023/24 was 96.9%, the second highest uptake by area in England, with the England average at 91.2% and the North East at 95.2%
- Population **vaccination coverage** for one dose of **MMR** at 2 years was 94.7%, higher than the England average of 88.9%. The coverage of two doses of **MMR** at 5 years was 90.9%, higher than the England average of 83.9%. Both indicators are below the recommended threshold of 95% to achieve population level herd immunity
- Although uptake of **most childhood immunisations remains high**, there is variation in uptake with lower uptake seen in more deprived populations and ethnic minority groups
- Population coverage of **influenza vaccination** uptake in those aged 65 and over was 78.0%, similar to England average of 77.8%, but below the North East average of 80.0%
- **Cervical cancer screening** coverage in 2024 for those aged 25–49 was 70.3%, higher than the England average of 66.1% and similar to the North East average of 70.9%
- **Cervical cancer screening** coverage in 2024 for those aged 50–64 was 75.7%, higher than the England average of 74.3% and similar to the North East average of 75.3%
- **Breast cancer screening** coverage in 2024 was 73.2% higher than the England average of 69.9% and the North East average of 72.3%

# Key health challenges identified through this JSNA (Marmot 6)

- Poverty levels within the city continue to have an impact
- Children and young people in the city face significant challenges and inequalities across the social gradient of health
- Smoking, diet, alcohol, substance misuse, and physical inactivity are deeply influenced by the building blocks of health, and lead to poor health outcomes for people in Sunderland
- People in the city have more mental health needs than nationally, this also impacts on physical health
- More people in the city are living with, and prematurely dying from, serious disease than elsewhere in the country
- The ageing population (50+) can have a significant effect on local services. This age group does however contribute very positively in countless ways to the city's rich and vibrant communities
- Sunderland has higher levels of health risk than England as a whole. This is directly linked to the building blocks of health and commercial determinants
- Inequalities in the city have a significant impact on health
- Covid-19 has directly and indirectly impacted on life expectancy and is expected to have a significant impact on premature mortality
- The cost-of-living crisis is affecting the people in the poorest parts of Sunderland most significantly
- Responding to health protection threats requires prevention work, rapid identification, and a swift targeted response to complex cases particularly in high-risk places, locations and communities
- The wider impacts of climate change and levels of carbon in our atmosphere impact significantly on the local environment and on mental and physical health

# Where to find out more



**Sunderland  
Healthy City  
Plan 2020-2035**  
(Refreshed July 2025)

**Sunderland  
City Council**

Our strategy to improve health and reduce  
inequalities, ensuring no one is left behind  
**Sunderland Health and Wellbeing Board**

## Key sources of data and links to find more information:

- [Sunderland Healthy City Plan 2020–2035 \(July 2025 Refresh\)](#)
- [Sunderland Joint Strategic Needs Assessment - Sunderland City Council](#)
- [Sunderland Data Observatory](#)
- [Public health profiles - OHID \(phe.org.uk\)](#)
- [NHS Digital](#)
- [Office for National Statistics \(ons.gov.uk\)](#)
- [Census 2021](#)

**Sunderland  
City Council**

oce23707



**North East and  
North Cumbria**