



Council Tax 2024–2025

How much you pay and how it's spent



**Sunderland
City Council**

Your Council Tax Bill

2023–2024 was another challenging year for Sunderland as national circumstances and recent global events had a continued impact.

So, as your council, working with communities, businesses and partners, we have delivered the best services possible for Sunderland and all its residents, with progress in the past year including:

- Creating a network of Community Digital Health Hubs across Sunderland
- Opening Elemore Park café and gardens and securing further investment in the park
- Building on projects in Southwick and Hetton, launching the city centre SAIL project to tackle anti-social behaviour and perceptions of crime
- Opening Sunderland Station's new southern entrance
- Opening the 650+ space Riverside Multi-Storey Car Park
- Announcing proposals for the International Advanced Manufacturing Strategic Site; and
- Nissan's announcement that it will build further models in Sunderland

Our focus remains on ensuring that, alongside our partners, we're ambitious for the city, we're working on the right things and we're securing investment to create a connected, international city with opportunities for all.

Over the next two years, further plans and projects include:

- Delivering gigabit fibre connectivity to over 95% of premises and the ongoing expansion of wi-fi and 5G networks
- Launching the Sunderland Advanced Mobility Shuttle Project to trial three self-driving zero-emission buses
- Delivering three electric vehicle rapid-charging hubs in Washington, the Coalfields and the seafront
- Working with partners to deliver the Housing Innovation and Construction Skills Academy, Culture House, new eye

hospital, and the Stables leisure and events venue

- Opening the Maker and Faber office developments at Riverside Sunderland, and the pedestrian/cycleway bridge
- Working on the Crown Works Studios proposals to develop a world-class film and high-end TV production facility
- Opening a new Family Hub in Hendon, the latest in a network of five, providing support to children and families
- Hosting the Women's Rugby World Cup 2025 Opening Ceremony
- Delivering the Expo Sunderland programme including the Homes and Gardens visitor attraction in 2025

Whilst we are working hard to deliver essential, everyday services and to create opportunities for our residents, we are doing so in the context of ongoing and increasing financial pressures. Local government continues to be underfunded by Government, with budget cuts since 2010 placing councils under considerable strain.

This means that for 2024–2025, we have had to make further budget cuts of £6.9m and use £9m of reserves to balance the budget. It is against this backdrop that unfortunately, we are left with no alternative other than to raise council tax by 4.99%.

As we move through the year, there is no doubt that existing challenges will remain, and others may emerge. But we remain focused on driving the city's ongoing transformation into a great place to live, work, achieve and play and where people are proud to belong.



Cllr Graeme Miller
Leader of
Sunderland City Council



Patrick Melia
Chief Executive
Sunderland City Council

What you will pay

The amount of council tax you pay depends on the value of your home. More expensive properties pay more council tax. Each home is placed in a valuation band based on what your home was valued at in 1991. This table sets out the council tax levels for 2024–2025 for each valuation band.

Your council tax bill includes charges for levies and precepts which the council is legally required to collect on behalf of other organisations. Charges for levies are included within the City Council Tax Level shown in column 2. Precepts from the Tyne and Wear Fire and Rescue Authority and the Police and Crime Commissioner for Northumbria are shown in columns 3 and 4.

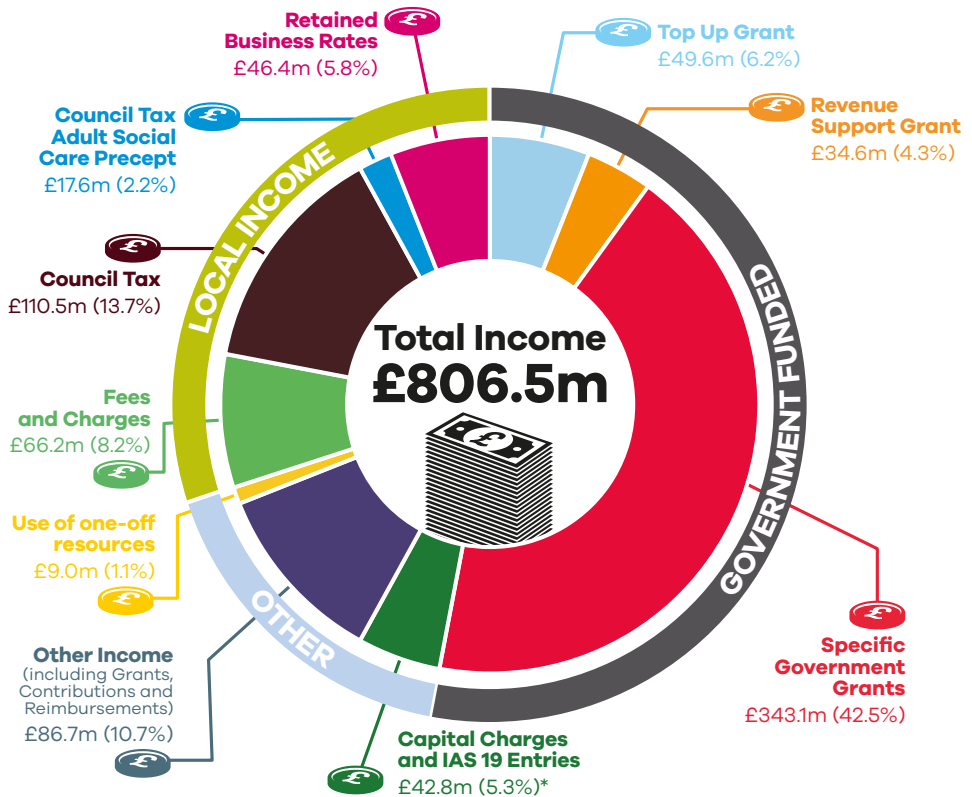
Your council tax bill states the band that applies to your property. Residents in most of Sunderland will pay the Total Council Tax Level in column 5. Residents of Hetton will pay the Total Council Tax Level in column 7.

1	2	3	4	5	6	7
Valuation Band	City Council Tax Level £ p	Tyne and Wear Fire and Rescue Authority Tax Level £ p	Police and Crime Commissioner for Northumbria Tax Level £ p	Total Council Tax Level £ p	Hetton residents only	
					Hetton Town Council Tax Level £ p	Total Council Tax Level £ p
					A	1,145.87
B	1,336.85	73.97	141.43	1,552.25	11.47	1,563.72
C	1,527.83	84.54	161.64	1,774.01	13.11	1,787.12
D	1,718.81	95.11	181.84	1,995.76	14.75	2,010.51
E	2,100.77	116.25	222.25	2,439.27	18.03	2,457.30
F	2,482.73	137.38	262.66	2,882.77	21.30	2,904.07
G	2,864.68	158.52	303.07	3,326.27	24.59	3,350.86
H	3,437.62	190.22	363.68	3,991.52	29.50	4,021.02

Where the council's money will come from in 2024–2025

The council delivers a wide range of services including schools, caring for the elderly, and waste collection. The cost of running and maintaining the day-to-day services provided by the council is called Revenue Expenditure.

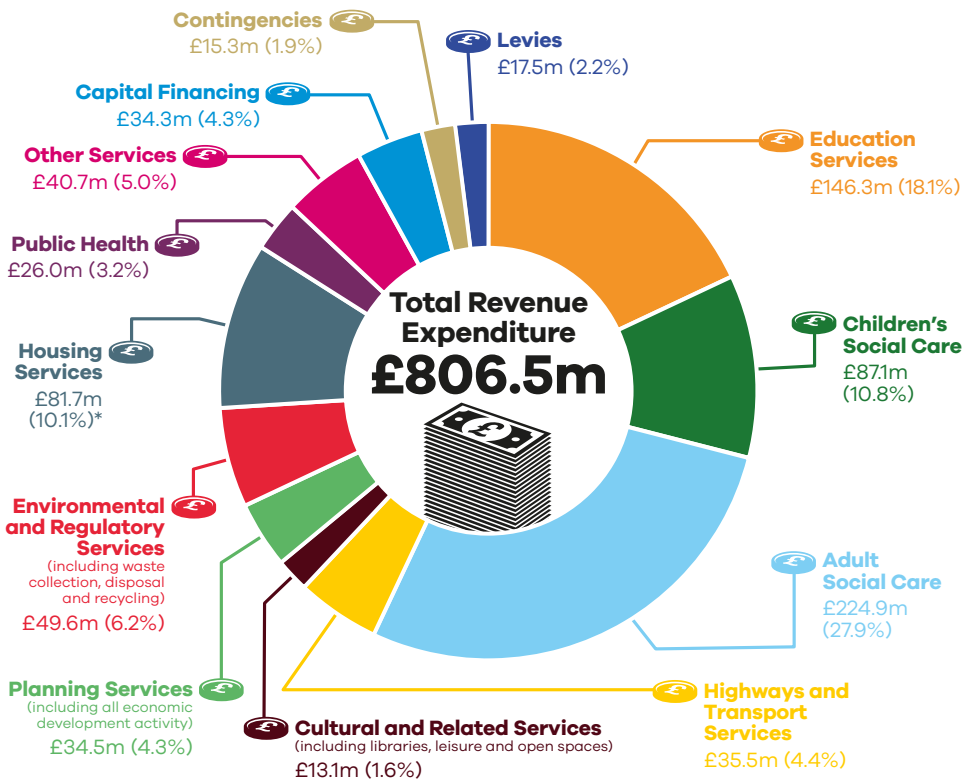
The council tax you pay forms only part of the funding to pay for these services. The chart below shows that over half of the council's income comes from grants from the Government and the remainder comes from council tax, Retained Business Rates, and users of council services.



* Capital charges and IAS19 amounting to £42.8m are included in gross expenditure and income in accordance with the Service Reporting Code of Practice. This has no impact on the level of council tax.

How the council's money will be spent in 2024–2025

The chart below shows what the council plans to spend on its services in 2024–2025. Total or gross expenditure is the total revenue costs of running council services before any income from grants, fees and charges are taken into account.



* This expenditure mainly relates to Housing Benefit payments, funded by a specific government grant.

Adult Social Care funding and council budget consultation

The Secretary of State made an offer to adult social care authorities. (“Adult social care authorities” are local authorities which have functions under Part 1 of the Care Act 2014, namely county councils in England, district councils for an area in England for which there is no county council, London borough councils, the Common Council of the City of London and the Council of the Isles of Scilly.)

The offer enabled an adult social care authority to charge an additional “precept” on its council tax without holding a referendum, to assist the authority in meeting its expenditure on adult social care from the financial year 2016–17.

It was originally made in respect of the financial years up to and including 2019–20 and the Secretary of State has renewed this offer in subsequent years.

In respect of 2024–2025 the council has elected to increase its adult social care precept by 2%.

The total council tax raised for 2024–2025 now includes the cumulative impact of a 2% social care precept raised from 2016–2017, 3% raised from 2017–2018, 2% raised from 2018–2019, 1% raised from 2019–2020, 2% raised from 2020–2021, 3% raised from 2021–2022, 1% raised from 2022–2023, 1% raised from 2023–2024 and 2% raised from 2024–2025.

The additional £17.6m raised in 2024–2025 will help to meet expenditure on adult social care.

BUDGET CONSULTATION

A budget consultation took place between December 2023 and January 2024, seeking views on the budget savings proposals and the level of council tax increase for 2024–2025. The responses received during the consultation, and feedback from residents have been used to inform the budget proposals for 2024–2025. For 2024–2025 it is proposed to increase core council tax by 2.99% and to increase the social care precept by 2%, resulting in a combined increase of 4.99% i.e., within the 5% referendum limit permitted by the Government.



The cost of delivering services 2024–2025

The budget for the next financial year has been prepared taking account of spending pressures and commitments associated with the provision of council services.

The cost of services

In addition to services provided by the council, other bodies including the Police and Crime Commissioner for Northumbria and the Tyne and Wear Fire and Rescue Authority also provide services which the council must take into account.

This table provides a summary of the net cost of these services for 2024–2025 and how the Band D Council Tax is built up.

Last Year 2023-2024 £m	Summary net cost of services	This Year 2024-2025 £m	Band D Council Tax £ p
120.523	City Council (including Levies)	128.024	1,718.81
6.799	Tyne and Wear Fire and Rescue Authority	7.084	95.11
12.430	Police and Crime Commissioner for Northumbria	13.544	181.84
139.752	Total	148.652	1,995.76
0.061	Hetton Town Council	0.063	14.75
139.813	Total (Hetton residents only)	148.715	2,010.51

Cost per head of population

The table below shows the total cost to each person in Sunderland of services provided by the council and Precepting Authorities, after taking account of the income received from Revenue Support Grant and Retained Business Rates.

	Total Net Budget Requirement £	Government Funding* £	Retained Business Rates £	Collection Fund (Surplus)/Deficit £	Council Tax Requirement £
City Council	941.08	(307.14)	(169.21)	2.15	466.88
Tyne and Wear Fire and Rescue Authority	56.12	(23.84)	(6.14)	(0.66)	25.48
Police and Crime Commissioner for Northumbria	261.13	(208.20)	0.00	(0.63)	52.30
Total	1,258.33	(539.18)	(175.35)	0.86	544.66

* Reflects Revenue Support Grant and Top Up Grant

Budget information

SUNDERLAND CITY COUNCIL BUDGET INFORMATION

The council needs to collect £7.5m more from council tax payers in 2024–2025 than it did in 2023–2024. This is because the increase in government funding is insufficient to meet increasing spending pressures. The remaining pressure has again been funded by using reserves. Details are shown in the table opposite.

	£m
Net Funding Changes	(15.6)
Spending pressures and additional investment	28.5
Planned budget savings	(6.9)
Business Rates/Collection Fund impact	1.5
Change in use of Reserves	0.0
Total	7.5

Last Year 2023–2024				This Year 2024–2025			
Gross Expenditure £m	Gross Income £m	Net Expenditure £m		Gross Expenditure £m	Gross Income £m	Net Expenditure £m	
201.1	81.7	119.4	Adult Social Care	224.9	92.2	132.7	
78.0	9.8	68.2	Children's Social Care	87.1	11.0	76.1	
136.6	114.3	22.3	Education Services	146.3	131.8	14.5	
13.5	1.6	11.9	Cultural and Related Services	13.1	1.6	11.5	
49.5	8.0	41.5	Environmental and Regulatory Services	49.6	8.4	41.2	
33.0	7.5	25.5	Highways and Transport Services	35.5	7.9	27.6	
79.3	75.3	4.0	Housing Services (mainly Housing Benefit payments)	81.7	77.8	3.9	
31.1	18.1	13.0	Planning Services	34.5	25.0	9.5	
25.2	25.2	0.0	Public Health	26.0	26.0	0.0	
46.5	16.2	30.3	Other Services	40.7	16.5	24.2	
0.0	81.7	(81.7)	Other Core Grants	0.0	96.1	(96.1)	
28.7	0.0	28.7	Capital Financing Costs	34.3	0.0	34.3	
722.5	439.4	283.1		773.7	494.3	279.4	
20.4	0.0	20.4	Provision for contingencies and strategic priorities	15.3	0.0	15.3	
0.0	1.8	(1.8)	Interest on Balances	0.0	2.3	(2.3)	
0.0	9.0	(9.0)	Movement on Reserves	0.0	9.0	(9.0)	
0.0	62.0	(62.0)	Capital Charges and IAS19 entries	0.0	42.8	(42.8)	
742.9	512.2	230.7	TOTAL EXPENDITURE	789.0	548.4	240.6	
			Levies and Precepts				
		16.5	North East Combined Authority			17.1	
		0.2	Environment Agency - Flood Defence			0.2	
		0.1	NE Inshore Fisheries Conservation Authority			0.1	
		0.1	Hetton Town Council			0.1	
		247.6	TOTAL BUDGET REQUIREMENT			258.1	
			Less:				
		32.5	Revenue Support Grant			34.6	
		46.9	Retained Business Rates			46.4	
		47.2	Top Up Grant			49.6	
		0.4	Collection Fund Surplus/(Deficit)			(0.6)	
		120.6	COUNCIL TAX REQUIREMENT			128.1	

Budget information

LEVIES AND PRECEPTS COLLECTED BY THE COUNCIL

Your council tax bill is made up of a number of elements besides the council's council tax requirement. These include levies and precepts that the council is legally required to collect on behalf of other organisations. For Sunderland City Council these organisations are:

Levy: Environment Agency						
Last Year 2023–2024				This Year 2024–2025		
Gross Expenditure £m	Gross Income £m	Net Expenditure £m		Gross Expenditure £m	Gross Income £m	Net Expenditure £m
30.0	27.4	2.6	Flood Defence	35.7	32.9	2.8
		2.6	Levy			2.8
Change in levy between years is attributable to:						£m
Programme of works for both capital and revenue needed by the Regional Flood and Coastal Committee						0.2
						0.2

Sunderland's proportion of the Environment Agency levy is £0.266m in 2024–2025 (2023–2024 £0.254m).

Levy: North East Combined Authority						
Last Year 2023–2024				This Year 2024–2025		
Gross Expenditure £m	Gross Income £m	Net Expenditure £m		Gross Expenditure £m	Gross Income £m	Net Expenditure £m
36.6	36.1	0.5	Tyne Tunnels	39.2	39.2	0.0
4.5		4.5	Transport co-ordination and former ITA	8.2		8.2
106.2		106.2	Grant to Nexus	102.5		102.5
23.3		23.3	Grant to Durham and Northumberland	23.5		23.5
170.6	36.1	134.5		173.4	39.2	134.2
		9.5	less transfer from Reserves			6.1
		125.0	Total Budget Requirement			128.1
			Less			
		(33.8)	Rail Grants and Miscellaneous Grants			(34.3)
		91.2	Levy			93.8
Change in Budget Requirement between years is attributable to:						£m
Inflation and other cost pressures						2.8
Increased income						(3.1)
Movement on contribution from reserves						3.4
						3.1

Sunderland's proportion of the North East Combined Authority levy is £17.077m in 2024–2025 (2023–2024 £16.516m).

Budget information

Precept: Police and Crime Commissioner for Northumbria						
Last Year 2023–2024				This Year 2024–2025		
Gross Expenditure £m	Gross Income £m	Net Expenditure £m		Gross Expenditure £m	Gross Income £m	Net Expenditure £m
388.1	40.6	347.5	Police General	420.5	42.6	377.9
			Less:			
		266.1	Formula Grant			282.0
		3.4	Special Pension Grant			11.1
		6.9	Council Tax Support Grant			6.9
		1.3	Legacy Council Tax Freeze Grant			1.3
		0.9	Constituent Authorities' Net Surplus/(Deficit)			1.3
		68.9	Precept			75.3
Change in Precept between years is attributable to:						£m
Pay Awards, Inflation, recruitment, budget pressures and other budget adjustments						38.9
Budget reductions and efficiencies						(8.5)
Increase in government Formula grant						(15.8)
Increase in Special Pension Grant						(7.8)
Increase in Council Tax Net Surplus						(0.4)
						6.4
This represents £181.84 of the Band D Council Tax and equates to a Council Tax increase of 7.70%.						
Council Tax represents 17.9% of Gross Expenditure (2023–2024 17.8%) this increases the reliance on Council Tax as a funding stream.						
The amount to be collected from Sunderland residents on behalf of the Police and Crime Commissioner for Northumbria is £13.544m in 2024–2025 (£12.430m in 2023–2024).						

Budget information

Precept: Tyne and Wear Fire and Rescue Authority						
Last Year 2023–2024				This Year 2024–2025		
Gross Expenditure £m	Gross Income £m	Net Expenditure £m		Gross Expenditure £m	Gross Income £m	Net Expenditure £m
59.3	5.8	53.5	Fire Service	69.2	6.1	63.1
		53.5				63.1
		4.3	Contingencies			1.5
		(0.6)	Interest on Balances			(1.2)
		57.2	Total Budget Requirement			63.4
			Less:			
		12.2	Revenue Support Grant			13.5
		0.5	Collection Fund Surplus (Deficit)			0.8
		10.2	Top Up Grant			12.7
		3.4	Business Rate Share			3.7
		0.6	Service Delivery Grant			0.1
		2.8	SFA Adjustment			3.2
		0.0	Funding Guarantee Grant			0.7
		27.5	Council Tax Requirement			28.7
Change in Precept between years is attributable to:						£m
Cost Pressures						6.2
Increase in net Government funding						(4.5)
Increase in Business Rates Local Share						(0.3)
Increase in Collection Fund net surplus						(0.2)
						1.2
This represents £95.11 of the Band D Council Tax and equates to a Council Tax increase of 2.99%. Council tax represents 40.6% of Gross Expenditure (2023–2024 43.3%) this reduces the reliance on Council Tax as a funding stream.						

The amount to be collected from Sunderland residents on behalf of the Tyne and Wear Fire and Rescue Authority precept is £7.084m in 2024–2025 (£6.799m in 2023–2024).



Do it online...

- Set up a council tax Direct Debit or make a payment
- Report a change in address
- Report a Housing Benefit/ Council Tax Support change in circumstance
- Report missed refuse collections or damaged/missing bins
- Report a damaged drain gully, manhole, road, pavement or surface
- Arrange a bulky waste collection
- Report fly tipping
- Request a copy of a birth, death or marriage certificate
- Arrange a pest control appointment
- Book an appointment to register a birth or death
- Book an appointment to give notice of a marriage or civil partnership
- Report animal fouling
- Request maintenance of grass, trees, shrubs, hedges and weeds
- Sign up to garden waste collections
- Report anti-social behaviour and hate crimes
- Report an issue with street lighting

...and much more at www.sunderland.gov.uk

More than **seven out of ten** households in Sunderland pay their council tax by Direct Debit because it's the easiest way.

Why don't you join them?



**Sunderland
City Council**