

Foreward

ASBESTOS SURVEY REPORT FOR BLOCK 1A – 1C EDWARD THOMPSON SITE, RICHMOND STREET, SUNDERLAND, SR5 1BQ

I have enclosed for your information and retention the most recent asbestos survey (Management) which applies to the property stated above. The purpose of the survey is to identify as far as possible, the materials containing asbestos fibres in your property.

The attached report is divided in sections so as to give as much information as possible, a basic reference section for use by premises managers and a more detailed report for use by contractors on site etc.

Plan of the Building and Sample Locations

This contains a plan of the building and identifies where asbestos samples have been taken from.

Photographs of Areas Sampled

This section contains photographs of all the areas where samples were taken. These photographs can be used when carrying out the periodic inspections to see if there has been any change or deterioration in its condition.

Survey Information

This section contains the survey information as printed from the central database held at Land and Property. It describes the type of asbestos present, its location, condition etc. Contractors should be shown this section along with the others when they are shown the register prior to starting any work.

Priority Risk Assessments

This section contains assessments which have been created using information from the survey and information on your property. This assessment helps to determine how often periodic checks on any asbestos need to be carried out by your Samo.

5 Simple Steps to Asbestos Management

This section details procedures for managing asbestos in your property. It gives guidance on the register, the inspections, any planned work and what to do when contractors arrive on site.

Commonly asked Questions

This section covers questions most commonly asked and can be referred to as/when the need arises.

The building has been surveyed as comprehensively as possible, all potentially fibrous materials have been examined and where necessary analysed by competent UKAS accredited analysts and the findings of both recorded in the report.

This report is an important document and must be referred to before any building works are carried out. The report must be kept with your handbook and the checklists completed on a regular basis. You will be reminded when your specific checklists are due for submission.

Information for Employees Working in Premises where Asbestos Containing Materials Exist.

Asbestos is made up of fibrous materials, which are flexible, mechanically strong and resistant to stretching, heat and chemicals. As a consequence asbestos has been used extensively in buildings. Examples of asbestos containing materials found in buildings include exterior asbestos cement cladding; gutters and pipes; fireproof sprays on structural steel joists; insulation boards in service ducts and wall partitions; ceiling and floor tiles and pipe and boiler lagging.

Asbestos containing products can produce very small fibrous dust particles, which can not be seen by the naked eye. It is only when these fibres become airborne, due to damage, deterioration, disturbance etc, that there is a risk to health.

If asbestos is maintained in good condition and is not disturbed or damaged it does not pose a health risk.

The authority has a management system for ensuring that you are not exposed to asbestos containing materials that are in poor condition and may pose a health risk. This system is based on sound principals laid down by legislation and associated codes of practice and guidance.

It is not appropriate simply to remove all asbestos containing materials in buildings. Asbestos materials that are sound, undamaged and not releasing dust should be left alone. Any disturbance to such materials, however carefully controlled, will release fibres and be counter-productive.

Within the building you occupy, your department has nominated a Site Asbestos Monitoring Officer (SAMO). This individual is responsible for inspecting the asbestos containing materials to ensure they are not in a dangerous condition. Should you have any concerns about suspect materials within your premises you should contact the SAMO.

Restrictions on use, distribution and publication of the report

We accept no responsibility or liability for the consequences of this document being used for purpose other than for which it was commissioned.

To the extent that the document is based on the information available at the time of writing, Sunderland City Council accepts no liability for any consequences should this report be used for any other purpose

If you require any further information regarding the report or its application please contact Caroline Bage, Asbestos Manager on Tel: 07557 938966.

Yours sincerely,

Paul Davies
Assistant Director of Business and Property Services

Sunderland
City Council

Sunderland City Council

*Control of Asbestos
Regulations 2012*

Asbestos Register for Block 1A – 1C Edward Thompson Site, Richmond Street, Sunderland, SR5 1BQ



UPRN: - 22-47230

TF Ref:

Location of register:-

Premises Manager / Samo: - Tenant

Date: 26 November 2024

Contact Numbers List: -

Caroline Bage Asbestos Manager – 07557 938966

Contents

	<u>Section</u>
• Plan of building and sample locations	1
• Photographs of areas sampled	2
• Survey information	3
• Asbestos Management Plan, Priority Assessments,	4
• Contacts Form, Code of Practice	4
• 5 Simple Steps of Asbestos Management	5
• Commonly asked questions	6

Appendices

• Form 1 – Visitor Register	7
• Form 2 – Periodic Return Checklist and Schedule	8
• Form 3 – Works Notification Form	9
• Form 4 – Registration of All Disturbances	10
• Form 5 – Training Records	11

Plan of Building and Samples Location

Item No	Sample Ref.	Location		Inspection Frequency
1.	22-47230-1	High level boxing	Second Floor, Room 1 Meeting Room	Medium Risk
2.	22-47230-2	Debris to tops of ceiling tiles	Second Floor, Room 1 Meeting Room	Medium Risk
3.	22-47230-2	Debris to tops of ceiling tiles	Second Floor, Room 1 Meeting Room	Medium Risk
4.	22-47230-3	Sealant to window seals	Second Floor, Room 1 Meeting Room	Low Risk
5.	22-47230-1	High level horizontal boxing	Second Floor, Room 3 office 2	Medium Risk
6.	22-47230-1	Vertical boxing	Second Floor, Room 3 office 2	Medium Risk
7.	22-47230-4	Rope seal to safe door	Second Floor, Room 3 office 2	Low Risk
8.	22-47230-1	High level horizontal boxing	Second Floor, Room 4 Store	Medium Risk
9.	22-47230-1	Vertical boxing	Second Floor, Room 4 Store	Medium Risk
10.	22-47230-1	High level horizontal boxing	Second Floor, Room 5 IT Department	Medium Risk
11.	22-47230-1	Vertical boxing	Second Floor, Room 5 IT Department	Medium Risk
12.	22-47230-1	Vertical boxing	Second Floor, Room 6 IT Dept Store	Medium Risk
13.	22-47230-1	High level horizontal boxing	Second Floor, Room 6 IT Dept Store	Medium Risk
14.	22-47230-2	Debris to tops of ceiling tiles	Second Floor, Room 6 IT Dept Store	Medium Risk
15.	22-47230-1	High level horizontal boxing	Second Floor, Room 7 Corridor	Medium Risk
16.	22-47230-1	High level horizontal boxing	Second Floor, Room 8 Server Room	Medium Risk
17.	22-47230-1	Vertical boxing	Second Floor, Room 8 Server Room	Medium Risk
18.	22-47230-2	Debris to tops of ceiling tiles	Second Floor, Room 8 Server Room	Medium Risk
19.	22-47230-1	Vertical boxing behind wood cladding	Second Floor, Room 9 Sales Office	Medium Risk
20.	22-47230-1	High level horizontal boxing behind wood cladding	Second Floor, Room 9 Sales Office	Medium Risk
21.	22-47230-5	High level horizontal boxing	Second Floor, Room 10 EPS Department	Medium Risk
22.	22-47230-5	High level horizontal boxing	Second Floor, Room 10 EPS Department	Medium Risk

23.	22-47230-6	Infill Panels – upstands to skylight	Second Floor, Room 10 EPS Department	Medium Risk
24.	22-47230-5	High level horizontal boxing	Second Floor, Room 11 Corridor	Medium Risk
25.	22-47230-6	Infill Panels – upstands to skylight	Second Floor, Room 11 Corridor	Medium Risk
26.	22-47230-7	Walls – Firebreak above door	Second Floor, Room 11 Corridor	Medium Risk
27.	22-47230-5	Vertical boxing	Second Floor, Room 12 Wages Office	Medium Risk
28.	22-47230-5	High level horizontal boxing	Second Floor, Room 12 Wages Office	Medium Risk
29.	22-47230-8	Floor	Second Floor, Room 12 Wages Office	Medium Risk
30.	22-47230-5	High level horizontal boxing	Second Floor, Room 13 Petty Cash Office	Medium Risk
31.	22-47230-5	Vertical boxing	Second Floor, Room 13 Petty Cash Office	Medium Risk
32.	22-47230-7	Walls – Firebreak above door	Second Floor, Room 13 Petty Cash Office	Medium Risk
33.	22-47230-5	High level horizontal boxing	Second Floor, Room 14 Office 3	Medium Risk
34.	22-47230-5	High level horizontal boxing	Second Floor, Room 14 Office 3	Medium Risk
35.	22-47230-5	Vertical boxing and panel to boxing	Second Floor, Room 14 Office 3	Medium Risk
36.	22-47230-5	High level horizontal boxing	Second Floor, Room 15 Office 4	Medium Risk
37.	22-47230-6	Infill Panels – upstands to skylight	Second Floor, Room 15 Office 4	Medium Risk
38.	22-47230-7	Walls – Firebreak above door	Second Floor, Room 15 Office 4	Medium Risk
39.	22-47230-7	Ceiling – felt to roof	Second Floor, Room 15 Office 4	No Risk
40.	22-47230-10	Ceiling – Ceiling tiles	Second Floor, Room 16 Male WC & Lobby	Medium Risk
41.	22-47230-5	High level horizontal boxing	Second Floor, Room 16 Male WC & Lobby	Medium Risk
42.	22-47230-6	Infill Panels – upstands to skylight	Second Floor, Room 16 Male WC & Lobby	Medium Risk
43.	22-47230-7	Walls – Firebreak above door	Second Floor, Room 16 Male WC & Lobby	Medium Risk

44.	22-47230-10	Ceiling – Ceiling tiles	Second Floor, Room 17 Female WC & Lobby	Medium Risk
45.	22-47230-5	High level horizontal boxing	Second Floor, Room 17 Female WC & Lobby	Medium Risk
46.	22-47230-6	Infill Panels – upstands to skylight	Second Floor, Room 17 Female WC & Lobby	Medium Risk
47.	22-47230-7	Walls – Firebreak above door	Second Floor, Room 17 Female WC & Lobby	Medium Risk
48.	22-47230-11	Walls – Panels to high level wall	Second Floor, Room 18 Contracts Office	Medium Risk
49.	22-47230-12	Boxing	Second Floor, Room 18 Contracts Office	Medium Risk
50.	22-47230-13	Boxing – Cladding to RSJ's	Second Floor, Room 18 Contracts Office	Medium Risk
51.	22-47230-13	High level horizontal boxing	Second Floor, Room 19 Finance Office	Medium Risk
52.	22-47230-13	High level horizontal boxing	Second Floor, Room 19 Finance Office	Medium Risk
53.	22-47230-13	High level horizontal boxing	Second Floor, Room 19 Finance Office	Medium Risk
54.	22-47230-2	Debris to tops of ceiling tiles	Second Floor, Room 19 Finance Office	Medium Risk
55.	22-47230-6	Infill Panels – upstands to skylight	Second Floor, Room 19 Finance Office	Medium Risk
56.	22-47230-13	High level horizontal boxing	Second Floor, Room 20 Office 5	Medium Risk
57.	22-47230-13	Vertical boxing behind wood cladding	Second Floor, Room 20 Office 5	Medium Risk
58.	22-47230-6	Infill Panels – upstands to skylight	Second Floor, Room 20 Office 5	Medium Risk
59.	22-47230-13	High level horizontal boxing	Second Floor, Room 21 Office 6	Medium Risk
60.	22-47230-13	Vertical boxing	Second Floor, Room 21 Office 6	Medium Risk
61.	22-47230-16	Infill Panels – upstands to skylight	Second Floor, Room 21 Office 6	Medium Risk
62.	22-47230-13	High level horizontal boxing	Second Floor, Room 22 Office 7	Medium Risk
63.	22-47230-13	Vertical boxing	Second Floor, Room 22 Office 7	Medium Risk
64.	22-47230-16	Infill Panels – upstands to	Second Floor, Room 22 Office 7	Medium Risk

		skylight		
65.	22-47230-13	High level horizontal boxing	Second Floor, Room 23 Office 8	Medium Risk
66.	22-47230-13	Vertical boxing	Second Floor, Room 23 Office 8	Medium Risk
67.	22-47230-16	Infill Panels – upstands to skylight	Second Floor, Room 23 Office 8	Medium Risk
68.	22-47230-13	High level horizontal boxing	Second Floor, Room 23 Office 8	Medium Risk
69.	22-47230-16	Infill Panels – upstands to skylight	Second Floor, Room 24 Office 9	Medium Risk
70.	22-47230-13	High level horizontal boxing	Second Floor, Room 24 Office 9	Medium Risk
71.	22-47230-16	Infill Panels – upstands to skylight	Second Floor, Room 25 Finance Room 2	Medium Risk
72.	22-47230-17	Infill Panels – upstands to skylight	Second Floor, Room 26 Main Office	Medium Risk
73.	22-47230-18	Infill Panels – Extractor fan housing within ceiling void	Second Floor, Room 26 Main Office	Medium Risk
74.	22-47230-19	High level horizontal boxing	Second Floor, Room 26 Main Office	Medium Risk
75.	22-47230-19	Vertical boxing over columns & RSJ's	Second Floor, Room 26 Main Office	Medium Risk
76.	22-47230-10	Ceiling tiles	Second Floor, Room 27 Storeroom	Medium Risk
77.	22-47230-12	High level horizontal boxing	Second Floor, Room 27 Storeroom	Medium Risk
78.	22-47230-6	Infill Panels – upstands to skylight	Second Floor, Room 27 Storeroom	Medium Risk
79.	22-47230-19	High level horizontal boxing	Second Floor, Room 28 Canteen	Medium Risk
80.	22-47230-19	Vertical boxing	Second Floor, Room 28 Canteen	Medium Risk
81.	22-47230-25	Walls	Second Floor, Room 29 Main Lobby & Stairs	No Risk
82.	22-47230-27	Infill Panels – upstands to skylight	Second Floor, Room 29 Main Lobby & Stairs	Medium Risk
83.	22-47230-18	Infill Panels – Extractor fan housing within ceiling void	Second Floor, Room 31 Bingo Store	Medium Risk

84.	22-47230-19	High level horizontal boxing	Second Floor, Room 31 Bingo Store	Medium Risk
85.	22-47230-22	Floor	Second Floor, Room 31 Bingo Store	No Risk
86.	22-47230-18	Infill Panels – Extractor fan housing within ceiling void	Second Floor, Room 32 Prom Games Store	Medium Risk
87.	22-47230-19	High level horizontal boxing	Second Floor, Room 32 Prom Games Store	Medium Risk
88.	22-47230-22	Floor	Second Floor, Room 32 Prom Games Store	No Risk
89.	22-47230-18	Infill Panels – Extractor fan housing within ceiling void	Second Floor, Room 34 Frank Cronin Office	Medium Risk
90.	22-47230-23	High level horizontal boxing	Second Floor, Room 34 Frank Cronin Office	Medium Risk
91.	22-47230-28	Walls	Second Floor, Room 34 Frank Cronin Office	No Risk
92.	22-47230-23	High level horizontal boxing	Second Floor, Room 35 Paddy Cronin Office	Medium Risk
93.	22-47230-28	Walls	Second Floor, Room 35 Paddy Cronin Office	No Risk
94.	22-47230-23	High level horizontal boxing	Second Floor, Room 36 WC & Lobby	Medium Risk
95.	22-47230-23	High level horizontal boxing	Second Floor, Room 37 Corridor 3	Medium Risk
96.	22-47230-27	Infill Panels – upstands to skylight	Second Floor, Room 37 Corridor 3	Medium Risk
97.	22-47230-28	Walls	Second Floor, Room 37 Corridor 3	No Risk
98.	22-47230-29	Floor – grey & red tiles to concrete	Second Floor, Room 38 Squash Court Changing Room	Low Risk
99.	22-47230-30	Walls – ceramic tile adhesive	Second Floor, Room 38 Squash Court Changing Room	No Risk
100.	22-47230-29	Floor – grey & red tiles to concrete	Second Floor, Room 39 Squash Court Viewing Area	Low Risk
101.	22-47230-23	High level horizontal boxing	Second Floor, Room 40 Reception	Medium Risk
102.	22-47230-24	Debris to tops to ceiling tiles	Second Floor, Room 40 Reception	Medium Risk
103.	22-47230-25	Walls	Second Floor, Room 41 Cupboard	No Risk
104.	22-47230-26	Walls –	Second Floor, Room	Medium Risk

		Firebreak to top of wall	41 Cupboard	
105.	22-47230-23	High level horizontal boxing	Second Floor, Room 42 Sound Cupboard	Medium Risk
106.	22-47230-25	Walls	Second Floor, Room 42 Sound Cupboard	No Risk
107.	22-47230-26	Walls – Firebreak to top of wall	Second Floor, Room 42 Sound Cupboard	Medium Risk
108.	22-47230-13	Boxing – underside of cladding to RSJ's above & below windows	Second Floor, Room 43 Frank Conin Suite	Medium Risk
109.	22-47230-19	High level horizontal boxing	Second Floor, Room 44 Corridor 4	Medium Risk
110.	22-47230-21	Ceiling	Second Floor, Room 44 Corridor 4	No Risk
111.	22-47230-23	High level horizontal boxing	Second Floor, Room 45 Key Cupboard	Medium Risk
112.	22-47230-31	Ceiling tiles	Second Floor, Room 46 Fire Exit Stairwell 1	Medium Risk
113.	22-47230-32	Infill Panels – Upstands to skylights	Second Floor, Room 46 Fire Exit Stairwell 1	Medium Risk
114.	22-47230-33	Floor – Stair Nosings	Second Floor, Room 46 Fire Exit Stairwell 1	Low Risk
115.	22-47230-34	High level horizontal boxing	Second Floor, Room 47 Comms Room	Medium Risk
116.	22-47230-34	Vertical boxing	Second Floor, Room 47 Comms Room	Medium Risk
117.	22-47230-34	Window – Fillet to window reveal behind cladded RSJ	Second Floor, Room 47 Comms Room	Medium Risk
118.	22-47230-35	Debris to top of ceiling tiles	Second Floor, Room 47 Comms Room	Medium Risk
119.	22-47230-34	Window – Fillet to window reveal behind cladded RSJ	Second Floor, Room 48 First Aid Room	Medium Risk
120.	22-47230-34	High level horizontal boxing	Second Floor, Room 48 First Aid Room	Medium Risk
121.	22-47230-36	Vertical boxing	Second Floor, Room 48 First Aid Room	Medium Risk
122.	22-47230-37	Downpipes – filling to pipe flange knuckle	Second Floor, Room 48 First Aid Room	No Risk
123.	22-47230-31	Ceiling tiles	Second Floor, Room 49 Corridor 5	Medium Risk
124.	22-47230-32	Infill panels –	Second Floor, Room	Medium Risk

		upstands to skylights	49 Corridor 5	
125.	22-47230-34	High level horizontal boxing	Second Floor, Room 49 Corridor 5	Medium Risk
126.	22-47230-31	Ceiling tiles	Second Floor, Room 50 Corridor 6	Medium Risk
127.	22-47230-32	Infill panels – upstands to skylights	Second Floor, Room 50 Corridor 6	Medium Risk
128.	22-47230-34	High level horizontal boxing	Second Floor, Room 50 Corridor 6	Medium Risk
129.	22-47230-34	Walls – Firebreak above wall	Second Floor, Room 50 Corridor 6	Medium Risk
130.	22-47230-18	Infill Panels – Lining to vents within cavity	Second Floor, Room 51 Female WC & Lobby 2	Medium Risk
131.	22-47230-31	Ceiling tiles	Second Floor, Room 51 Female WC & Lobby 2	Medium Risk
132.	22-47230-34	High level horizontal boxing	Second Floor, Room 51 Female WC & Lobby 2	Medium Risk
133.	22-47230-34	Vertical boxing	Second Floor, Room 51 Female WC & Lobby 2	Medium Risk
134.	22-47230-34	Residues to backs of tiles from columns	Second Floor, Room 51 Female WC & Lobby 2	Medium Risk
135.	22-47230-38	Vessels – Rope seal to incinerator	Second Floor, Room 51 Female WC & Lobby 2	Low Risk
136.	22-47230-39	Vessels – pad to opening hatch	Second Floor, Room 51 Female WC & Lobby 2	Medium Risk
137.	22-47230-40	Vessels – internal lining to incinerator	Second Floor, Room 51 Female WC & Lobby 2	Medium Risk
138.	22-47230-41	Flue	Second Floor, Room 51 Female WC & Lobby 2	Low Risk
139.	22-47230-18	Infill Panels – Lining to venting within cavity	Second Floor, Room 52 Male WC & Lobby	Medium Risk
140.	22-47230-31	Ceiling tiles	Second Floor, Room 52 Male WC & Lobby	Medium Risk
141.	22-47230-34	High level horizontal boxing	Second Floor, Room 52 Male WC & Lobby	Medium Risk
142.	22-47230-34	Vertical boxing	Second Floor, Room 52 Male WC & Lobby	Medium Risk
143.	22-47230-34	High level	Second Floor, Room	Medium Risk

		horizontal boxing	54 EX Store	
144.	22-47230-42	Floor	Second Floor, Room 54 EX Store	No Risk
145.	22-47230-50	Walls – High level panels	Second Floor, Room 55 Large Store	Medium Risk
146.	22-47230-50	Boxing to RSJ's around windows	Second Floor, Room 55 Large Store	Medium Risk
147.	22-47230-51	Floor	Second Floor, Room 55 Large Store	No Risk
148.	22-47230-52	Window – Beading to high level windows	Second Floor, Room 55 Large Store	Medium Risk
149.	22-47230-50	Walls – high level panels	Second Floor, Room 56 Racking Store	Medium Risk
150.	22-47230-50	Boxing – cladding to columns	Second Floor, Room 56 Racking Store	Medium Risk
151.	22-47230-50	Horizontal boxing to RSJ's	Second Floor, Room 56 Racking Store	Medium Risk
152.	22-47230-52	Window – Beading to high level windows	Second Floor, Room 56 Racking Store	Medium Risk
153.	22-47230-53	Infill panels – upstands to skylights	Second Floor, Room 56 Racking Store	Medium Risk
154.	22-47230-54	Floor	Second Floor, Room 56 Racking Store	No Risk
155.	22-47230-55	Ceiling – Debris to ceiling tile tracking	Second Floor, Room 56 Racking Store	Medium Risk
156.	22-47230-56	Ceiling – tiles	Second Floor, Room 56 Racking Store	Medium Risk
157.	22-47230-57	Flue to Thorn boiler	Second Floor, Room 56 Racking Store	Medium Risk
158.	22-47230-58	Vessels – Lining to boiler	Second Floor, Room 56 Racking Store	Medium Risk
159.	22-47230-50	High level horizontal boxing	Second Floor, Room 58 Private Dining Room	Medium Risk
160.	22-47230-50	Vertical boxing	Second Floor, Room 58 Private Dining Room	Medium Risk
161.	22-47230-59	Floor	Second Floor, Room 58 Private Dining Room	No Risk
162.	22-47230-84	Stair nosing's	Second Floor, Room 5A Fire Exit Stairwell 4	Low Risk
163.	22-47230-50	High level horizontal boxing	Second Floor, Room 60 Store Room	Medium Risk
164.	22-47230-56	Ceiling – tiles	Second Floor, Room 60 Store Room	Medium Risk

165.	22-47230-60	Walls – Fillet to top of wall	Second Floor, Room 60 Store Room	Medium Risk
166.	22-47230-60	Boxing – Panel to pipe penetration	Second Floor, Room 60 Store Room	Medium Risk
167.	22-47230-60	Fillet to top of wall	Second Floor, Room 60 Store Room	Medium Risk
168.	22-47230-53	Infill panels – upstands to skylights	Second Floor, Room 61 Corridor & Lift Lobby	Medium Risk
169.	22-47230-56	Ceiling – tiles	Second Floor, Room 61 Corridor & Lift Lobby	Medium Risk
170.	22-47230-56	Ceiling – tiles	Second Floor, Room 61 Corridor & Lift Lobby	Medium Risk
171.	22-47230-61	Floor	Second Floor, Room 61 Corridor & Lift Lobby	No Risk
172.	22-47230-62	Panel to ceiling	Second Floor, Room 61 Corridor & Lift Lobby	Medium Risk
173.	22-47230-63	High level horizontal boxing	Second Floor, Room 61 Corridor & Lift Lobby	Medium Risk
174.	22-47230-63	Vertical boxing	Second Floor, Room 61 Corridor & Lift Lobby	Medium Risk
175.	22-47230-33	Floor – Stair Nosings	Second Floor, Room 63 Fire Exit Stairwell 3	Low Risk
176.	22-47230-63	Infill panels – Upstands to skylights	Second Floor, Room 63 Fire Exit Stairwell 3	Medium Risk
177.	22-47230-63	Ceiling tiles – Upstands to skylights	Second Floor, Room 63 Fire Exit Stairwell 3	Medium Risk
178.	22-47230-64	Infill panels – Door header panel	Second Floor, Room 64 Link Bridge	No Risk
179.	22-47230-50	High level horizontal boxing	Second Floor, Room 65 Corridor 8	Medium Risk
180.	22-47230-56	Ceiling tiles	Second Floor, Room 65 Corridor 8	Medium Risk
181.	22-47230-60	Infill panels – Panel to pipe penetration	Second Floor, Room 65 Corridor 8	Medium Risk
182.	22-47230-61	Floor	Second Floor, Room 65 Corridor 8	No Risk
183.	22-47230-65	High level horizontal boxing	Second Floor, Room 66 Electric Store 1	Medium Risk
184.	22-47230-65	Vertical boxing	Second Floor, Room	Medium Risk

			66 Electric Store 1	
185.	22-47230-66	Infill panels – panel behind radiator	Second Floor, Room 66 Electric Store 1	Medium Risk
186.	22-47230-65	High level horizontal boxing	Second Floor, Room 67 Electric Store 2	Medium Risk
187.	22-47230-67	Floor	Second Floor, Room 67 Electric Store 2	No Risk
188.	22-47230-65	High level horizontal boxing	Second Floor, Room 68 Electric Office	Medium Risk
189.	22-47230-65	Vertical boxing	Second Floor, Room 68 Electric Office	Medium Risk
190.	22-47230-66	Infill panels – panel behind x2 radiator	Second Floor, Room 68 Electric Office	Medium Risk
191.	22-47230-67	Floor	Second Floor, Room 68 Electric Office	No Risk
192.	22-47230-68	Walls – Fire break panels between RSJ & walls	Second Floor, Room 68 Electric Office	Medium Risk
193.	22-47230-69	Floor	Second Floor, Room 69 Store 3	No Risk
194.	22-47230-69	Floor	Second Floor, Room 70 Filing Store	No Risk
195.	22-47230-31	Ceiling Tiles	Second Floor, Room 71 Boiler Room	Medium Risk
196.	22-47230-34	High level horizontal boxing	Second Floor, Room 71 Boiler Room	Medium Risk
197.	22-47230-43	Floor	Second Floor, Room 71 Boiler Room	No Risk
198.	22-47230-44	Vessels – Aircell lining to boiler	Second Floor, Room 71 Boiler Room	Medium Risk
199.	22-47230-44	Aircell lining to boiler casing	Second Floor, Room 71 Boiler Room	Medium Risk
200.	22-47230-45	Vessels – Rope seal to door lining and viewing glass	Second Floor, Room 71 Boiler Room	Medium Risk
201.	22-47230-46	Vessels – Debris to boiler	Second Floor, Room 71 Boiler Room	Medium Risk
202.	22-47230-31	Ceiling Tiles	Second Floor, Room 72 Tank Cupboard	Medium Risk
203.	22-47230-31	Ceiling Tiles	Second Floor, Room 72 Tank Cupboard	Medium Risk
204.	22-47230-34	Vertical boxing	Second Floor, Room 72 Tank Cupboard	Medium Risk
205.	22-47230-47	Panel to ceiling	Second Floor, Room 72 Tank Cupboard	Medium Risk
206.	22-47230-47	Debris to floor	Second Floor, Room 72 Tank Cupboard	Medium Risk

207.	22-47230-48	Floor	Second Floor, Room 72 Tank Cupboard	No Risk
208.	22-47230-18	Infill Panels – Extractor fan housing within ceiling void	Second Floor, Room 73 Paint Store	Medium Risk
209.	22-47230-31	Ceiling Tiles	Second Floor, Room 73 Paint Store	Medium Risk
210.	22-47230-34	High level horizontal boxing	Second Floor, Room 73 Paint Store	Medium Risk
211.	22-47230-18	Infill Panels – Extractor fan housing within ceiling void	Second Floor, Room 74 Uniform Store	Medium Risk
212.	22-47230-31	Ceiling Tiles	Second Floor, Room 74 Uniform Store	Medium Risk
213.	22-47230-34	High level horizontal boxing	Second Floor, Room 74 Uniform Store	Medium Risk
214.	22-47230-48	Floor	Second Floor, Room 74 Uniform Store	No Risk
215.	22-47230-49	Floor – debris to floor	Second Floor, Room 74 Uniform Store	No Risk
216.	22-47230-70	Pipes – gasket residues to open pipe flange	Second Floor, Room 75 Main Workshop	Medium Risk
217.	22-47230-71	High level horizontal boxing	Second Floor, Room 75 Main Workshop	Medium Risk
218.	22-47230-71	Vertical boxing to columns	Second Floor, Room 75 Main Workshop	Medium Risk
219.	22-47230-71	Walls – high level panels to walls	Second Floor, Room 75 Main Workshop	Medium Risk
220.	22-47230-72	Debris to floor adjacent convector heater	Second Floor, Room 75 Main Workshop	High Risk
221.	22-47230-72	Loose lying panel behind convector heater	Second Floor, Room 75 Main Workshop	High Risk
222.	22-47230-72	Debris to floor adjacent Electric Office	Second Floor, Room 75 Main Workshop	High Risk
223.	22-47230-73	Floor	Second Floor, Room 75 Main Workshop	No Risk
224.	22-47230-74	Electrical equipment – Gasket to rear of heater	Second Floor, Room 75 Main Workshop	No Risk
225.	22-47230-75	Loose panels within conduits	Second Floor, Room 75 Main Workshop	Medium Risk
226.	22-47230-76	Debris to top of doorway	Second Floor, Room 75 Main Workshop	High Risk

		bulkhead		
227.	22-47230-80	Walls	First Floor, Room 76 Main Stairwell	No Risk
228.	22-47230-81	Ceiling	First Floor, Room 80 Squash Court Changing Room	No Risk
229.	22-47230-82	Floor	First Floor, Room 80 Squash Court Changing Room	Low Risk
230.	22-47230-83	Walls – Ceramic tile adhesive	First Floor, Room 80 Squash Court Changing Room	No Risk
231.	22-47230-75	Boxing to high level beams	First Floor, Room 81 Squash Court	Medium Risk
232.	22-47230-82	Floor	First Floor, Room 82 Squash Court Lobby & Stairs	Low Risk
233.	22-47230-84	Floor – Stair Nosings	First Floor, Room 83 Stairwell	Low Risk
234.	22-47230-85	Floor – Ceiling	First Floor, Room 84 Maintenance Workshop	Medium Risk
235.	22-47230-86	High level horizontal boxing	First Floor, Room 84 Maintenance Workshop	Medium Risk
236.	22-47230-86	Vertical boxing	First Floor, Room 84 Maintenance Workshop	Medium Risk
237.	22-47230-84	Floor – Stair Nosings	First Floor, Room 85 Fire Exit Stairwell 1	Medium Risk
238.	22-47230-38	Rope seal to incinerator	First Floor, Room 86 Female WC & Lobby	Medium Risk
239.	22-47230-39	Pad to opening hatch	First Floor, Room 86 Female WC & Lobby	Medium Risk
240.	22-47230-40	Internal lining to incinerator	First Floor, Room 86 Female WC & Lobby	Medium Risk
241.	22-47230-41	Flue	First Floor, Room 86 Female WC & Lobby	Low Risk
242.	22-47230-85	Ceiling	First Floor, Room 86 Female WC & Lobby) – Medium Risk	Medium Risk
243.	22-47230-86	High level horizontal boxing	First Floor, Room 86 Female WC & Lobby	Medium Risk
244.	22-47230-86	Vertical boxing	First Floor, Room 86 Female WC & Lobby	Medium Risk
245.	22-47230-86	Infill Panels – Lining to vertical boxing housing flue	First Floor, Room 86 Female WC & Lobby	Medium Risk
246.	22-47230-85	Ceiling	First Floor, Room 87 Male WC & Lobby	Medium Risk

247.	22-47230-86	High level horizontal boxing	First Floor, Room 87 Male WC & Lobby	Medium Risk
248.	22-47230-86	Vertical boxing	First Floor, Room 87 Male WC & Lobby	Medium Risk
249.	22-47230-86	Infill panels – lining to vertical boxing pipework	First Floor, Room 87 Male WC & Lobby	Medium Risk
250.	22-47230-84	Floor – Stair nosings	First Floor, Room 88 Fire Exit Stairwell 2	Low Risk
251.	22-47230-85	Ceiling	First Floor, Room 90 Print Room	Medium Risk
252.	22-47230-86	High level horizontal boxing	First Floor, Room 90 Print Room	Medium Risk
253.	22-47230-86	Vertical boxing	First Floor, Room 90 Print Room	Medium Risk
254.	22-47230-85	Ceiling	First Floor, Room 91 Design Room	Medium Risk
255.	22-47230-86	High level horizontal boxing	First Floor, Room 91 Design Room	Medium Risk
256.	22-47230-86	Vertical boxing	First Floor, Room 91 Design Room	Medium Risk
257.	22-47230-84	Floor – Stair nosings	First Floor, Room 93 Fire Exit Stairwell 3	Low Risk
258.	22-47230-87	Ceiling tiles	First Floor, Room 95 Main Printer Workshop	Medium Risk
259.	22-47230-88	High level horizontal boxing	First Floor, Room 95 Main Printer Workshop	Medium Risk
260.	22-47230-88	Vertical boxing	First Floor, Room 95 Main Printer Workshop	Medium Risk
261.	22-47230-89	Boxing to heater flue	First Floor, Room 95 Main Printer Workshop	Medium Risk
262.	22-47230-89	Loose boards within trunking	First Floor, Room 95 Main Printer Workshop	Medium Risk
263.	22-47230-90	Vessels – gasket to boiler	First Floor, Room 95 Main Printer Workshop	Medium Risk
264.	22-47230-91	Infill panels – door header above store 79	First Floor, Room 95 Main Printer Workshop	Medium Risk
265.	22-47230-91	Infill panels – door header above store 78	First Floor, Room 95 Main Printer Workshop	Medium Risk
266.	22-47230-92	Walls	Ground Floor, Room 96 Entrance Lobby	No Risk
267.	22-47230-93	High level horizontal boxing	Ground Floor, Room 98 Lift Motor Room	Medium Risk
268.	22-47230-93	High level horizontal boxing	Ground Floor, Room 99 Office 1	Medium Risk
269.	22-47230-93	High level horizontal boxing	Ground Floor, Room 101 Maintenance Workshop	Medium Risk
270.	Presumed	Vessels –	Ground Floor, Room	Medium Risk

	Sadia water heater	presumed gasket within Sadia water heater	101 Maintenance Workshop	
271.	22-47230-93	High level horizontal boxing	Ground Floor, Room 102 Maintenance Workshop 2	Medium Risk
272.	22-47230-93	High level horizontal boxing	Ground Floor, Room 104 Electric Store Room	Medium Risk
273.	22-47230-93	High level horizontal boxing	Ground Floor, Room 105 Female WC & Lobby	Medium Risk
274.	22-47230-95	Flue	Ground Floor, Room 105 Female WC & Lobby	Low Risk
275.	22-47230-96	Surround to hatch and burner	Ground Floor, Room 105 Female WC & Lobby	Medium Risk
276.	22-47230-97	Lining to incinerator	Ground Floor, Room 105 Female WC & Lobby	Medium Risk
277.	22-47230-93	High level horizontal boxing	Ground Floor, Room 106 Male WC & Lobby	Medium Risk
278.	22-47230-93	Vertical boxing with small tank cupboard above lobby	Ground Floor, Room 106 Male WC & Lobby	Medium Risk
279.	22-47230-98	Electrical equipment – panels between square D isolating box	Ground Floor, Room 109 Switch Room	No Risk
280.	22-47230-100	Vessels – Gasket to heater	Ground Floor, Room 110 Gas intake/Heater Area	No Risk
281.	22-47230-101	High level horizontal boxing	Ground Floor, Room 110 Gas intake/Heater Area	Medium Risk
282.	22-47230-101	High level horizontal boxing	Ground Floor, Room 110 Gas intake/Heater Area	Medium Risk
283.	22-47230-93	High level horizontal boxing	Ground Floor, Room 111 Photo Production Area	Medium Risk
284.	22-47230-99	Floor – Stair nosing	Ground Floor, Room 112 Fire Exit Lobby	Low Risk
285.	22-47230-101	High level horizontal boxing	Ground Floor, Room 114 Lift Motor Room 2	Medium Risk
286.	22-47230-101	High level horizontal boxing	Ground Floor, Room 115 Sprinkler Outlet Room	Medium Risk

287.	22-47230-102	Pipes	Ground Floor, Room 115 Sprinkler Outlet Room	No Risk
288.	22-47230-101	High level horizontal boxing	Ground Floor, Room 116 Plate Room	Medium Risk
289.	22-47230-103	Pads to battery tester	Ground Floor, Room 116 Plate Room	No Risk
290.	22-47230-101	High level horizontal boxing	Ground Floor, Room 117 Store Room	Medium Risk
291.	22-47230-101	High level horizontal boxing	Ground Floor, Room 118 Security Room	Medium Risk
292.	22-47230-104	High level horizontal boxing	Ground Floor, Room 119 Main Factory Floor	Medium Risk
293.	22-47230-104	High level horizontal boxing above former wall	Ground Floor, Room 119 Main Factory Floor	Medium Risk
294.	22-47230-105	Sealing mastic to ducting joints	Ground Floor, Room 119 Main Factory Floor	Low Risk
295.	22-47230-106	Floor – tiles to section left rear of factory floor	Ground Floor, Room 119 Main Factory Floor	No Risk
296.	22-47230-107	Debris to horizontal timber boxing	Ground Floor, Room 119 Main Factory Floor	Medium Risk
297.	22-47230-108	High level horizontal boxing	Ground Floor, Room 122 Vehicle Bay 1	Medium Risk
298.	22-47230-108	High level horizontal boxing	Ground Floor, Room 123 Office	Medium Risk
299.	22-47230-108	High level horizontal boxing	Ground Floor, Room 124 Office 2	Medium Risk
300.	22-47230-108	High level horizontal boxing	Ground Floor, Room 126 Vehicle Bay 2	Medium Risk
301.	22-47230-108	High level horizontal boxing	Ground Floor, Room 127 Vehicle Bay 3	Medium Risk
302.	22-47230-108	High level bulkhead boxing	Ground Floor, Room 127 Vehicle Bay 3	Medium Risk
303.	22-47230-108	High level horizontal boxing	Ground Floor, Room 129 Vehicle Maintenance Area	Medium Risk
304.	Presumed	Packers below metal flue in pipe penetration behind convector heater	Ground Floor, Room 129 Vehicle Maintenance Area	Medium Risk
305.	22-47230-110	Mastic to ductwork	Ground Floor, Room 129 Vehicle Maintenance Area	No Risk
306.	22-47230-111	Vessels – gasket to Benson convector heater	Ground Floor, Room 129 Vehicle Maintenance Area	No Risk

		boiler		
307.	22-47230-112	Vessels – Internal gasket to Benson convector heater boiler	Ground Floor, Room 129 Vehicle Maintenance Area	No Risk
308.	22-47230-113	Floor – Expansion putty to floor	Ground Floor, Room 129 Vehicle Maintenance Area	No Risk
309.	22-47230-108	High level horizontal boxing	Ground Floor, Room 130 Vehicle Bay 4	Medium Risk
310.	22-47230-113	Floor – Expansion putty to floor	Ground Floor, Room 130 Vehicle Bay 4	No Risk
311.	22-47230-114	Walls – packer to flue penetration	Ground Floor, Room 131 Vehicle Bay 4 Unit B	Medium Risk
312.	22-47230-115	Ceiling – Original roof below new external metal roof	Ground Floor, Room 131 Vehicle Bay 4 Unit B	Medium Risk
313.	22-47230-116	Debris to floor around perimeter	Ground Floor, Room 131 Vehicle Bay 4 Unit B	No Risk
314.	22-47230-117	Flashpad used as packer within cable trunking	Ground Floor, Room 131 Vehicle Bay 4 Unit B	Medium Risk
315.	22-47230-118	Loose board sitting in trunking	Ground Floor, Room 131 Vehicle Bay 4 Unit B	No Risk
316.	22-47230-119	Floor	Ground Floor, Room 137 Former WC2	Low Risk
317.	22-47230-119	Floor	Ground Floor, Room 139 Exit Lobby	Low Risk
318.	22-47230-119	Floor	Ground Floor, Room 141 Office	Low Risk
319.	22-47230-119	Floor	Ground Floor, Room 142 Office	Low Risk
320.	22-47230-119	Floor	Ground Floor, Room 143 Staff Room	Low Risk
321.	22-47230-119	Floor	Ground Floor, Room 144 Store Room	Low Risk
322.	22-47230-119	Floor	Ground Floor, Room 144 Store Room	Low Risk
323.	22-47230-119	Floor	Ground Floor, Room 145 Corridor	Low Risk
324.	22-47230-120	Floor	Ground Floor, Room 146 Store Cupboard	Low Risk
325.	22-47230-119	Floor	Ground Floor, Room 147 Kitchenette	Low Risk
326.	22-47230-121	Floor – Flue from	Ground Floor, Room	Low Risk

		former sanitary incinerator	148 Staff WC	
327.	22-47230-77	Floor – Debris to floor adjacent to oil tank	Floor Roof, Room 149 Roof	Medium Risk
328.	22-47230-78	Flue and cowls	Floor Roof, Room 149 Roof	Low Risk
329.	22-47230-79	Felt to roof	Floor Roof, Room 149 Roof	No Risk
330.	22-47230-77	Loose lying panels	Floor Roof, Room 150 Header tank room	Medium Risk
331.	22-47230-78	Flue	Floor Roof, Room 150 Header tank room	Low Risk
332.	22-47230-122	Rainwater goods to block 1B gable end	Floor 0, Room 152 External	Low Risk
333.	22-47230-123	Rainwater goods Jointing compound between cement gutters to Block 1B	Floor 0, Room 152 External	Low Risk
334.	22-47230-124	Fascia – cement fascia behind metal profile to Block 1B	Floor 0, Room 152 External	Low Risk
335.	22-47230-125	Downpipes to block 1B	Floor 0, Room 152 External	Low Risk
336.	22-47230-126	Damp proof course to walls above flat roof to 1C	Floor 0, Room 152 External	No Risk
337.	22-47230-127	Mastic to PVC windows on Block 1A	Floor 0, Room 152 External	No Risk
338.	22-47230-128	Render to concrete entrance canopy	Floor 0, Room 152 External	No Risk
339.	22-47230-129	<i>Debris to path at front elevation – removed as sample</i>	<i>Floor 0, Room 152 External</i>	<i>Removed as sample</i>
340.	22-47230-130	Door – mastic to timber door frames	Floor 0, Room 152 External	Low Risk
341.	22-47230-131	Damp proof course to block 1A	Floor 0, Room 152 External	Low Risk
342.	22-47230-132	Down pipe to gable end	Floor 0, Room 152 External	Low Risk
343.	22-47230-132	Down pipe	Floor 0, Room 152	Medium Risk

		debris under samples downpipe	External	
344.	22-47230-20	Firebreak to tops of wall outside female WC	Second Floor, Room 26A Tank Room – within ceiling void	Medium Risk
345.	22-47230-20	Boxing to RSJ's	Second Floor, Room 26A Tank Room – within ceiling void	Medium Risk
346.	22-47230-20	Boxing to RSJ's	Second Floor, Room 26A Tank Room – within ceiling void	Medium Risk
347.	22-47230-13	Boxing – Cladding to RSJ's above & below windows	Floor Mezzanine, Room 27A Mezzanine above room 27	Medium Risk
348.	22-47230-14	Walls	Floor Mezzanine, Room 27A Mezzanine above room 27	Medium Risk
349.	22-47230-15	Debris to floor	Floor Mezzanine, Room 27A Mezzanine above room 27	Medium Risk
350.	22-47230-23	High level horizontal boxing	Second Floor, Room 37A Office Lobby	Medium Risk
351.	Presumed	Column cladding inner cladding to column at location of PIR sensor	First Floor Staircase/Stairwell 1/002	Very Low Risk
352.	Presumed	Fascia panel above PIR sensor	Second Floor Print Room 2/002	Very Low Risk
353.	Presumed	Fascia panels smoke head attached to asbestos	Second Floor Print Room 2/002	Very Low Risk
354.	TL000363	Boxing Vertical	First Floor Cupboard Store Room 1/078	Low Risk
355.	As TL000363	Ceiling Tile solid lying loose to shelving	First Floor Cupboard Store Room 1/078	Low Risk
356.	As TL000363	Ceiling Tile	First Floor Cupboard Store Room 1/078	Low Risk
357.	As TL000363	Boxing vertical damaged, enclose or removal required	First Floor Cupboard Store Room 1/078	Low Risk
358.	As TL000363	Ceiling Tile – Solid	First Floor Cupboard Store Room	Low Risk

			1/078	
359.	TL000364	Floor tile (with adhesive) black and white	First Floor Cupboard Store Room 1/078	No Risk

Please note the survey carried out was non-intrusive and any areas not listed above may not have been accessed or had samples taken, should major refurbishment be planned for the property, further investigation will be required.

Sunderland
City Council

Photographs of Areas Sampled

Item 1 Ref: 22-47230-1



The high level boxing (insulating board) (Area: Second Floor, Room 1 Meeting Room) contains asbestos.

Any change in its appearance should be recorded and passed to Property Services.

Item 2 Ref: 22-47230-2



The debris to tops of ceiling tiles (insulating board) (Area: Second Floor, Room 1 Meeting Room) contains asbestos.

Any change in its appearance should be recorded and passed to Property Services.

Item 3 Ref: 22-47230-2



The debris to tops of ceiling tiles (insulating board) (Area: Second Floor, Room 1 Meeting Room) contains asbestos.

Any change in its appearance should be recorded and passed to Property Services.

Photographs of Areas Sampled (Cont)

Item 4 Ref: 22-47230-3



The sealant to window seals (mastic) (Area: Second Floor, Room 1 Meeting Room) contains asbestos.

Any change in its appearance should be recorded and passed to Property Services.

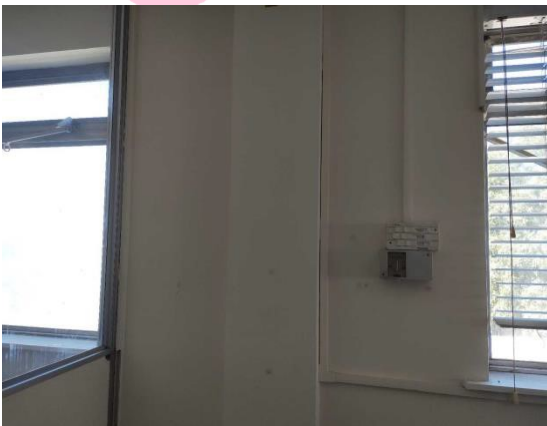
Item 5 Ref: 22-47230-1



The high level horizontal boxing (insulating board) (Area: Second Floor, Room 3 Office 2) contains asbestos.

Any change in its appearance should be recorded and passed to Property Services.

Item 6 Ref: 22-47230-1



The vertical boxing (insulating board) (Area: Second Floor, Room 3 Office 2) contains asbestos.

Any change in its appearance should be recorded and passed to Property Services.

Photographs of Areas Sampled (Cont)

Item 7 Ref: 22-47230-4



The rope seal to safe door (textile) (Area: Second Floor, Room 3 Office 2) contains asbestos.

Any change in its appearance should be recorded and passed to Property Services.

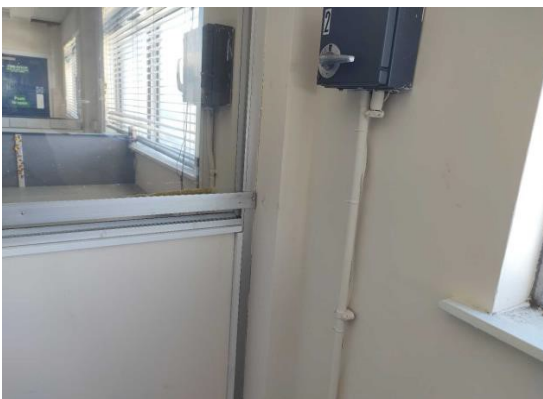
Item 8 Ref: 22-47230-1



The high level horizontal boxing (insulating board) (Area: Second Floor, Room 4 Store) contains asbestos.

Any change in its appearance should be recorded and passed to Property Services.

Item 9 Ref: 22-47230-1



The vertical boxing (insulating board) (Area: Second Floor, Room 4 Store) contains asbestos.

Any change in its appearance should be recorded and passed to Property Services.

Photographs of Areas Sampled (Cont)

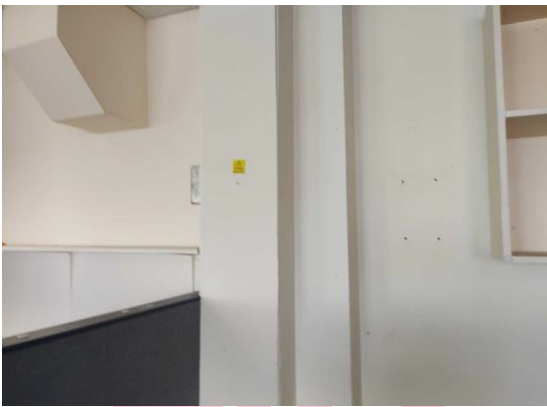
Item 10 Ref: 22-47230-1



The high level horizontal boxing (insulating board) (Area: Second Floor, Room 5 IT Department) contains asbestos.

Any change in its appearance should be recorded and passed to Property Services.

Item 11 Ref: 22-47230-1



The vertical boxing (insulating board) (Area: Second Floor, Room 5 IT Department) contains asbestos.

Any change in its appearance should be recorded and passed to Property Services.

Item 12 Ref: 22-47230-1



The vertical boxing (insulating board) (Area: Second Floor, Room 6 IT Dept Store) contains asbestos.

Any change in its appearance should be recorded and passed to Property Services.

Photographs of Areas Sampled (Cont)

Item 13 Ref: 22-47230-1



The high level horizontal boxing (insulating board) (Area: Second Floor, Room 6 IT Dept Store) contains asbestos.

Any change in its appearance should be recorded and passed to Property Services.

Item 14 Ref: 22-47230-2



The debris to tops of ceiling tiles (insulating board) (Area: Second Floor, Room 6 IT Dept Store) contains asbestos.

Any change in its appearance should be recorded and passed to Property Services.

Item 15 Ref: 22-47230-1



The high level horizontal boxing (insulating board) (Area: Second Floor, Room 7 Corridor) contains asbestos.

Any change in its appearance should be recorded and passed to Property Services.

Photographs of Areas Sampled (Cont)

Item 16 Ref: 22-47230-1



The high level horizontal boxing (insulating board) (Area: Second Floor, Room 8 Server Room) contains asbestos.

Any change in its appearance should be recorded and passed to Property Services.

Item 17 Ref: 22-47230-1



The vertical boxing (insulating board) (Area: Second Floor, Room 8 Server Room) contains asbestos.

Any change in its appearance should be recorded and passed to Property Services.

Item 18 Ref: 22-47230-2



The debris to tops of ceiling tiles (insulating board) (Area: Second Floor, Room 8 Server Room) contains asbestos.

Any change in its appearance should be recorded and passed to Property Services.

Photographs of Areas Sampled (Cont)

Item 19 Ref: 22-47230-1



The vertical boxing behind wood cladding (insulating board) (Area: Second Floor, Room 9 Sales Office) contains asbestos.

Any change in its appearance should be recorded and passed to Property Services.

Item 20 Ref: 22-47230-1



The high level horizontal boxing behind wood cladding (insulating board) (Area: Second Floor, Room 9 Sales Office) contains asbestos.

Any change in its appearance should be recorded and passed to Property Services

Item 21 Ref: 22-47230-5



The high level horizontal boxing (insulating board) (Area: Second Floor, Room 10 EPS Department) contains asbestos.

Any change in its appearance should be recorded and passed to Property Services

Photographs of Areas Sampled (Cont)

Item 22 Ref: 22-47230-5



The high level horizontal boxing (insulating board) (Area: Second Floor, Room 10 EPS Department) contains asbestos.

Any change in its appearance should be recorded and passed to Property Services.

Item 23 Ref: 22-47230-1



The infill panels – upstands to skylight (insulating board) (Area: Second Floor, Room 10 EPS Department) contains asbestos.

Any change in its appearance should be recorded and passed to Property Services.

Item 24 Ref: 22-47230-5



The high level horizontal boxing (insulating board) (Area: Second Floor, Room 11 Corridor) contains asbestos.

Any change in its appearance should be recorded and passed to Property Services.

Photographs of Areas Sampled (Cont)

Item 25 Ref: 22-47230-5



The infill panels – upstands to skylight (insulating board) (Area: Second Floor, Room 11 Corridor) contains asbestos.

Any change in its appearance should be recorded and passed to Property Services.

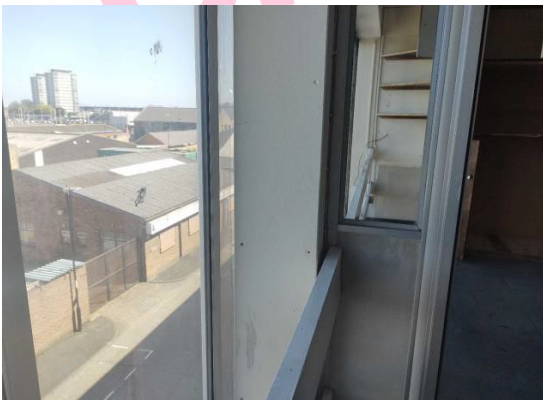
Item 26 Ref: 22-47230-7



The walls – firebreak above door (insulating board) (Area: Second Floor, Room 11 Corridor) contains asbestos.

Any change in its appearance should be recorded and passed to Property Services.

Item 27 Ref: 22-47230-5



The vertical boxing (insulating board) (Area: Second Floor, Room 12 Wages Office) contains asbestos.

Any change in its appearance should be recorded and passed to Property Services.

Photographs of Areas Sampled (Cont)

Item 28 Ref: 22-47230-5



The high level horizontal boxing (insulating board) (Area: Second Floor, Room 12 Wages Office) contains asbestos.

Any change in its appearance should be recorded and passed to Property Services.

Item 29 Ref: 22-47230-8



The floor (insulating board) (Area: Second Floor, Room 12 Wages Office) contains asbestos.

Any change in its appearance should be recorded and passed to Property Services.

Item 30 Ref: 22-47230-5

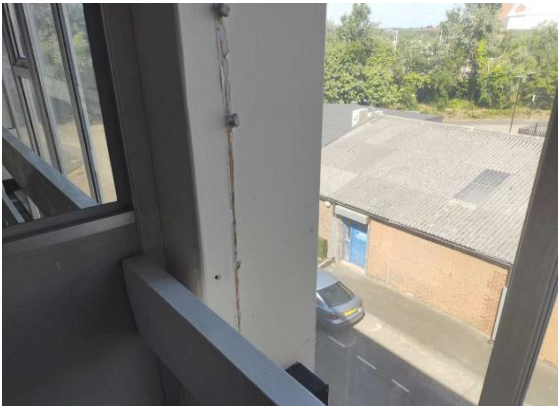


The vertical boxing (insulating board) (Area: Second Floor, Room 13 Petty Cash Office) contains asbestos.

Any change in its appearance should be recorded and passed to Property Services.

Photographs of Areas Sampled (Cont)

Item 31 Ref: 22-47230-5



The vertical boxing (insulating board) (Area: Second Floor, Room 13 Petty Cash Office) contains asbestos.

Any change in its appearance should be recorded and passed to Property Services.

Item 32 Ref: 22-47230-7



The walls – firebreak above door (insulating board) (Area: Second Floor, Room 13 Petty Cash Office) contains asbestos.

Any change in its appearance should be recorded and passed to Property Services.

Item 33 Ref: 22-47230-5



The high level horizontal boxing (insulating board) (Area: Second Floor, Room 14 Office 3) contains asbestos.

Any change in its appearance should be recorded and passed to Property Services.

Photographs of Areas Sampled (Cont)

Item 34 Ref: 22-47230-5



The high level horizontal boxing (insulating board) (Area: Second Floor, Room 14 Office 3) contains asbestos.

Any change in its appearance should be recorded and passed to Property Services.

Item 35 Ref: 22-47230-5



The vertical boxing and panel to boxing (insulating board) (Area: Second Floor, Room 14 Office 3) contains asbestos.

Any change in its appearance should be recorded and passed to Property Services.

Item 36 Ref: 22-47230-5



The high level horizontal boxing (insulating board) (Area: Second Floor, Room 15 Office 4) contains asbestos.

Any change in its appearance should be recorded and passed to Property Services.

Photographs of Areas Sampled (Cont)

Item 37 Ref: 22-47230-6



The infill panels – upstands to skylight (insulating board) (Area: Second Floor, Room 15 Office 4) contains asbestos.

Any change in its appearance should be recorded and passed to Property Services.

Item 38 Ref: 22-47230-7



The walls – firebreak above door (insulating board) (Area: Second Floor, Room 15 Office 4) contains asbestos.

Any change in its appearance should be recorded and passed to Property Services.

Item 39 Ref: 22-47230-9



The ceiling – felt to roof (bitumen) (Area: Second Floor, Room 15 Office 4) does not contain asbestos.

Photographs of Areas Sampled (Cont)

Item 40 Ref: 22-47230-10



The ceiling tiles (insulating board) (Area: Second Floor, Room 16 Male WC and Lobby) contains asbestos.

Any change in its appearance should be recorded and passed to Property Services.

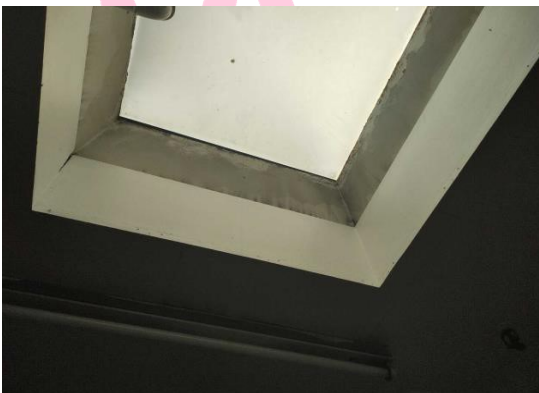
Item 41 Ref: 22-47230-5



The high level horizontal boxing (insulating board) (Area: Second Floor, Room 16 Male WC and Lobby) contains asbestos.

Any change in its appearance should be recorded and passed to Property Services.

Item 42 Ref: 22-47230-6



The infill panels – upstands to skylights (insulating board) (Area: Second Floor, Room 16 Male WC and Lobby) contains asbestos.

Any change in its appearance should be recorded and passed to Property Services.

Photographs of Areas Sampled (Cont)

Item 43 Ref: 22-47230-7



The walls – firebreak above door (insulating board) (Area: Second Floor, Room 16 Male WC and Lobby) contains asbestos.

Any change in its appearance should be recorded and passed to Property Services.

Item 44 Ref: 22-47230-10



The ceiling tiles (insulating board) (Area: Second Floor, Room 17 Female WC and Lobby) contains asbestos.

Any change in its appearance should be recorded and passed to Property Services.

Item 45 Ref: 22-47230-5



The high level horizontal boxing (insulating board) (Area: Second Floor, Room 17 Female WC and Lobby) contains asbestos.

Any change in its appearance should be recorded and passed to Property Services.

Photographs of Areas Sampled (Cont)

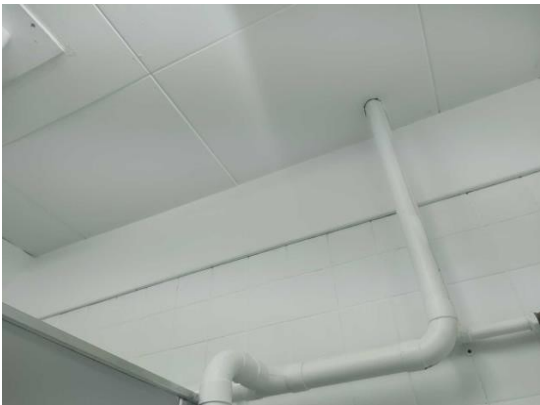
Item 46 Ref: 22-47230-6



The infill panels – upstands to skylight (insulating board) (Area: Second Floor, Room 17 Female WC and Lobby) contains asbestos.

Any change in its appearance should be recorded and passed to Property Services.

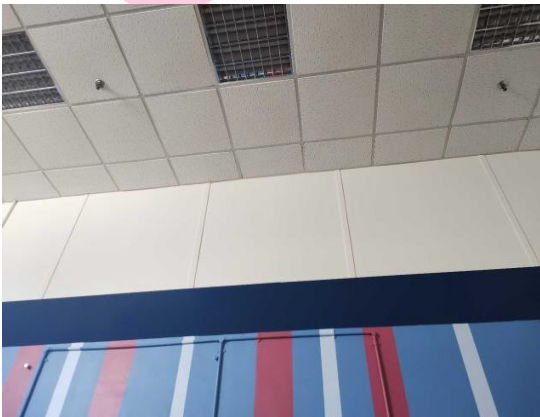
Item 47 Ref: 22-47230-7



The walls – firebreak above door (insulating board) (Area: Second Floor, Room 17 Female WC and Lobby) contains asbestos.

Any change in its appearance should be recorded and passed to Property Services.

Item 48 Ref: 22-47230-11



The walls – panels to high level wall (insulating board) (Area: Second Floor, Room 18 Contracts Office) contains asbestos.

Any change in its appearance should be recorded and passed to Property Services.

Photographs of Areas Sampled (Cont)

Item 49 Ref: 22-47230-12



The boxing (insulating board) (Area: Second Floor, Room 18 Contracts Office) contains asbestos.

Any change in its appearance should be recorded and passed to Property Services.

Item 50 Ref: 22-47230-13



The boxing – cladding to RSJs (insulating board) (Area: Second Floor, Room 18 Contracts Office) contains asbestos.

Any change in its appearance should be recorded and passed to Property Services.

Item 51 Ref: 22-47230-13



The high level horizontal boxing (insulating board) (Area: Second Floor, Room 19 Finance Office) contains asbestos.

Any change in its appearance should be recorded and passed to Property Services.

Photographs of Areas Sampled (Cont)

Item 52 Ref: 22-47230-13



The high level horizontal boxing (insulating board) (Area: Second Floor, Room 19 Finance Office) contains asbestos.

Any change in its appearance should be recorded and passed to Property Services.

Item 53 Ref: 22-47230-13



The vertical boxing (insulating board) (Area: Second Floor, Room 19 Finance Office) contains asbestos.

Any change in its appearance should be recorded and passed to Property Services.

Item 54 Ref: 22-47230-2



The debris to tops of ceiling tiles (insulating board) (Area: Second Floor, Room 19 Finance Office) contains asbestos.

Any change in its appearance should be recorded and passed to Property Services.

Photographs of Areas Sampled (Cont)

Item 55 Ref: 22-47230-6



The infill panels – upstands to skylight (insulating board) (Area: Second Floor, Room 19 Finance Office) contains asbestos.

Any change in its appearance should be recorded and passed to Property Services.

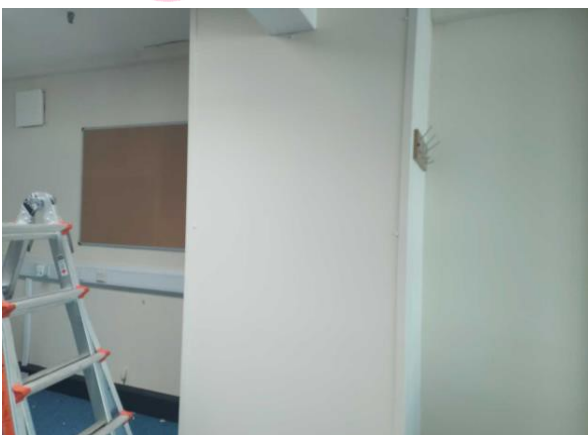
Item 56 Ref: 22-47230-13



The high level horizontal boxing (insulating board) (Area: Second Floor, Room 20 Office 5) contains asbestos.

Any change in its appearance should be recorded and passed to Property Services.

Item 57 Ref: 22-47230-13

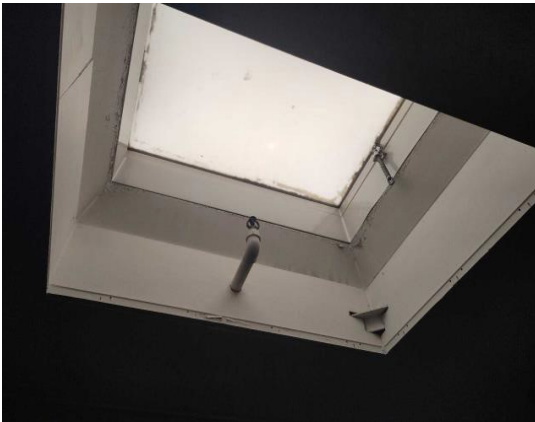


The vertical boxing behind wood cladding (insulating board) (Area: Second Floor, Room 20 Office 5) contains asbestos.

Any change in its appearance should be recorded and passed to Property Services.

Photographs of Areas Sampled (Cont)

Item 58 Ref: 22-47230-16



The infill panels – upstands to skylight (insulating board) (Area: Second Floor, Room 20 Office 5) contains asbestos.

Any change in its appearance should be recorded and passed to Property Services.

Item 59 Ref: 22-47230-13



The high level horizontal boxing (insulating board) (Area: Second Floor, Room 21 Office 6) contains asbestos.

Any change in its appearance should be recorded and passed to Property Services.

Item 60 Ref: 22-47230-13

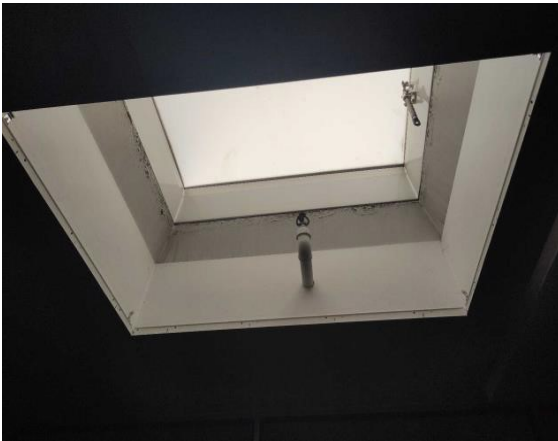


The vertical boxing (insulating board) (Area: Second Floor, Room 21 Office 6) contains asbestos.

Any change in its appearance should be recorded and passed to Property Services.

Photographs of Areas Sampled (Cont)

Item 61 Ref: 22-47230-16



The infill panels – upstands to skylight (insulating board) (Area: Second Floor, Room 21 Office 6) contains asbestos.

Any change in its appearance should be recorded and passed to Property Services.

Item 62 Ref: 22-47230-13



The high level horizontal boxing (insulating board) (Area: Second Floor, Room 22 Office 7) contains asbestos.

Any change in its appearance should be recorded and passed to Property Services.

Item 63 Ref: 22-47230-13



The vertical boxing behind wood cladding (insulating board) (Area: Second Floor, Room 22 Office 7) contains asbestos.

Any change in its appearance should be recorded and passed to Property Services.

Photographs of Areas Sampled (Cont)

Item 64 Ref: 22-47230-16



The infill panels – upstands to skylight (insulating board) (Area: Second Floor, Room 22 Office 7) contains asbestos.

Any change in its appearance should be recorded and passed to Property Services.

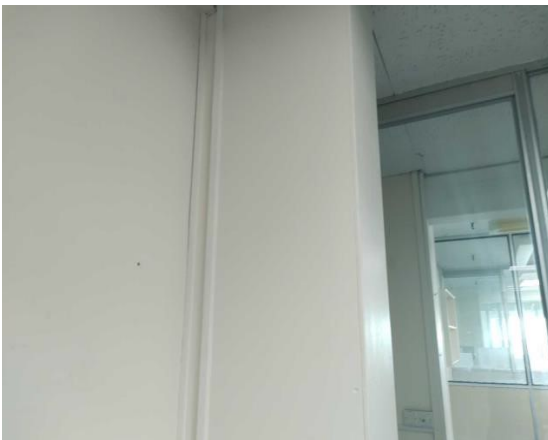
Item 65 Ref: 22-47230-13



The high level horizontal boxing (insulating board) (Area: Second Floor, Room 23 Office 8) contains asbestos.

Any change in its appearance should be recorded and passed to Property Services.

Item 66 Ref: 22-47230-13

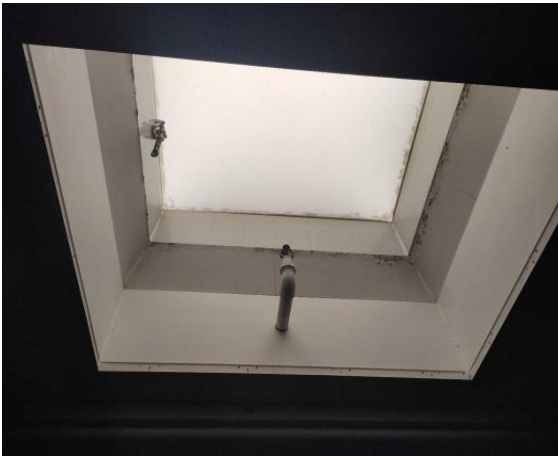


The vertical boxing (insulating board) (Area: Second Floor, Room 23 Office 8) contains asbestos.

Any change in its appearance should be recorded and passed to Property Services.

Photographs of Areas Sampled (Cont)

Item 67 Ref: 22-47230-16



The infill panels – upstands to skylight (insulating board)
(Area: Second Floor, Room 23 Office 8) contains asbestos.

Any change in its appearance should be recorded and passed to Property Services.

Item 68 Ref: 22-47230-13



The high level horizontal boxing (insulating board)
(Area: Second Floor, Room 24 Office 9) contains asbestos.

Any change in its appearance should be recorded and passed to Property Services.

Item 69 Ref: 22-47230-16



The infill panels – upstands to skylight (insulating board)
(Area: Second Floor, Room 24 Office 9) contains asbestos.

Any change in its appearance should be recorded and passed to Property Services.

Photographs of Areas Sampled (Cont)

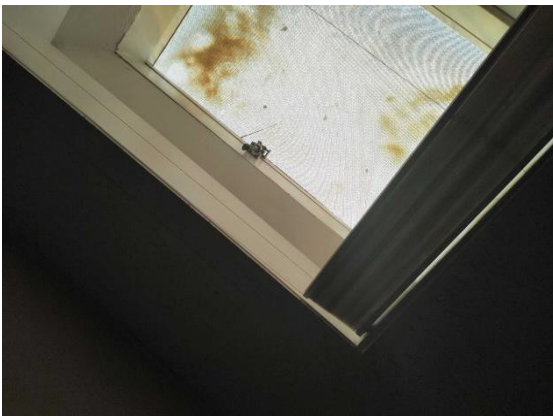
Item 70 Ref: 22-47230-13



The high level horizontal boxing (insulating board) (Area: Second Floor, Room 25 Finance Room 2) contains asbestos.

Any change in its appearance should be recorded and passed to Property Services.

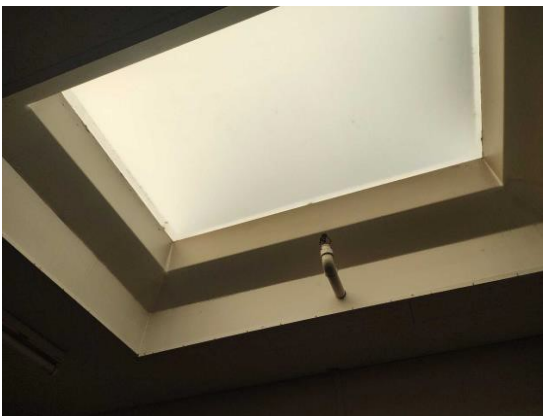
Item 71 Ref: 22-47230-16



The infill panels – upstands to skylight (insulating board) (Area: Second Floor, Room 25 Finance Room 2) contains asbestos.

Any change in its appearance should be recorded and passed to Property Services.

Item 72 Ref: 22-47230-17



The infill panels – upstands to skylight (insulating board) (Area: Second Floor, Room 26 Main Office) contains asbestos.

Any change in its appearance should be recorded and passed to Property Services.

Photographs of Areas Sampled (Cont)

Item 73 Ref: 22-47230-18



The infill panels – extractor fan housing within ceiling void (insulating board) (Area: Second Floor, Room 26 Main Office) contains asbestos.

Any change in its appearance should be recorded and passed to Property Services.

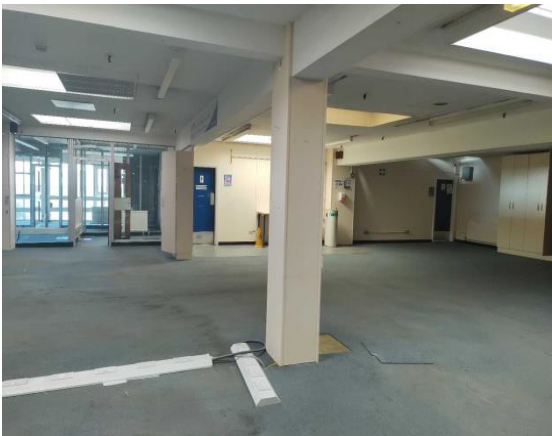
Item 74 Ref: 22-47230-19



The high level horizontal boxing (insulating board) (Area: Second Floor, Room 26 Main Office) contains asbestos.

Any change in its appearance should be recorded and passed to Property Services.

Item 75 Ref: 22-47230-19



The vertical boxing over columns and RSJ's (insulating board) (Area: Second Floor, Room 26 Main Office) contains asbestos.

Any change in its appearance should be recorded and passed to Property Services.

Photographs of Areas Sampled (Cont)

Item 76 Ref: 22-47230-10



The ceiling tiles (insulating board) (Area: Second Floor, Room 27 Store Room) contains asbestos.

Any change in its appearance should be recorded and passed to Property Services.

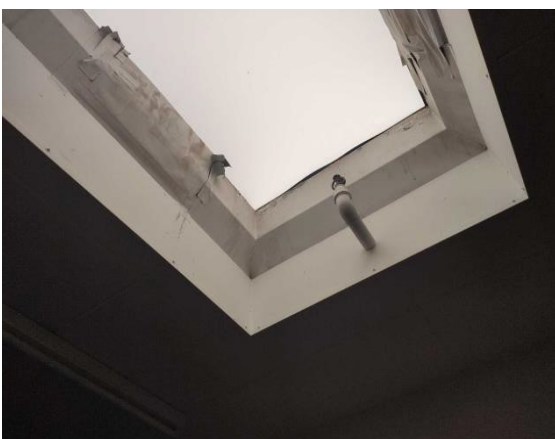
Item 77 Ref: 22-47230-12



The high level horizontal boxing (insulating board) (Area: Second Floor, Room 27 Store Room) contains asbestos.

Any change in its appearance should be recorded and passed to Property Services.

Item 78 Ref: 22-47230-6



The infill panels – upstands to skylight (insulating board) (Area: Second Floor, Room 27 Store Room) contains asbestos.

Any change in its appearance should be recorded and passed to Property Services.

Photographs of Areas Sampled (Cont)

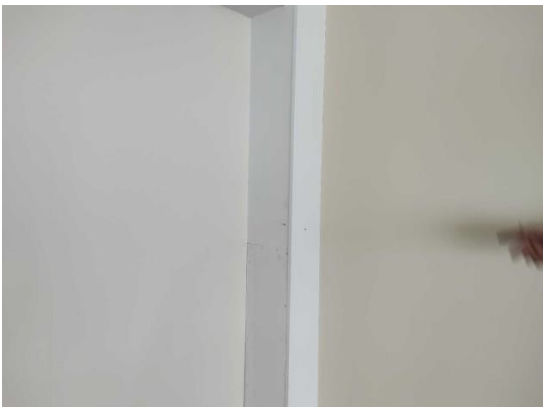
Item 79 Ref: 22-47230-19



The high level horizontal boxing (insulating board) (Area: Second Floor, Room 28 Canteen) contains asbestos.

Any change in its appearance should be recorded and passed to Property Services.

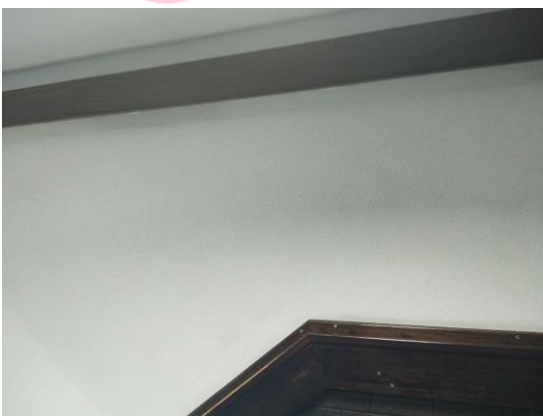
Item 80 Ref: 22-47230-19



The vertical boxing (insulating board) (Area: Second Floor, Room 28 Canteen) contains asbestos.

Any change in its appearance should be recorded and passed to Property Services.

Item 81 Ref: 22-47230-25



The walls (render) (Area: Second Floor, Room 29 Main Lobby and Stairs) does not contain asbestos.

Photographs of Areas Sampled (Cont)

Item 82 Ref: 22-47230-27



The infill panels – upstands to skylight (insulating board) (Area: Second Floor, Room 29 Main Lobby and Stairs) contains asbestos.

Any change in its appearance should be recorded and passed to Property Services.

Item 83 Ref: 22-47230-18



The infill panels – extractor fan housing within ceiling void (insulating board) (Area: Second Floor, Room 31 Bingo Store) contains asbestos.

Any change in its appearance should be recorded and passed to Property Services.

Item 84 Ref: 22-47230-19



The high level horizontal boxing (insulating board) (Area: Second Floor, Room 31 Bingo Store) contains asbestos.

Any change in its appearance should be recorded and passed to Property Services.

Photographs of Areas Sampled (Cont)

Item 85 Ref: 22-47230-22



The floor (tiles & adhesive)
(Area: Second Floor, Room 31
Bingo Store) does not contain
asbestos.

Item 86 Ref: 22-47230-18



The infill panels – extractor
fan housing within ceiling void
(insulating board) (Area:
Second Floor, Room 32 Prom
Games Store) contains
asbestos.

Any change in its appearance
should be recorded and
passed to Property Services.

Item 87 Ref: 22-47230-19



The high level horizontal
boxing (insulating board)
(Area: Second Floor, Room 32
Prom Games Store) contains
asbestos.

Any change in its appearance
should be recorded and
passed to Property Services.

Photographs of Areas Sampled (Cont)

Item 88 Ref: 22-47230-22



The floor (tiles & adhesive)
(Area: Second Floor, Room 32
Prom Games Store) does not
contain asbestos.

Item 89 Ref: 22-47230-18



The infill panels – extractor
fan housing within ceiling void
(insulating board) (Area:
Second Floor, Room 34 Frank
Cronin Office) contains
asbestos.

Any change in its appearance
should be recorded and
passed to Property Services.

Item 90 Ref: 22-47230-23

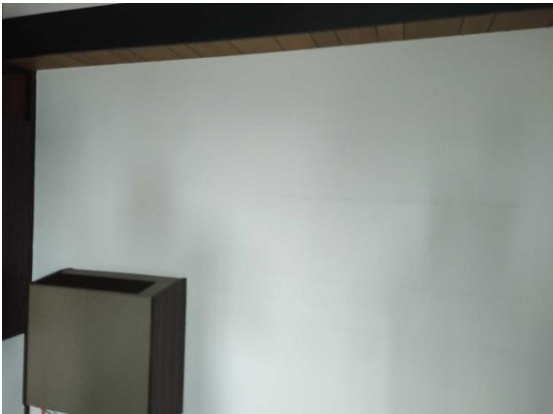


The high level horizontal
boxing (insulating board)
(Area: Second Floor, Room 34
Frank Cronin Office) contains
asbestos.

Any change in its appearance
should be recorded and
passed to Property Services.

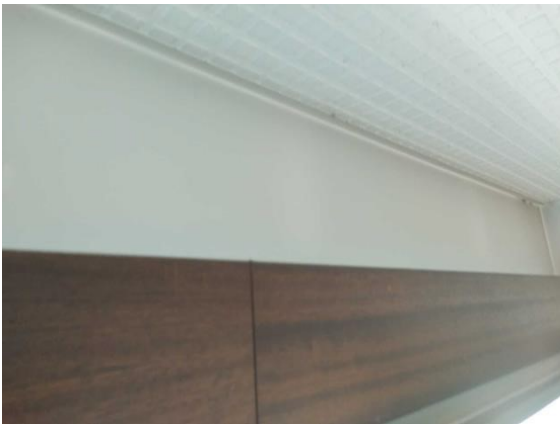
Photographs of Areas Sampled (Cont)

Item 91 Ref: 22-47230-28



The walls (textured coating)
(Area: Second Floor, Room 34
Frank Cronin Office) does not
contain asbestos.

Item 92 Ref: 22-47230-23



The high level horizontal
boxing (insulating board)
(Area: Second Floor, Room 35
Paddy Cronin Office) contains
asbestos.

Any change in its appearance
should be recorded and
passed to Property Services.

Item 93 Ref: 22-47230-28



The walls (textured coating)
(Area: Second Floor, Room 35
Paddy Cronin Office) does not
contain asbestos.

Photographs of Areas Sampled (Cont)

Item 94 Ref: 22-47230-23



The high level horizontal boxing (insulating board) (Area: Second Floor, Room 36 WC and Lobby) contains asbestos.

Any change in its appearance should be recorded and passed to Property Services.

Item 95 Ref: 22-47230-23



The high level horizontal boxing (insulating board) (Area: Second Floor, Room 37 Corridor 3) contains asbestos.

Any change in its appearance should be recorded and passed to Property Services.

Item 96 Ref: 22-47230-27

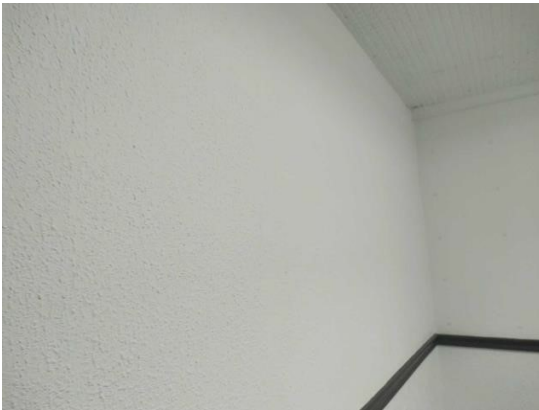


The infill panels – upstands to skylight (insulating board) (Area: Second Floor, Room 37 Corridor 3) contains asbestos.

Any change in its appearance should be recorded and passed to Property Services.

Photographs of Areas Sampled (Cont)

Item 97 Ref: 22-47230-28



The walls (textured coating) (Area: Second Floor, Room 37 Corridor 3) does not contain asbestos.

Item 98 Ref: 22-47230-29



The floor – grey and red tiles to concrete (tiles & adhesive) (Area: Second Floor, Room 38 Squash Court Changing Room) contains asbestos.

Any change in its appearance should be recorded and passed to Property Services.

Item 99 Ref: 22-47230-30



The walls – ceramic tile adhesive (adhesive) (Area: Second Floor, Room 38 Squash Court Changing Room) does not contain asbestos.

Photographs of Areas Sampled (Cont)

Item 100 Ref: 22-47230-29



The floor – grey and red tiles to concrete (tiles & adhesive) (Area: Second Floor, Room 39 Squash Court Viewing Area) contains asbestos.

Any change in its appearance should be recorded and passed to Property Services.

Item 101 Ref: 22-47230-23



The high level horizontal boxing (insulating board) (Area: Second Floor, Room 40 Reception) contains asbestos.

Any change in its appearance should be recorded and passed to Property Services.

Item 102 Ref: 22-47230-24



The debris to tops of ceiling tiles (insulating board) (Area: Second Floor, Room 40 Reception) contains asbestos.

Any change in its appearance should be recorded and passed to Property Services.

Photographs of Areas Sampled (Cont)

Item 103 Ref: 22-47230-25



The walls (render) (Area: Second Floor, Room 41 Cupboard) does not contain asbestos.

Item 104 Ref: 22-47230-26



The walls – firebreak to top of wall (insulating board) (Area: Second Floor, Room 41 Cupboard) contains asbestos.

Any change in its appearance should be recorded and passed to Property Services.

Item 105 Ref: 22-47230-23



The high level horizontal boxing (insulating board) (Area: Second Floor, Room 42 Sound Cupboard) contains asbestos.

Any change in its appearance should be recorded and passed to Property Services.

Photographs of Areas Sampled (Cont)

Item 106 Ref: 22-47230-25



The walls (render) (Area: Second Floor, Room 42 Sound Cupboard) does not contain asbestos.

Item 107 Ref: 22-47230-26



The walls – firebreak to top of wall (insulating board) (Area: Second Floor, Room 42 Sound Cupboard) contains asbestos.

Any change in its appearance should be recorded and passed to Property Services.

Item 108 Ref: 22-47230-13



The boxing – underside of cladding to RSJ's above and below windows (insulating board) (Area: Second Floor, Room 43 Frank Conin Suite) contains asbestos.

Any change in its appearance should be recorded and passed to Property Services.

Photographs of Areas Sampled (Cont)

Item 109 Ref: 22-47230-19



The high level horizontal boxing (insulating board) (Area: Second Floor, Room 44 Corridor 4) contains asbestos.

Any change in its appearance should be recorded and passed to Property Services.

Item 110 Ref: 22-47230-21



The ceiling (bitumen) (Area: Second Floor, Room 44 Corridor 4) does not contain asbestos.

Item 111 Ref: 22-47230-23

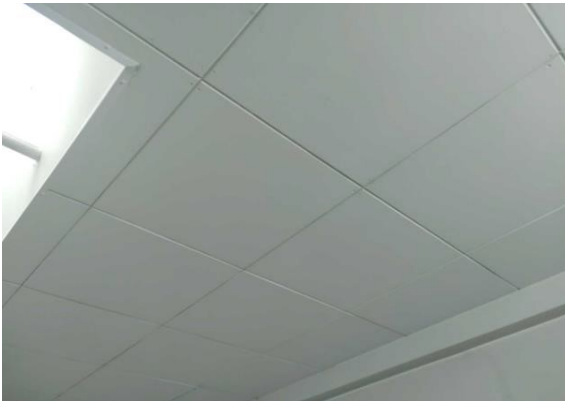


The high level horizontal boxing (insulating board) (Area: Second Floor, Room 45 Key Cupboard) contains asbestos.

Any change in its appearance should be recorded and passed to Property Services.

Photographs of Areas Sampled (Cont)

Item 112 Ref: 22-47230-31



The ceiling tiles (insulating board) (Area: Second Floor, Room 46 Fire Exit Stairwell 1) contains asbestos.

Any change in its appearance should be recorded and passed to Property Services.

Item 113 Ref: 22-47230-32



The infill panels – upstands to skylights (insulating board) (Area: Second Floor, Room 46 Fire Exit Stairwell 1) contains asbestos.

Any change in its appearance should be recorded and passed to Property Services.

Item 114 Ref: 22-47230-33



The floor – stair nosings (composite) (Area: Second Floor, Room 46 Fire Exit Stairwell 1) contains asbestos.

Any change in its appearance should be recorded and passed to Property Services.

Photographs of Areas Sampled (Cont)

Item 115 Ref: 22-47230-34



The high level horizontal boxing (insulating board) (Area: Second Floor, Room 47 Comms Room) contains asbestos.

Any change in its appearance should be recorded and passed to Property Services.

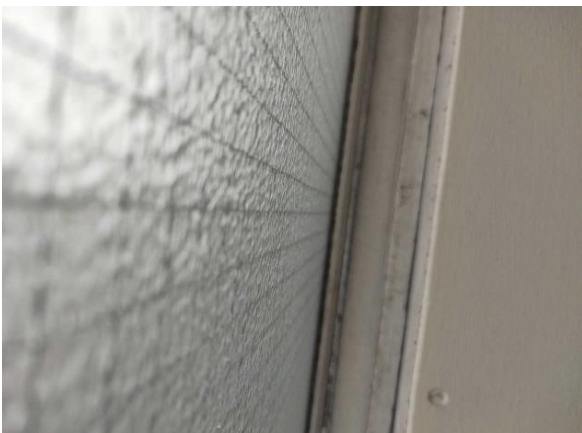
Item 116 Ref: 22-47230-34



The vertical boxing (insulating board) (Area: Second Floor, Room 47 Comms Room) contains asbestos.

Any change in its appearance should be recorded and passed to Property Services.

Item 117 Ref: 22-47230-34



The window – fillet to window reveal behind cladded RSJ (insulating board) (Area: Second Floor, Room 47 Comms Room) contains asbestos.

Any change in its appearance should be recorded and passed to Property Services.

Photographs of Areas Sampled (Cont)

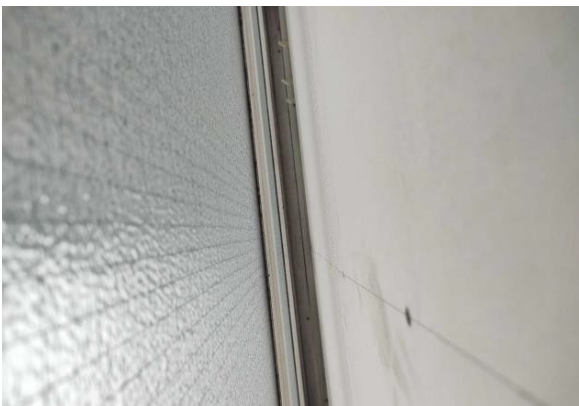
Item 118 Ref: 22-47230-35



The debris to tops of ceiling tiles (insulating board) (Area: Second Floor, Room 47 Comms Room) contains asbestos.

Any change in its appearance should be recorded and passed to Property Services.

Item 119 Ref: 22-47230-34



The window – fillet to window reveal behind cladded RSJ (insulating board) (Area: Second Floor, Room 48 First Aid Room) contains asbestos.

Any change in its appearance should be recorded and passed to Property Services.

Item 120 Ref: 22-47230-34



The high level horizontal boxing (insulating board) (Area: Second Floor, Room 48 First Aid Room) contains asbestos.

Any change in its appearance should be recorded and passed to Property Services.

Photographs of Areas Sampled (Cont)

Item 121 Ref: 22-47230-36



The vertical boxing (insulating board) (Area: Second Floor, Room 48 First Aid Room) contains asbestos.

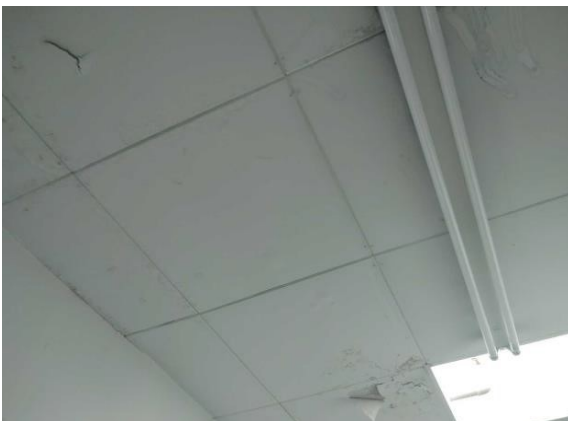
Any change in its appearance should be recorded and passed to Property Services.

Item 122 Ref: 22-47230-37



The downpipes – filling to pipe flange knuckle (insulation) (Area: Second Floor, Room 48 First Aid Room) does not contain asbestos.

Item 123 Ref: 22-47230-31

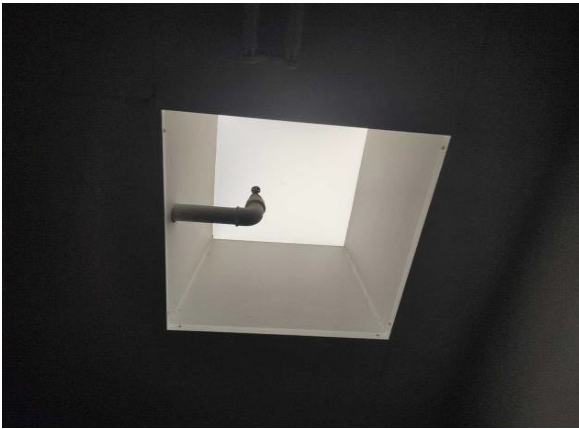


The ceiling tiles (insulating board) (Area: Second Floor, Room 49 Corridor 5) contains asbestos.

Any change in its appearance should be recorded and passed to Property Services.

Photographs of Areas Sampled (Cont)

Item 124 Ref: 22-47230-32



The infill panels – upstands to skylights (insulating board) (Area: Second Floor, Room 49 Corridor 5) contains asbestos.

Any change in its appearance should be recorded and passed to Property Services.

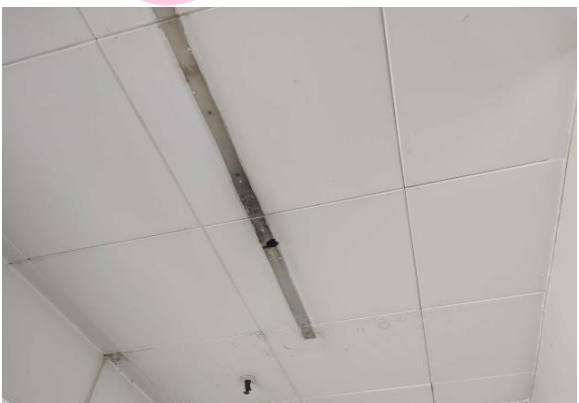
Item 125 Ref: 22-47230-34



The high level horizontal boxing (insulating board) (Area: Second Floor, Room 49 Corridor 5) contains asbestos.

Any change in its appearance should be recorded and passed to Property Services.

Item 126 Ref: 22-47230-31



The ceiling tiles (insulating board) (Area: Second Floor, Room 50 Corridor 6) contains asbestos.

Any change in its appearance should be recorded and passed to Property Services.

Photographs of Areas Sampled (Cont)

Item 127 Ref: 22-47230-32



The infill panels – upstands to skylights (insulating board) (Area: Second Floor, Room 50 Corridor 6) contains asbestos.

Any change in its appearance should be recorded and passed to Property Services.

Item 128 Ref: 22-47230-34



The high level horizontal boxing (insulating board) (Area: Second Floor, Room 50 Corridor 6) contains asbestos.

Any change in its appearance should be recorded and passed to Property Services.

Item 129 Ref: 22-47230-34



The walls – firebreak above wall (to rack storage) (insulating board) (Area: Second Floor, Room 50 Corridor 6) contains asbestos.

Any change in its appearance should be recorded and passed to Property Services.

Photographs of Areas Sampled (Cont)

Item 130 Ref: 22-47230-18



The infill panels – lining to vents within wall cavity (insulating board) (Area: Second Floor, Room 51 Female WC and Lobby 2) contains asbestos.

Any change in its appearance should be recorded and passed to Property Services.

Item 131 Ref: 22-47230-31



The ceiling tiles (insulating board) (Area: Second Floor, Room 51 Female WC and Lobby 2) contains asbestos.

Any change in its appearance should be recorded and passed to Property Services.

Item 132 Ref: 22-47230-34



The high level horizontal boxing (insulating board) (Area: Second Floor, Room 51 Female WC and Lobby 2) contains asbestos.

Any change in its appearance should be recorded and passed to Property Services.

Photographs of Areas Sampled (Cont)

Item 133 Ref: 22-47230-34



The vertical boxing (insulating board) (Area: Second Floor, Room 51 Female WC and Lobby 2) contains asbestos.

Any change in its appearance should be recorded and passed to Property Services.

Item 134 Ref: 22-47230-34



The residues to backs of tiles from columns (insulating board) (Area: Second Floor, Room 51 Female WC and Lobby 2) contains asbestos.

Any change in its appearance should be recorded and passed to Property Services.

Item 135 Ref: 22-47230-38



The vessels – rope seal to incinerator (textile) (Area: Second Floor, Room 51 Female WC and Lobby 2) contains asbestos.

Any change in its appearance should be recorded and passed to Property Services.

Photographs of Areas Sampled (Cont)

Item 136 Ref: 22-47230-39



The vessels – pad to opening hatch (insulating board) (Area: Second Floor, Room 51 Female WC and Lobby 2) contains asbestos.

Any change in its appearance should be recorded and passed to Property Services.

Item 137 Ref: 22-47230-40



The vessels – internal lining to incinerator (insulating board) (Area: Second Floor, Room 51 Female WC and Lobby 2) contains asbestos.

Any change in its appearance should be recorded and passed to Property Services.

Item 138 Ref: 22-47230-41



The flue (cement) (Area: Second Floor, Room 51 Female WC and Lobby 2) contains asbestos.

Any change in its appearance should be recorded and passed to Property Services.

Photographs of Areas Sampled (Cont)

Item 139 Ref: 22-47230-18



The infill panels – lining to venting within wall cavity (insulating board) (Area: Second Floor, Room 52 Male WC and Lobby) contains asbestos.

Any change in its appearance should be recorded and passed to Property Services.

Item 140 Ref: 22-47230-31



The ceiling tiles (insulating board) (Area: Second Floor, Room 52 Male WC and Lobby) contains asbestos.

Any change in its appearance should be recorded and passed to Property Services.

Item 141 Ref: 22-47230-34



The high level horizontal boxing (insulating board) (Area: Second Floor, Room 52 Male WC and Lobby) contains asbestos.

Any change in its appearance should be recorded and passed to Property Services.

Photographs of Areas Sampled (Cont)

Item 142 Ref: 22-47230-34



The vertical boxing (insulating board) (Area: Second Floor, Room 52 Male WC and Lobby) contains asbestos.

Any change in its appearance should be recorded and passed to Property Services.

Item 143 Ref: 22-47230-34



The high level horizontal boxing (insulating board) (Area: Second Floor, Room 54 Ex Store) contains asbestos.

Any change in its appearance should be recorded and passed to Property Services.

Item 144 Ref: 22-47230-42



The floor (tiles & adhesive) (Area: Second Floor, Room 54 Ex Store) does not contain asbestos.

Photographs of Areas Sampled (Cont)

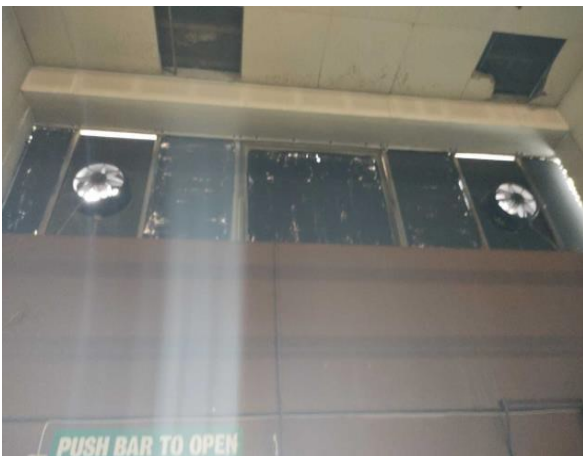
Item 145 Ref: 22-47230-50



The high level wall panels (insulating board) (Area: Second Floor, Room 55 Large Store) contains asbestos.

Any change in its appearance should be recorded and passed to Property Services.

Item 146 Ref: 22-47230-50



The boxing to RSJ's around windows (insulating board) (Area: Second Floor, Room 55 Large Store) contains asbestos.

Any change in its appearance should be recorded and passed to Property Services.

Item 147 Ref: 22-47230-51



The floor (vinyl) (Area: Second Floor, Room 55 Large Store) does not contain asbestos.

Photographs of Areas Sampled (Cont)

Item 148 Ref: 22-47230-52



The window – beading to high level windows (insulating board) (Area: Second Floor, Room 55 Large Store) contains asbestos.

Any change in its appearance should be recorded and passed to Property Services.

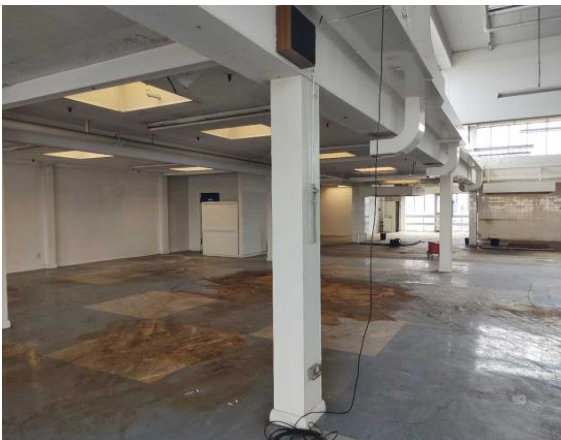
Item 149 Ref: 22-47230-50



The walls – high level panels (insulating board) (Area: Second Floor, Room 56 Racking Store) contains asbestos.

Any change in its appearance should be recorded and passed to Property Services.

Item 150 Ref: 22-47230-50



The boxing – cladding to columns (insulating board) (Area: Second Floor, Room 56 Racking Store) does not contain asbestos.

Any change in its appearance should be recorded and passed to Property Services.

Photographs of Areas Sampled (Cont)

Item 151 Ref: 22-47230-50



The horizontal boxing to RSJ's (insulating board) (Area: Second Floor, Room 56 Racking Store) contains asbestos.

Any change in its appearance should be recorded and passed to Property Services.

Item 152 Ref: 22-47230-52



The window – beading to high level windows (insulating board) (Area: Second Floor, Room 56 Racking Store) contains asbestos.

Any change in its appearance should be recorded and passed to Property Services.

Item 153 Ref: 22-47230-53



The infill panels – upstands to skylights (insulating board) (Area: Second Floor, Room 56 Racking Store) contains asbestos.

Any change in its appearance should be recorded and passed to Property Services.

Photographs of Areas Sampled (Cont)

Item 154 Ref: 22-47230-54



The floor (tiles & adhesive)
(Area: Second Floor, Room 56
Racking Store) does not
contain asbestos.

Item 155 Ref: 22-47230-55



The ceiling – debris to ceiling
tile tracking (insulating board)
(Area: Second Floor, Room 56
Racking Store) contains
asbestos.

Any change in its appearance
should be recorded and
passed to Property Services.

Item 156 Ref: 22-47230-56



The ceiling tiles (insulating
board) (Area: Second Floor,
Room 56 Racking Store)
contains asbestos.

Any change in its appearance
should be recorded and
passed to Property Services.

Photographs of Areas Sampled (Cont)

Item 157 Ref: 22-47230-57



The flue to Thorn boiler (cement) (Area: Second Floor, Room 56 Racking Store) contains asbestos.

Any change in its appearance should be recorded and passed to Property Services.

Item 158 Ref: 22-47230-58



The vessels – lining to boiler (millboard) (Area: Second Floor, Room 56 Racking Store) contains asbestos.

Any change in its appearance should be recorded and passed to Property Services.

Item 159 Ref: 22-47230-50

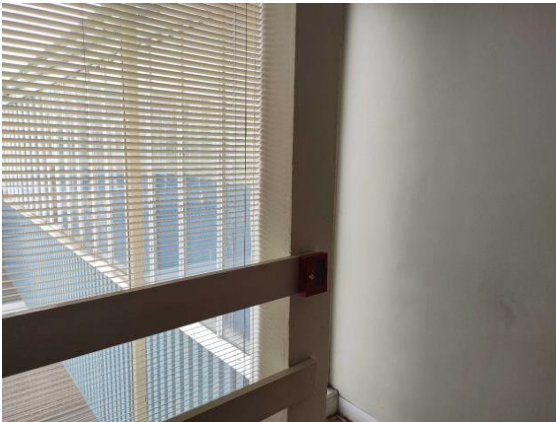


The high level horizontal boxing (insulating board) (Area: Second Floor, Room 58 Private Dining Room) contains asbestos.

Any change in its appearance should be recorded and passed to Property Services.

Photographs of Areas Sampled (Cont)

Item 160 Ref: 22-47230-50



The vertical boxing (insulating board) (Area: Second Floor, Room 58 Private Dining Room) contains asbestos.

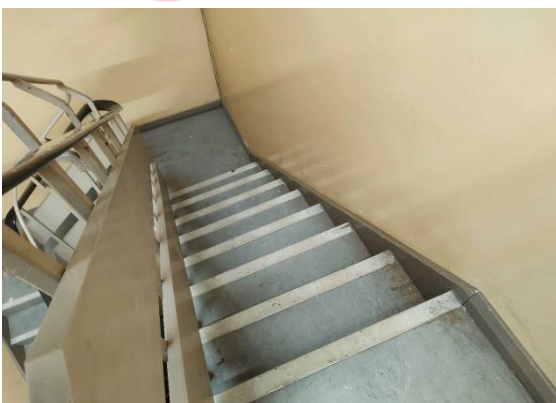
Any change in its appearance should be recorded and passed to Property Services.

Item 161 Ref: 22-47230-59



The floor (tiles & adhesive) (Area: Second Floor, Room 58 Private Dining Room) does not contain asbestos.

Item 162 Ref: 22-47230-84



The floor - stair nosings (composite) (Area: Second Floor, Room 5A Fire Exit Stairwell 4) contains asbestos.

Any change in its appearance should be recorded and passed to Property Services.

Photographs of Areas Sampled (Cont)

Item 163 Ref: 22-47230-50



The high level horizontal boxing (insulating board) (Area: Second Floor, Room 60 Store Room) contains asbestos.

Any change in its appearance should be recorded and passed to Property Services.

Item 164 Ref: 22-47230-56



The ceiling tiles (insulating board) (Area: Second Floor, Room 60 Store Room) contains asbestos.

Any change in its appearance should be recorded and passed to Property Services.

Item 165 Ref: 22-47230-60



The walls – fillet to top of wall (insulating board) (Area: Second Floor, Room 60 Store Room) contains asbestos.

Any change in its appearance should be recorded and passed to Property Services.

Photographs of Areas Sampled (Cont)

Item 166 Ref: 22-47230-60



The boxing – panel to pipe penetration (insulating board) (Area: Second Floor, Room 60 Store Room) contains asbestos.

Any change in its appearance should be recorded and passed to Property Services.

Item 167 Ref: 22-47230-60



The fillet to top of wall (insulating board) (Area: Second Floor, Room 60 Store Room) contains asbestos.

Any change in its appearance should be recorded and passed to Property Services.

Item 168 Ref: 22-47230-53



The infill panels – upstands to skylights (insulating board) (Area: Second Floor, Room 61 Corridor and Lift Lobby) contains asbestos.

Any change in its appearance should be recorded and passed to Property Services.

Photographs of Areas Sampled (Cont)

Item 169 Ref: 22-47230-56



The ceiling tiles (insulating board) (Area: Second Floor, Room 61 Corridor and Lift Lobby) contains asbestos.

Any change in its appearance should be recorded and passed to Property Services.

Item 170 Ref: 22-47230-56



The ceiling tiles (insulating board) (Area: Second Floor, Room 61 Corridor and Lift Lobby) contains asbestos.

Any change in its appearance should be recorded and passed to Property Services.

Item 171 Ref: 22-47230-61



The floor (tiles & adhesive) (Area: Second Floor, Room 61 Corridor and Lift Lobby) does not contain asbestos.

Photographs of Areas Sampled (Cont)

Item 172 Ref: 22-47230-62



The ceiling panel (insulating board) (Area: Second Floor, Room 61 Corridor and Lift Lobby) contains asbestos.

Any change in its appearance should be recorded and passed to Property Services.

Item 173 Ref: 22-47230-63



The high level horizontal boxing (insulating board) (Area: Second Floor, Room 61 Corridor and Lift Lobby) contains asbestos.

Any change in its appearance should be recorded and passed to Property Services.

Item 174 Ref: 22-47230-63



The vertical boxing (insulating board) (Area: Second Floor, Room 61 Corridor and Lift Lobby) contains asbestos.

Any change in its appearance should be recorded and passed to Property Services.

Photographs of Areas Sampled (Cont)

Item 175 Ref: 22-47230-33



The floor - stair nosings (composite) (Area: Second Floor, Room 63 Fire Exit Stairwell 3) contains asbestos.

Any change in its appearance should be recorded and passed to Property Services.

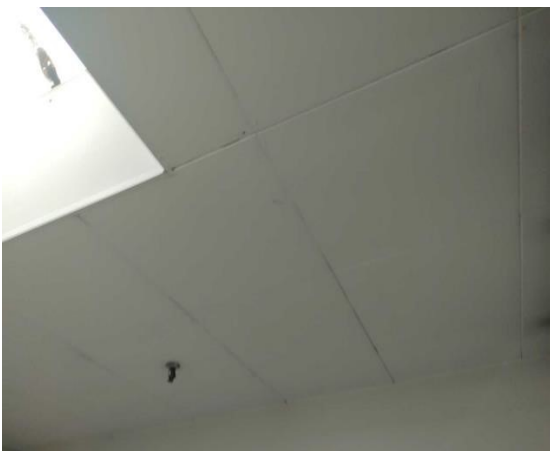
Item 176 Ref: 22-47230-53



The infill panels – upstands to skylights (insulating board) (Area: Second Floor, Room 63 Fire Exit Stairwell 3) contains asbestos.

Any change in its appearance should be recorded and passed to Property Services.

Item 177 Ref: 22-47230-56



The ceiling tiles (insulating board) (Area: Second Floor, Room 63 Fire Exit Stairwell 3) contains asbestos.

Any change in its appearance should be recorded and passed to Property Services.

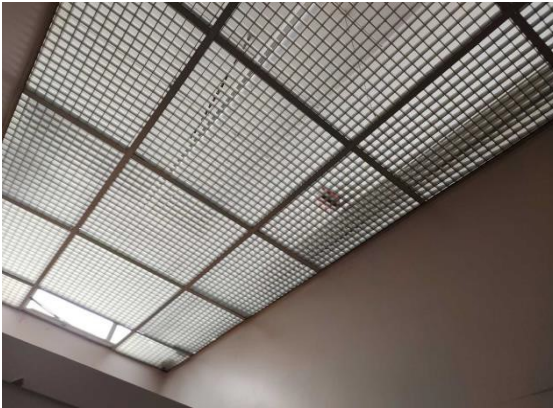
Photographs of Areas Sampled (Cont)

Item 178 Ref: 22-47230-64



The infill panels – door header panel (insulating board) (Area: Second Floor, Room 64 Link Bridge) does not contain asbestos.

Item 179 Ref: 22-47230-50



The high level horizontal boxing over RSJ's (insulating board) (Area: Second Floor, Room 65 Corridor 8) contains asbestos.

Any change in its appearance should be recorded and passed to Property Services.

Item 180 Ref: 22-47230-56

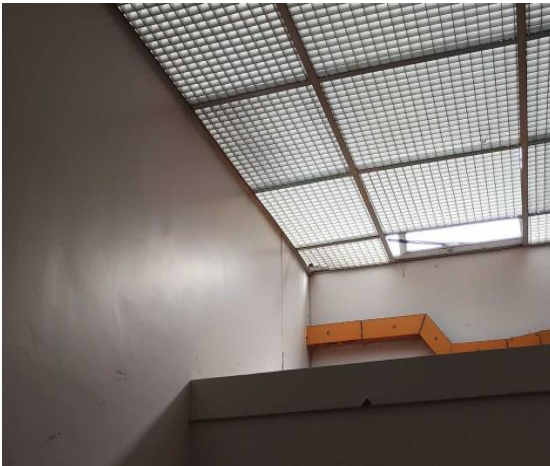


The ceiling tiles (insulating board) (Area: Second Floor, Room 65 Corridor 8) contains asbestos.

Any change in its appearance should be recorded and passed to Property Services.

Photographs of Areas Sampled (Cont)

Item 181 Ref: 22-47230-60



The infill panels – panel to pipe penetration (insulating board) (Area: Second Floor, Room 65 Corridor 8) contains asbestos.

Any change in its appearance should be recorded and passed to Property Services.

Item 182 Ref: 22-47230-61



The floor (tiles & adhesive) (Area: Second Floor, Room 65 Corridor 8) does not contain asbestos.

Item 183 Ref: 22-47230-65



The high level horizontal boxing (insulating board) (Area: Second Floor, Room 66 Electric Store 1) contains asbestos.

Any change in its appearance should be recorded and passed to Property Services.

Photographs of Areas Sampled (Cont)

Item 184 Ref: 22-47230-65



The vertical boxing (insulating board) (Area: Second Floor, Room 66 Electric Store 1) contains asbestos.

Any change in its appearance should be recorded and passed to Property Services.

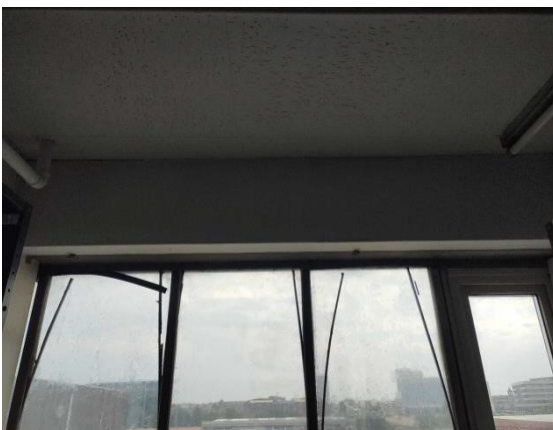
Item 185 Ref: 22-47230-66



The infill panels – panel behind radiator (insulating board) (Area: Second Floor, Room 66 Electric Store 1) contains asbestos.

Any change in its appearance should be recorded and passed to Property Services.

Item 186 Ref: 22-47230-65



The high level horizontal boxing (insulating board) (Area: Second Floor, Room 67 Electric Store 2) contains asbestos.

Any change in its appearance should be recorded and passed to Property Services.

Photographs of Areas Sampled (Cont)

Item 187 Ref: 22-47230-67



The floor (tiles & adhesive) (Area: Second Floor, Room 67 Electric Store 2) does not contain asbestos.

Item 188 Ref: 22-47230-65



The high level horizontal boxing (insulating board) (Area: Second Floor, Room 68 Electric Office) contains asbestos.

Any change in its appearance should be recorded and passed to Property Services.

Item 189 Ref: 22-47230-65



The vertical boxing (insulating board) (Area: Second Floor, Room 68 Electric Office) contains asbestos.

Any change in its appearance should be recorded and passed to Property Services.

Photographs of Areas Sampled (Cont)

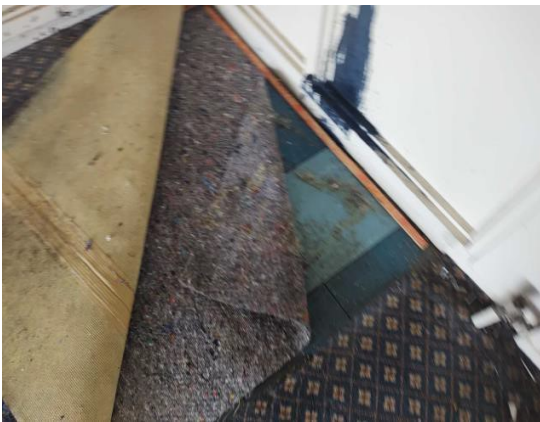
Item 190 Ref: 22-47230-66



The infill panels – panel behind 2x radiators (insulating board) (Area: Second Floor, Room 68 Electric Office) contains asbestos.

Any change in its appearance should be recorded and passed to Property Services.

Item 191 Ref: 22-47230-67



The floor (tiles & adhesive) (Area: Second Floor, Room 68 Electric Office) does not contain asbestos.

Item 192 Ref: 22-47230-68

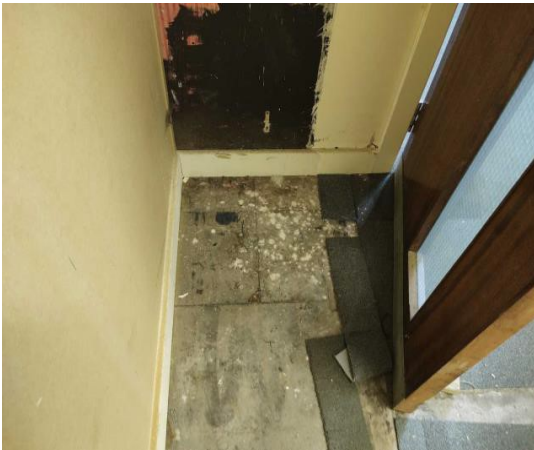


The walls – firebreak panels between RSJ and walls (insulating board) (Area: Second Floor, Room 68 Electric Office) contains asbestos.

Any change in its appearance should be recorded and passed to Property Services.

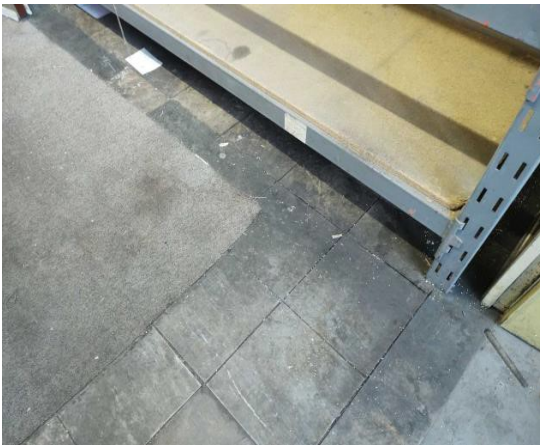
Photographs of Areas Sampled (Cont)

Item 193 Ref: 22-47230-69



The floor (tiles & adhesive)
(Area: Second Floor, Room 69
Store 3) does not contain
asbestos.

Item 194 Ref: 22-47230-69



The floor (tiles & adhesive)
(Area: Second Floor, Room 70
Filing Store) does not contain
asbestos.

Item 195 Ref: 22-47230-31



The ceiling tiles (insulating
board) (Area: Second Floor,
Room 71 Boiler Room)
contains asbestos.

Any change in its appearance
should be recorded and
passed to Property Services.

Photographs of Areas Sampled (Cont)

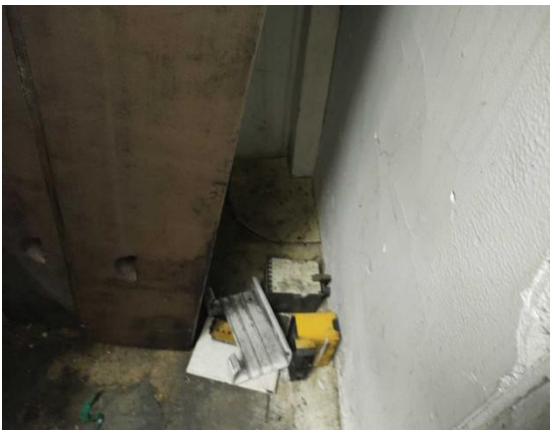
Item 196 Ref: 22-47230-34



The high level horizontal boxing (insulating board) (Area: Second Floor, Room 71 Boiler Room) contains asbestos.

Any change in its appearance should be recorded and passed to Property Services.

Item 197 Ref: 22-47230-43



The floor (tiles & adhesive) (Area: Second Floor, Room 71 Boiler Room) does not contain asbestos.

Item 198 Ref: 22-47230-44



The vessels – aircell lining to boiler (textile) (Area: Second Floor, Room 71 Boiler Room) contains asbestos.

Any change in its appearance should be recorded and passed to Property Services.

Photographs of Areas Sampled (Cont)

Item 199 Ref: 22-47230-44



The aircell lining to boiler casing (textile) (Area: Second Floor, Room 71 Boiler Room) contains asbestos.

Any change in its appearance should be recorded and passed to Property Services.

Item 200 Ref: 22-47230-45



The vessels – rope seal to door lining and viewing glass (textile) (Area: Second Floor, Room 71 Boiler Room) contains asbestos.

Any change in its appearance should be recorded and passed to Property Services.

Item 201 Ref: 22-47230-46



The vessels – debris to boiler (textile) (Area: Second Floor, Room 71 Boiler Room) contains asbestos.

Any change in its appearance should be recorded and passed to Property Services.

Photographs of Areas Sampled (Cont)

Item 202 Ref: 22-47230-31



The ceiling tiles (insulating board) (Area: Second Floor, Room 72 Tank Cupboard) contains asbestos.

Any change in its appearance should be recorded and passed to Property Services.

Item 203 Ref: 22-47230-31



The ceiling tiles (insulating board) (Area: Second Floor, Room 72 Tank Cupboard) contains asbestos.

Any change in its appearance should be recorded and passed to Property Services.

Item 204 Ref: 22-47230-34



The vertical boxing (insulating board) (Area: Second Floor, Room 72 Tank Cupboard) contains asbestos.

Any change in its appearance should be recorded and passed to Property Services.

Photographs of Areas Sampled (Cont)

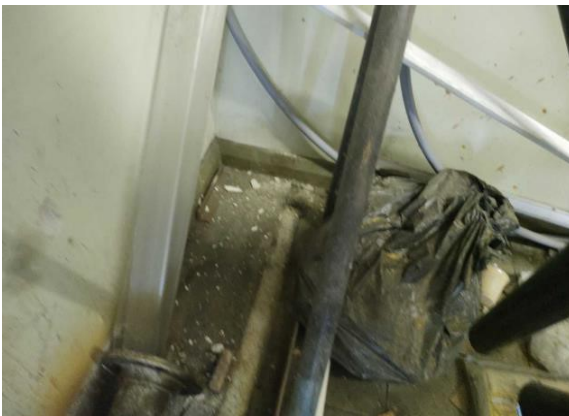
Item 205 Ref: 22-47230-47



The panel to ceiling (insulating board) (Area: Second Floor, Room 72 Tank Cupboard) contains asbestos.

Any change in its appearance should be recorded and passed to Property Services.

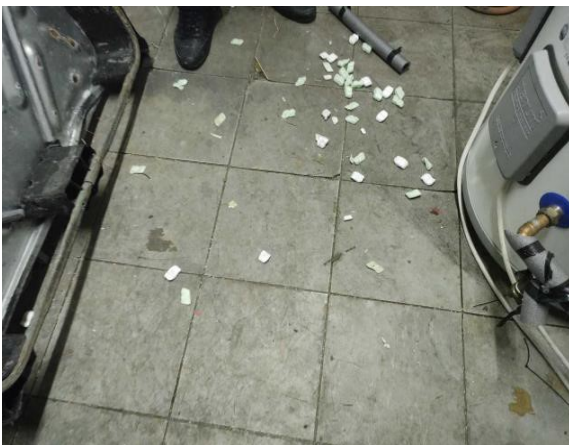
Item 206 Ref: 22-47230-47



The debris to floor (insulating board) (Area: Second Floor, Room 72 Tank Cupboard) contains asbestos.

Any change in its appearance should be recorded and passed to Property Services.

Item 207 Ref: 22-47230-48



The floor (tiles & adhesive) (Area: Second Floor, Room 72 Tank Cupboard) does not contain asbestos.

Photographs of Areas Sampled (Cont)

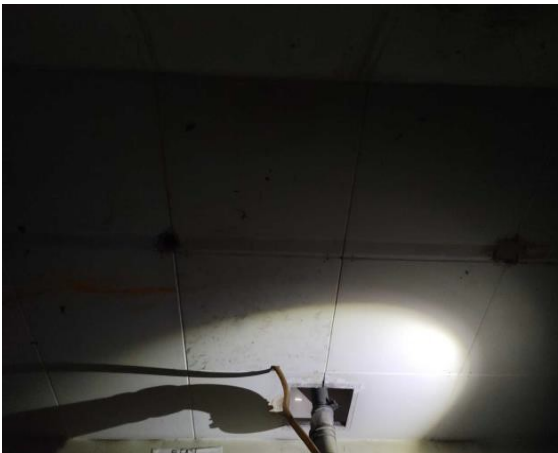
Item 208 Ref: 22-47230-18



The infill panels – extractor fan housing within ceiling void (insulating board) (Area: Second Floor, Room 73 Paint Store) contains asbestos.

Any change in its appearance should be recorded and passed to Property Services.

Item 209 Ref: 22-47230-31



The ceiling tiles (insulating board) (Area: Second Floor, Room 73 Paint Store) contains asbestos.

Any change in its appearance should be recorded and passed to Property Services.

Item 210 Ref: 22-47230-34



The high level horizontal boxing (insulating board) (Area: Second Floor, Room 73 Paint Store) contains asbestos.

Any change in its appearance should be recorded and passed to Property Services.

Photographs of Areas Sampled (Cont)

Item 211 Ref: 22-47230-18



The infill panels – extractor fan housing within ceiling void (insulating board) (Area: Second Floor, Room 74 Uniform Store) contains asbestos.

Any change in its appearance should be recorded and passed to Property Services.

Item 212 Ref: 22-47230-31



The ceiling tiles (insulating board) (Area: Second Floor, Room 74 Uniform Store) contains asbestos.

Any change in its appearance should be recorded and passed to Property Services.

Item 213 Ref: 22-47230-34

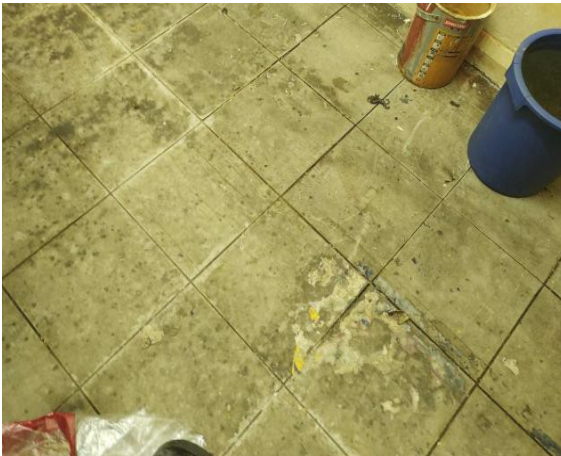


The high level horizontal boxing (insulating board) (Area: Second Floor, Room 74 Uniform Store) contains asbestos.

Any change in its appearance should be recorded and passed to Property Services.

Photographs of Areas Sampled (Cont)

Item 214 Ref: 22-47230-48



The floor (tiles & adhesive)
(Area: Second Floor, Room 74
Uniform Store) does not
contain asbestos.

Item 215 Ref: 22-47230-49



The debris to floor (insulating
board) (Area: Second Floor,
Room 74 Uniform Store) does
not contain asbestos.

Item 216 Ref: 22-47230-70



The pipes – gasket residues
to open pipe flange (gasket)
(Area: Second Floor, Room 75
Main Workshop) contains
asbestos.

Any change in its appearance
should be recorded and
passed to Property Services.

Photographs of Areas Sampled (Cont)

Item 217 Ref: 22-47230-71



The high level horizontal boxing (insulating board) (Area: Second Floor, Room 75 Main Workshop) contains asbestos.

Any change in its appearance should be recorded and passed to Property Services.

Item 218 Ref: 22-47230-71



The vertical boxing (insulating board) (Area: Second Floor, Room 75 Main Workshop) contains asbestos.

Any change in its appearance should be recorded and passed to Property Services.

Item 219 Ref: 22-47230-71



The walls – high level panels to walls (insulating board) (Area: Second Floor, Room 75 Main Workshop) contains asbestos.

Any change in its appearance should be recorded and passed to Property Services.

Photographs of Areas Sampled (Cont)

Item 220 Ref: 22-47230-72



The debris to floor adjacent convector heater (insulating board) (Area: Second Floor, Room 75 Main Workshop) contains asbestos.

Any change in its appearance should be recorded and passed to Property Services.

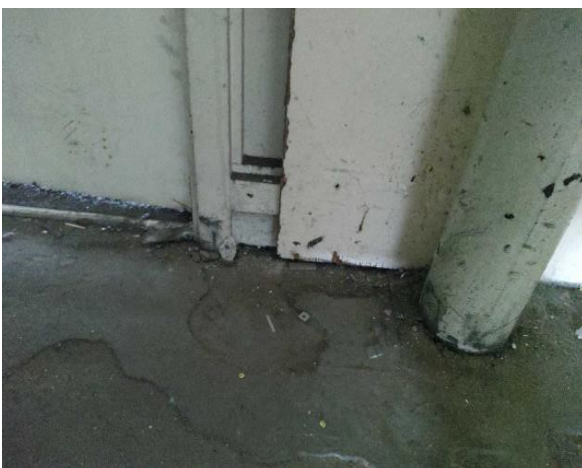
Item 221 Ref: 22-47230-72



The loose lying panel behind convector heater (insulating board) (Area: Second Floor, Room 75 Main Workshop) contains asbestos.

Any change in its appearance should be recorded and passed to Property Services.

Item 222 Ref: 22-47230-72



The debris to floor adjacent Electric Office (insulating board) (Area: Second Floor, Room 75 Main Workshop) contains asbestos.

Any change in its appearance should be recorded and passed to Property Services.

Photographs of Areas Sampled (Cont)

Item 223 Ref: 22-47230-73



The floor (tiles & adhesive) (Area: Second Floor, Room 75 Main Workshop) does not contain asbestos.

Item 224 Ref: 22-47230-74



The electrical equipment – gasket to rear of heater (gasket) (Area: Second Floor, Room 75 Main Workshop) does not contain asbestos.

Item 225 Ref: 22-47230-75



The loose panels within conduits (used as fascia screw panels) (insulating board) (Area: Second Floor, Room 75 Main Workshop) contains asbestos.

Any change in its appearance should be recorded and passed to Property Services.

Photographs of Areas Sampled (Cont)

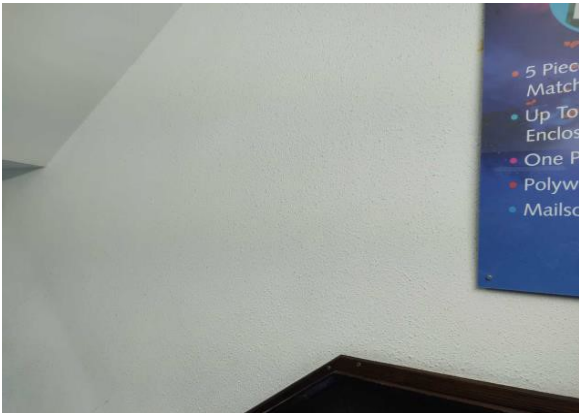
Item 226 Ref: 22-47230-76



The debris to top of doorway bulkhead (insulating board) (Area: Second Floor, Room 75 Main Workshop) contains asbestos.

Any change in its appearance should be recorded and passed to Property Services.

Item 227 Ref: 22-47230-80



The walls (render) (Area: First Floor, Room 76 Main Stairwell) does not contain asbestos.

Item 228 Ref: 22-47230-81



The ceiling (textured coating) (Area: First Floor, Room 80 Squash Court Changing Room) does not contain asbestos.

Photographs of Areas Sampled (Cont)

Item 229 Ref: 22-47230-82



The floor (tiles & adhesive)
(Area: First Floor, Room 80
Squash Court Changing
Room) contains asbestos.

Any change in its appearance
should be recorded and
passed to Property Services.

Item 230 Ref: 22-47230-83



The walls – ceramic tile
adhesive (adhesive) (Area:
First Floor, Room 80 Squash
Court Changing Room) does
not contain asbestos.

Item 231 Ref: 22-47230-75



The boxing to high level
beams (insulating board)
(Area: First Floor, Room 81
Squash Court) contains
asbestos.

Any change in its appearance
should be recorded and
passed to Property Services.

Photographs of Areas Sampled (Cont)

Item 232 Ref: 22-47230-82



The floor (tiles & adhesive)
(Area: First Floor, Room 82
Squash Court Lobby and
Stairs) contains asbestos.

Any change in its appearance
should be recorded and
passed to Property Services.

Item 233 Ref: 22-47230-85



The floor – stair nosings
(composite) (Area: First Floor,
Room 83 Stairwell) contains
asbestos.

Any change in its appearance
should be recorded and
passed to Property Services.

Item 234 Ref: 22-47230-85



The ceiling (insulating board)
(Area: First Floor, Room 84
Maintenance Workshop)
contains asbestos.

Any change in its appearance
should be recorded and
passed to Property Services.

Photographs of Areas Sampled (Cont)

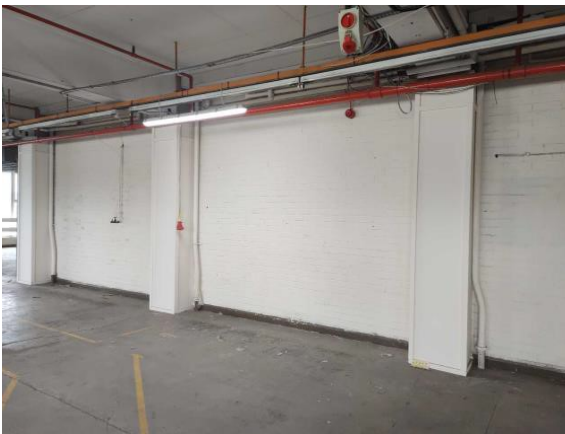
Item 235 Ref: 22-47230-86



The high level horizontal boxing (insulating board) (Area: First Floor, Room 84 Maintenance Workshop) contains asbestos.

Any change in its appearance should be recorded and passed to Property Services.

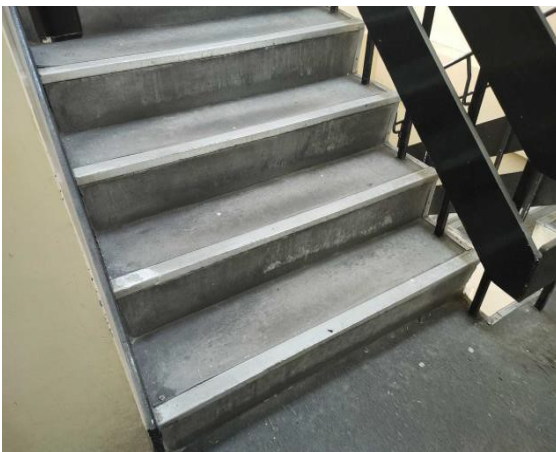
Item 236 Ref: 22-47230-86



The vertical boxing (insulating board) (Area: First Floor, Room 84 Maintenance Workshop) contains asbestos.

Any change in its appearance should be recorded and passed to Property Services.

Item 237 Ref: 22-47230-84



The floor – stair nosings (composite) (Area: First Floor, Room 85 Fire Exit Stairwell 1) contains asbestos.

Any change in its appearance should be recorded and passed to Property Services.

Photographs of Areas Sampled (Cont)

Item 238 Ref: 22-47230-38



The rope seal to incinerator (textile) (Area: First Floor, Room 86 Female WC and Lobby) contains asbestos.

Any change in its appearance should be recorded and passed to Property Services.

Item 239 Ref: 22-47230-39



The pad to opening hatch (insulating board) (Area: First Floor, Room 86 Female WC and Lobby) contains asbestos.

Any change in its appearance should be recorded and passed to Property Services.

Item 240 Ref: 22-47230-40



The internal lining to incinerator (insulating board) (Area: First Floor, Room 86 Female WC and Lobby) contains asbestos.

Any change in its appearance should be recorded and passed to Property Services.

Photographs of Areas Sampled (Cont)

Item 241 Ref: 22-47230-41



The flue (cement) (Area: First Floor, Room 86 Female WC and Lobby) contains asbestos.

Any change in its appearance should be recorded and passed to Property Services.

Item 242 Ref: 22-47230-85



The ceiling (insulating board) (Area: First Floor, Room 86 Female WC and Lobby) contains asbestos.

Any change in its appearance should be recorded and passed to Property Services.

Item 243 Ref: 22-47230-86



The high level horizontal boxing (insulating board) (Area: First Floor, Room 86 Female WC and Lobby) contains asbestos.

Any change in its appearance should be recorded and passed to Property Services.

Photographs of Areas Sampled (Cont)

Item 244 Ref: 22-47230-86



The vertical boxing (insulating board) (Area: First Floor, Room 86 Female WC and Lobby) contains asbestos.

Any change in its appearance should be recorded and passed to Property Services.

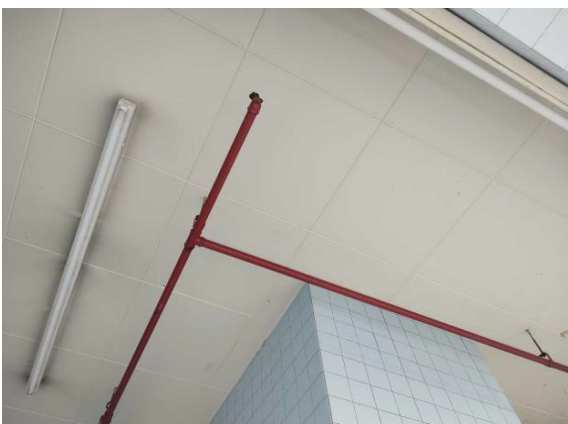
Item 245 Ref: 22-47230-86



The infill panels – lining to vertical boxing housing flue (insulating board) (Area: First Floor, Room 86 Female WC and Lobby) contains asbestos.

Any change in its appearance should be recorded and passed to Property Services.

Item 246 Ref: 22-47230-85



The ceiling (insulating board) (Area: First Floor, Room 87 Male WC and Lobby) contains asbestos.

Any change in its appearance should be recorded and passed to Property Services.

Photographs of Areas Sampled (Cont)

Item 247 Ref: 22-47230-86



The high level horizontal boxing (insulating board) (Area: First Floor, Room 87 Male WC and Lobby) contains asbestos.

Any change in its appearance should be recorded and passed to Property Services.

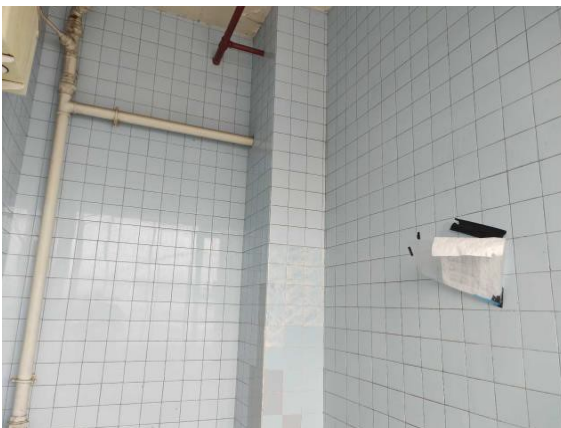
Item 248 Ref: 22-47230-86



The vertical boxing (behind ceramic tiles) (insulating board) (Area: First Floor, Room 87 Male WC and Lobby) contains asbestos.

Any change in its appearance should be recorded and passed to Property Services.

Item 249 Ref: 22-47230-86



The infill panels – lining to vertical boxing pipework (insulating board) (Area: First Floor, Room 87 Male WC and Lobby) contains asbestos.

Any change in its appearance should be recorded and passed to Property Services.

Photographs of Areas Sampled (Cont)

Item 250 Ref: 22-47230-84



The floor – stair nosings (composite) (Area: First Floor, Room 88 Fire Exit Stairwell 2) contains asbestos.

Any change in its appearance should be recorded and passed to Property Services.

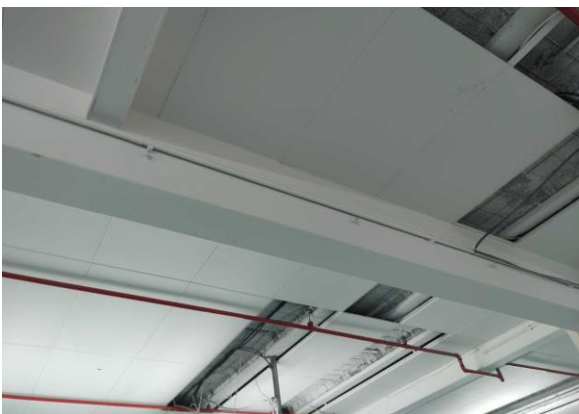
Item 251 Ref: 22-47230-85



The ceiling (insulating board) (Area: First Floor, Room 90 Print Room) contains asbestos.

Any change in its appearance should be recorded and passed to Property Services.

Item 252 Ref: 22-47230-86



The high level horizontal boxing (insulating board) (Area: First Floor, Room 90 Print Room) contains asbestos.

Any change in its appearance should be recorded and passed to Property Services.

Photographs of Areas Sampled (Cont)

Item 253 Ref: 22-47230-86



The vertical boxing (insulating board) (Area: First Floor, Room 90 Print Room) contains asbestos.

Any change in its appearance should be recorded and passed to Property Services.

Item 254 Ref: 22-47230-85



The ceiling (insulating board) (Area: First Floor, Room 91 Design Room) contains asbestos.

Any change in its appearance should be recorded and passed to Property Services.

Item 255 Ref: 22-47230-86



The high level horizontal boxing (insulating board) (Area: First Floor, Room 91 Design Room) contains asbestos.

Any change in its appearance should be recorded and passed to Property Services.

Photographs of Areas Sampled (Cont)

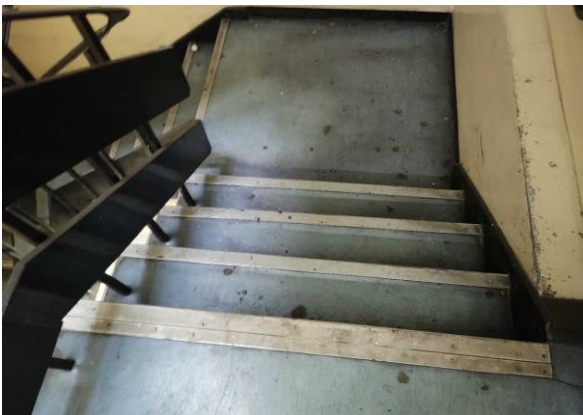
Item 256 Ref: 22-47230-86



The vertical boxing (insulating board) (Area: First Floor, Room 91 Design Room) contains asbestos.

Any change in its appearance should be recorded and passed to Property Services.

Item 257 Ref: 22-47230-84



The floor – stair nosings (composite) (Area: First Floor, Room 93 Fire Exit Stairwell 3) contains asbestos.

Any change in its appearance should be recorded and passed to Property Services.

Item 258 Ref: 22-47230-87



The ceiling tiles (insulating board) (Area: First Floor, Room 95 Main Printer Workshop) contains asbestos.

Any change in its appearance should be recorded and passed to Property Services.

Photographs of Areas Sampled (Cont)

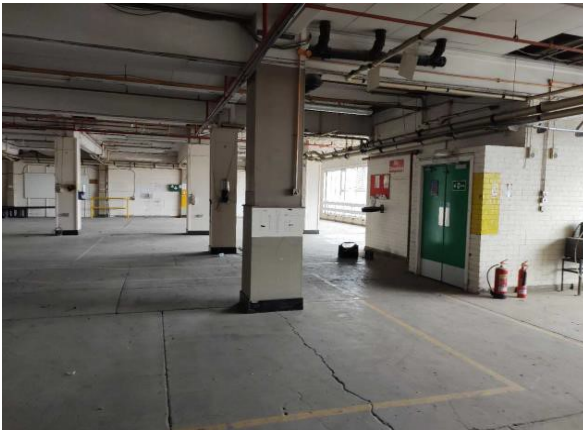
Item 259 Ref: 22-47230-88



The high level horizontal boxing (insulating board) (Area: First Floor, Room 95 Main Printer Workshop) contains asbestos.

Any change in its appearance should be recorded and passed to Property Services.

Item 260 Ref: 22-47230-88



The vertical boxing (insulating board) (Area: First Floor, Room 95 Main Printer Workshop) contains asbestos.

Any change in its appearance should be recorded and passed to Property Services.

Item 261 Ref: 22-47230-89



The boxing to heater flue (insulating board) (Area: First Floor, Room 95 Main Printer Workshop) contains asbestos.

Any change in its appearance should be recorded and passed to Property Services.

Photographs of Areas Sampled (Cont)

Item 262 Ref: 22-47230-89



The loose boards within trunking (used as screw boards for fascia) (insulating board) (Area: First Floor, Room 95 Main Printer Workshop) contains asbestos.

Any change in its appearance should be recorded and passed to Property Services.

Item 263 Ref: 22-47230-90



The vessels – gasket to boiler (textile) (Area: First Floor, Room 95 Main Printer Workshop) contains asbestos.

Any change in its appearance should be recorded and passed to Property Services.

Item 264 Ref: 22-47230-91



The infill panels – door header above store (79) (insulating board) (Area: First Floor, Room 95 Main Printer Workshop) contains asbestos.

Any change in its appearance should be recorded and passed to Property Services.

Photographs of Areas Sampled (Cont)

Item 265 Ref: 22-47230-91



The infill panels – door header above store (78) (insulating board) (Area: First Floor, Room 95 Main Printer Workshop) contains asbestos.

Any change in its appearance should be recorded and passed to Property Services.

Item 266 Ref: 22-47230-92



The walls (render) (Area: Ground Floor, Room 96 Entrance Lobby) does not contain asbestos.

Item 267 Ref: 22-47230-93



The high level horizontal boxing (insulating board) (Area: Ground Floor, Room 98 Lift Motor Room) contains asbestos.

Any change in its appearance should be recorded and passed to Property Services.

Photographs of Areas Sampled (Cont)

Item 268 Ref: 22-47230-93



The high level horizontal boxing (insulating board) (Area: Ground Floor, Room 99 Office 1) contains asbestos.

Any change in its appearance should be recorded and passed to Property Services.

Item 269 Ref: 22-47230-93



The high level horizontal boxing (insulating board) (Area: Ground Floor, Room 101 Maintenance Workshop) contains asbestos.

Any change in its appearance should be recorded and passed to Property Services.

Item 270 Ref: 22-47230-94p



The vessels – presumed gasket within Sadia water heater (gasket) (Area: Ground Floor, Room 101 Maintenance Workshop) is presumed to contain asbestos.

Any change in its appearance should be recorded and passed to Property Services.

Photographs of Areas Sampled (Cont)

Item 271 Ref: 22-47230-93



The high level horizontal boxing (insulating board) (Area: Ground Floor, Room 102 Maintenance Workshop 2) contains asbestos.

Any change in its appearance should be recorded and passed to Property Services.

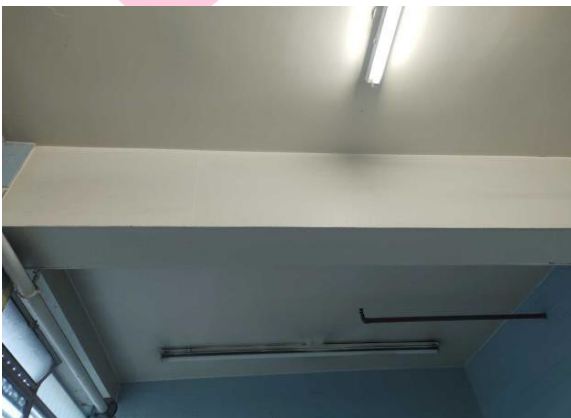
Item 272 Ref: 22-47230-93



The high level horizontal boxing (insulating board) (Area: Ground Floor, Room 104 Electric Store Room) contains asbestos.

Any change in its appearance should be recorded and passed to Property Services.

Item 273 Ref: 22-47230-93



The high level horizontal boxing (insulating board) (Area: Ground Floor, Room 105 Female WC and Lobby) contains asbestos.

Any change in its appearance should be recorded and passed to Property Services.

Photographs of Areas Sampled (Cont)

Item 274 Ref: 22-47230-95



The flue (cement) (Area: Ground Floor, Room 105 Female WC and Lobby) contains asbestos.

Any change in its appearance should be recorded and passed to Property Services.

Item 275 Ref: 22-47230-96



The surround to hatch and burner (millboard) (Area: Ground Floor, Room 105 Female WC and Lobby) contains asbestos.

Any change in its appearance should be recorded and passed to Property Services.

Item 276 Ref: 22-47230-97



The lining to incinerator unit (insulating board) (Area: Ground Floor, Room 105 Female WC and Lobby) contains asbestos.

Any change in its appearance should be recorded and passed to Property Services.

Photographs of Areas Sampled (Cont)

Item 277 Ref: 22-47230-93



The high level horizontal boxing (insulating board) (Area: Ground Floor, Room 106 Male WC and Lobby) contains asbestos.

Any change in its appearance should be recorded and passed to Property Services.

Item 278 Ref: 22-47230-93



The vertical boxing (insulating board) (Area: Ground Floor, Room 106 Male WC and Lobby) contains asbestos.

Any change in its appearance should be recorded and passed to Property Services.

Item 279 Ref: 22-47230-98



The electrical equipment – panels between square D isolating box (bakelite) (Area: Ground Floor, Room 109 Switch Room) does not contain asbestos.

Photographs of Areas Sampled (Cont)

Item 280 Ref: 22-47230-100



The vessels – gasket to heater (Area: Ground Floor, Room 110 Gas Intake / Heater Area) does not contain asbestos.

Item 281 Ref: 22-47230-101



The high level horizontal boxing (insulating board) (Area: Ground Floor, Room 110 Gas Intake / Heater Area) contains asbestos.

Any change in its appearance should be recorded and passed to Property Services.

Item 282 Ref: 22-47230-101



The high level horizontal boxing (insulating board) (Area: Ground Floor, Room 110 Gas Intake / Heater Area) contains asbestos.

Any change in its appearance should be recorded and passed to Property Services.

Photographs of Areas Sampled (Cont)

Item 283 Ref: 22-47230-93



The high level horizontal boxing (insulating board) (Area: Ground Floor, Room 111 Photo Production Area) contains asbestos.

Any change in its appearance should be recorded and passed to Property Services.

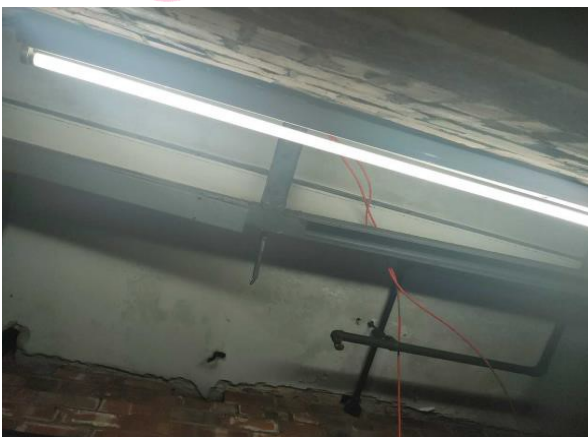
Item 284 Ref: 22-47230-99



The floor – stair nosing (composite) (Area: Ground Floor, Room 112 Fire Exit Lobby) contains asbestos.

Any change in its appearance should be recorded and passed to Property Services.

Item 285 Ref: 22-47230-101



The high level horizontal boxing (insulating board) (Area: Ground Floor, Room 114 Lift Motor Room 2) contains asbestos.

Any change in its appearance should be recorded and passed to Property Services.

Photographs of Areas Sampled (Cont)

Item 286 Ref: 22-47230-101



The high level horizontal boxing (insulating board) (Area: Ground Floor, Room 115 Sprinkler Outlet Room) contains asbestos.

Any change in its appearance should be recorded and passed to Property Services.

Item 287 Ref: 22-47230-102



The pipes (gasket) (Area: Ground Floor, Room 115 Sprinkler Outlet Room) does not contain asbestos.

Item 288 Ref: 22-47230-101



The high level horizontal boxing (insulating board) (Area: Ground Floor, Room 116 Plate Room) contains asbestos.

Any change in its appearance should be recorded and passed to Property Services.

Photographs of Areas Sampled (Cont)

Item 289 Ref: 22-47230-103



The pads to battery tester (insulating board) (Area: Ground Floor, Room 116 Plate Room) does not contain asbestos.

Item 290 Ref: 22-47230-101



The high level horizontal boxing (insulating board) (Area: Ground Floor, Room 117 Store Room) contains asbestos.

Any change in its appearance should be recorded and passed to Property Services.

Item 291 Ref: 22-47230-101

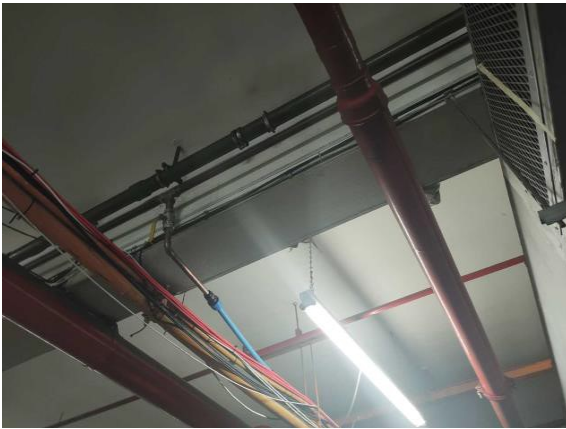


The high level horizontal boxing (insulating board) (Area: Ground Floor, Room 118 Security Room) contains asbestos.

Any change in its appearance should be recorded and passed to Property Services.

Photographs of Areas Sampled (Cont)

Item 292 Ref: 22-47230-104



The high level horizontal boxing (insulating board) (Area: Ground Floor, Room 119 Main Factory Floor) contains asbestos.

Any change in its appearance should be recorded and passed to Property Services.

Item 293 Ref: 22-47230-104



The horizontal boxing above former wall (insulating board) (Area: Ground Floor, Room 119 Main Factory Floor) contains asbestos.

Any change in its appearance should be recorded and passed to Property Services.

Item 294 Ref: 22-47230-105



The sealing mastic to ducting joints (mastic) (Area: Ground Floor, Room 119 Main Factory Floor) contains asbestos.

Any change in its appearance should be recorded and passed to Property Services.

Photographs of Areas Sampled (Cont)

Item 295 Ref: 22-47230-106



The floor – tiles to section left rear of factory floor (tiles and adhesive) (Area: Ground Floor, Room 119 Main Factory Floor) does not contain asbestos.

Item 296 Ref: 22-47230-107



The debris to horizontal timber boxing (insulating board) (Area: Ground Floor, Room 119 Main Factory Floor) contains asbestos.

Any change in its appearance should be recorded and passed to Property Services.

Item 297 Ref: 22-47230-108



The high level horizontal boxing (insulating board) (Area: Ground Floor, Room 122 Vehicle Bay 1) contains asbestos.

Any change in its appearance should be recorded and passed to Property Services.

Photographs of Areas Sampled (Cont)

Item 298 Ref: 22-47230-108



The high level horizontal boxing (insulating board) (Area: Ground Floor, Room 123: Office) contains asbestos.

Any change in its appearance should be recorded and passed to Property Services.

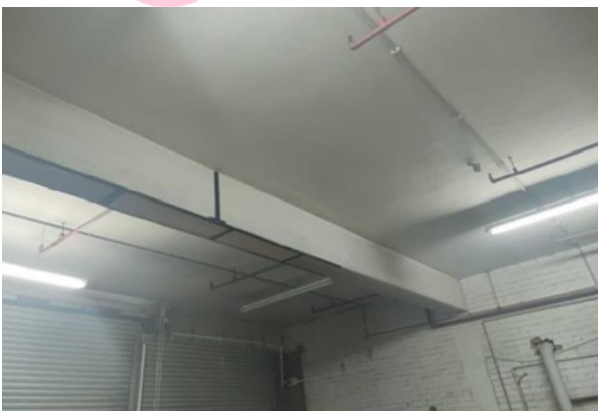
Item 299 Ref: 22-47230-108



The high level horizontal boxing (insulating board) (Area: Ground Floor, Room 124: Office 2) contains asbestos.

Any change in its appearance should be recorded and passed to Property Services.

Item 300 Ref: 22-47230-108

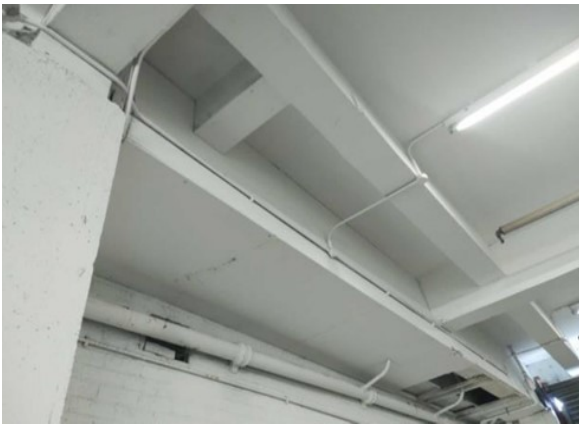


The high level horizontal boxing (insulating board) (Area: Ground Floor, Room 126 Vehicle Bay 2) contains asbestos.

Any change in its appearance should be recorded and passed to Property Services.

Photographs of Areas Sampled (Cont)

Item 301 Ref: 22-47230-108



The high level horizontal beam boxing (insulating board) (Area: Ground Floor, Room 127: Vehicle Bay 3) contains asbestos.

Any change in its appearance should be recorded and passed to Property Services.

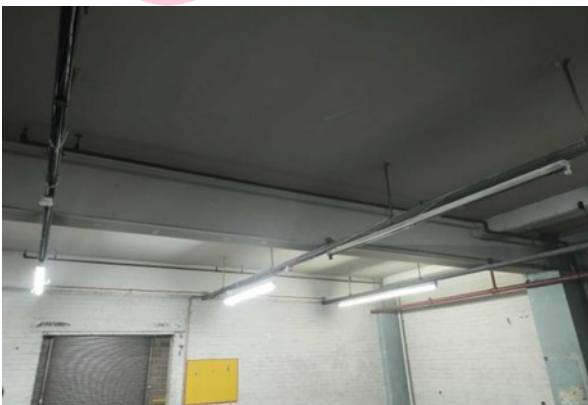
Item 302 Ref: 22-47230-108



The high level bulkhead boxing (insulating board) (Area: Ground Floor, Room 127: Vehicle Bay 3) contains asbestos.

Any change in its appearance should be recorded and passed to Property Services.

Item 303 Ref: 22-47230-108



The high level horizontal boxing (insulating board) (Area: Ground Floor, Room 129 Vehicle Maintenance Area) contains asbestos.

Any change in its appearance should be recorded and passed to Property Services.

Photographs of Areas Sampled (Cont)

Item 304 Ref: Presumed



The packers below metal flue in pipe penetration behind convector heater (Area: Ground Floor, Room 129: Vehicle Maintenance Area) contains asbestos.

Any change in its appearance should be recorded and passed to Property Services.

Item 305 Ref: 22-47230-110



The mastic to the ductwork (Area: Ground Floor, Room 129: Vehicle Maintenance Area) does not contain asbestos.

Item 306 Ref: 22-47230-111



The gasket to Benson convector heater boiler (Area: Ground Floor, Room 129: Vehicle Maintenance Area) does not contain asbestos.

Photographs of Areas Sampled (Cont)

Item 307 Ref: 22-47230-112



The internal gasket to Benson convector heater boiler (Area: Ground Floor, Room 129: Vehicle Maintenance Area) does not contain asbestos.

Item 308 Ref: 22-47230-113



The expansion putty to floor (Area: Ground Floor, Room 129: Vehicle Maintenance Area) does not contain asbestos.

Item 309 Ref: 22-47230-108



The high level horizontal boxing (insulating board) (Area: Ground Floor, Room 130 Vehicle Bay 4) contains asbestos.

Any change in its appearance should be recorded and passed to Property Services.

Photographs of Areas Sampled (Cont)

Item 310 Ref: 22-47230-113



The expansion putty to floor (Area: Ground Floor, Room 130: Vehicle Bay 4) does not contain asbestos.

Item 311 Ref: 22-47230-114



The packer to flue penetration (insulating board) (Area: Ground Floor, Room 131 Vehicle Bay 4 (Unit B)) contains asbestos.

Any change in its appearance should be recorded and passed to Property Services.

Item 312 Ref: 22-47230-115



The original roof below new external metal roof (Area: Ground Floor, Room 131 Vehicle Bay 4 (Unit B)) contains asbestos.

Any change in its appearance should be recorded and passed to Property Services.

Photographs of Areas Sampled (Cont)

Item 313 Ref: 22-47230-116



The cement debris to floor around perimeter (Area: Ground Floor, Room 131: Vehicle Bay 4 (Unit B)) does not contain asbestos.

Item 314 Ref: 22-47230-117



The flashpad used as packer within cable trunking (Area: Ground Floor, Room 131 Vehicle Bay 4 (Unit B)) contains asbestos.

Any change in its appearance should be recorded and passed to Property Services.

Item 315 Ref: 22-47230-118



The loose board sitting in trunking (Insulating board) (Area: Ground Floor, Room 131 Vehicle Bay 4 (Unit B)) does not contain asbestos.

Photographs of Areas Sampled (Cont)

Item 316 Ref: 22-47230-119



The floor (Area: Ground Floor, Room 137: Former WC 2) contains asbestos.

Any change in its appearance should be recorded and passed to Property Services.

Item 317 Ref: 22-47230-119



The floor (Area: Ground Floor, Room 139: Exit Lobby) contains asbestos.

Any change in its appearance should be recorded and passed to Property Services.

Item 318 Ref: 22-47230-119



The floor (Area: Ground Floor, Room 141: Office) contains asbestos.

Any change in its appearance should be recorded and passed to Property Services.

Photographs of Areas Sampled (Cont)

Item 319 Ref: 22-47230-119



The floor (Area: Ground Floor, Room 142: Office) contains asbestos.

Any change in its appearance should be recorded and passed to Property Services.

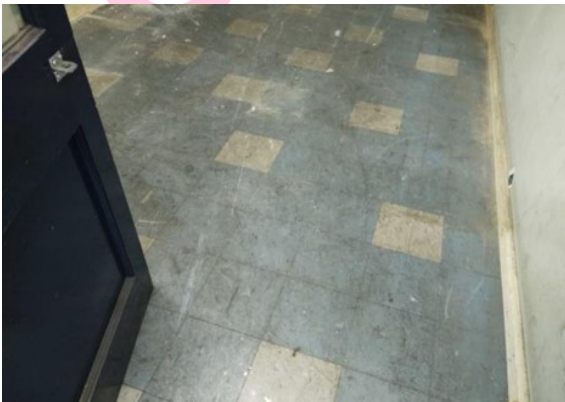
Item 320 Ref: 22-47230-119



The floor (Area: Ground Floor, Room 143: Staff Room) contains asbestos.

Any change in its appearance should be recorded and passed to Property Services.

Item 321 Ref: 22-47230-119



The floor (Area: Ground Floor, Room 144: Store Room) contains asbestos.

Any change in its appearance should be recorded and passed to Property Services.

Photographs of Areas Sampled (Cont)

Item 322 Ref: 22-47230-119



The floor (Area: Ground Floor, Room 144: Store Room) contains asbestos.

Any change in its appearance should be recorded and passed to Property Services.

Item 323 Ref: 22-47230-119



The floor (Area: Ground Floor, Room 145: Corridor) contains asbestos.

Any change in its appearance should be recorded and passed to Property Services.

Item 324 Ref: 22-47230-120

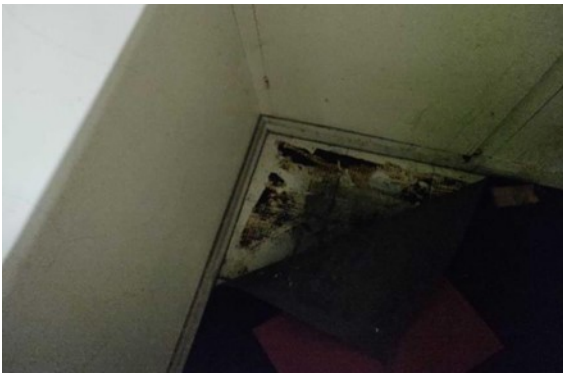


The floor tiles and adhesive (Area: Ground Floor, Room 146: Store Cupboard) contains asbestos.

Any change in its appearance should be recorded and passed to Property Services.

Photographs of Areas Sampled (Cont)

Item 325 Ref: 22-47230-119



The floor (Area: Ground Floor, Room 147: Kitchenette) contains asbestos.

Any change in its appearance should be recorded and passed to Property Services.

Item 326 Ref: 22-47230-121



The flue from former sanitary incinerator (Area: Ground Floor, Room 148: Staff WC) contains asbestos.

Any change in its appearance should be recorded and passed to Property Services.

Item 327 Ref: 22-47230-77



The debris to the floor adjacent to oil tank (Area: Room 149: Floor Roof) contains asbestos.

Any change in its appearance should be recorded and passed to Property Services.

Photographs of Areas Sampled (Cont)

Item 328 Ref: 22-47230-78



The flue and cowls (Area: Room 149: Floor Roof) contains asbestos.

Any change in its appearance should be recorded and passed to Property Services.

Item 329 Ref: 22-47230-79



The felt to the roof (Area: Room 149: Floor Roof) does not contain asbestos.

Item 330 Ref: 22-47230-77



The loose lying panels (Insulating board) (Area: Floor roof, Room 150: Header tank room) contains asbestos.

Any change in its appearance should be recorded and passed to Property Services.

Photographs of Areas Sampled (Cont)

Item 331 Ref: 22-47230-78



The flue (Area: Floor roof, Room 150: Header tank room) contains asbestos.

Any change in its appearance should be recorded and passed to Property Services.

Item 332 Ref: 22-47230-122



The rainwater goods to block 1B gable end (Area: Floor 0, Room 152: External) contains asbestos.

Any change in its appearance should be recorded and passed to Property Services.

Item 333 Ref: 22-47230-123



The rainwater goods jointing compound between cement gutters to block 1B gable end (Area: Floor 0, Room 152: External) contains asbestos.

Any change in its appearance should be recorded and passed to Property Services.

Photographs of Areas Sampled (Cont)

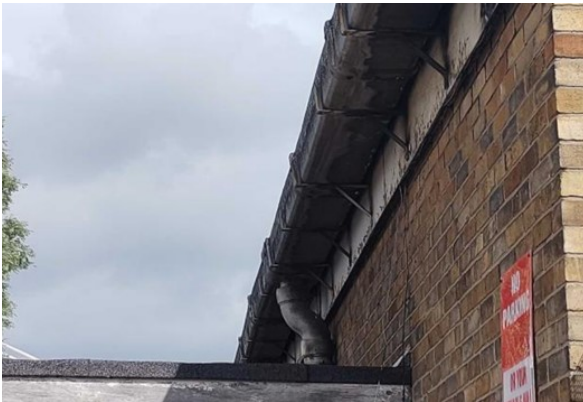
Item 334 Ref: 22-47230-124



The fascia cement behind metal profile to block 1B gable end (Area: Floor 0, Room 152: External) contains asbestos.

Any change in its appearance should be recorded and passed to Property Services.

Item 335 Ref: 22-47230-125



The downpipes to block 1B gable end (Area: Floor 0, Room 152: External) contains asbestos.

Any change in its appearance should be recorded and passed to Property Services.

Item 336 Ref: 22-47230-127



The damp proof to walls above flat roof to 1C (Area: Floor 0, Room 152: External) do not contain asbestos.

Photographs of Areas Sampled (Cont)

Item 337 Ref: 22-47230-127



The window mastic to pvc windows on Block 1A (Area: Floor 0, Room 152: External) do not contain asbestos.

Item 338 Ref: 22-47230-128



The render to concrete entrance canopy (Area: Floor 0, Room 152: External) do not contain asbestos.

Item 339 Ref: 22-47230-129



The debris to path at front elevation (Insulating board) (Area: Floor roof, Room 150: Header tank room) contains asbestos.

Removed as sample

Photographs of Areas Sampled (Cont)

Item 340 Ref: 22-47230-130



The mastic to timber door frames (Area: Floor 0, Room 152: External) contains asbestos.

Any change in its appearance should be recorded and passed to Property Services.

Item 341 Ref: 22-47230-131



The damp proof course to Block 1A (Area: Floor 0, Room 152: External) contains asbestos.

Any change in its appearance should be recorded and passed to Property Services.

Item 342 Ref: 22-47230-132



The down pipes to gable end (Area: Floor 0, Room 152: External) contains asbestos.

Any change in its appearance should be recorded and passed to Property Services.

Photographs of Areas Sampled (Cont)

Item 343 Ref: 22-47230-133



The downpipe debris under sampled downpipe (Area: Floor 0, Room 152: External) contains asbestos.

Any change in its appearance should be recorded and passed to Property Services.

Item 344 Ref: 22-47230-20



The fire breaks to tops of wall outside female wc (Area: Second Floor, Room 26a: Tank room (within ceiling void)) contains asbestos.

Any change in its appearance should be recorded and passed to Property Services.

Item 345 Ref: 22-47230-20



The boxing to RSJ's (insulating Board) (Area: Second Floor, Room 26a: Tank room (within ceiling void)) contains asbestos.

Any change in its appearance should be recorded and passed to Property Services.

Photographs of Areas Sampled (Cont)

Item 346 Ref: 22-47230-20



The boxing to RSJ's (insulating Board) (Area: Second Floor, Room 26a: Tank room (within ceiling void)) contains asbestos.

Any change in its appearance should be recorded and passed to Property Services.

Item 347 Ref: 22-47230-13



The cladding to RSJ's above and below windows (insulating Board) (Area: Mezzanine Floor, Room 27a: above room 27) contains asbestos.

Any change in its appearance should be recorded and passed to Property Services.

Item 348 Ref: 22-47230-14



The walls (insulating Board) (Area: Mezzanine Floor, Room 27a: above room 27) contains asbestos.

Any change in its appearance should be recorded and passed to Property Services.

Photographs of Areas Sampled (Cont)

Item 349 Ref: 22-47230-15



The debris to the floor (insulating Board) (Area: Mezzanine Floor, Room 27a: above room 27) contains asbestos.

Any change in its appearance should be recorded and passed to Property Services.

Item 350 Ref: 22-47230-23



The high level horizontal boxing (Insulating board) (Area: Second Floor, Room 37a: Office Lobby) contains asbestos.

Any change in its appearance should be recorded and passed to Property Services.

Item 351 Ref: Presumed



The column cladding inner cladding to column at location of PIR sensor (First Floor Staircase/Stairwell 1/002) is presumed to contain asbestos.

Any change in its appearance should be recorded and passed to Property Services.

Photographs of Areas Sampled (Cont)



Item 352 Ref: Presumed

The fascia panel above PIR sensor (Second Floor Print Room 2/002) is presumed to contain asbestos.

Any change in its appearance should be recorded and passed to Property Services.



Item 353 Ref: Presumed

The fascia panels smoke head attached to asbestos (Second Floor Print Room 2/002) are presumed to contain asbestos.

Any change in its appearance should be recorded and passed to Property Services.



Item 354 Ref: TL000363

The boxing vertical in First Floor Cupboard Store Room 1/078 contains asbestos.

Any change in its appearance should be recorded and passed to Property Services.

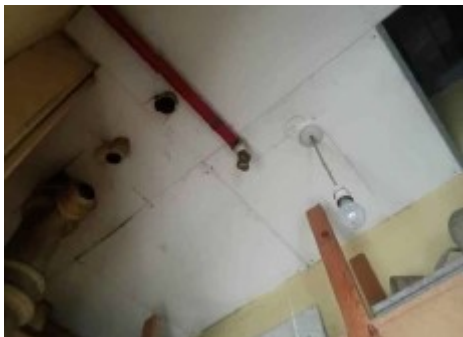
Photographs of Areas Sampled (Cont)



Item 355 Ref: As TL000363

The ceiling tile solid lying loose to shelving in First Floor Cupboard Store Room 1/078 contains asbestos.

Any change in its appearance should be recorded and passed to Property Services.



Item 356 Ref: As TL000363

The ceiling tile in First Floor Cupboard Store Room 1/078 contains asbestos.

Any change in its appearance should be recorded and passed to Property Services.



Item 357 Ref: As TL000363

The boxing vertical damaged (enclose or removal required) in First Floor Cupboard Store Room 1/078 contains asbestos.

Any change in its appearance should be recorded and passed to Property Services.

Photographs of Areas Sampled (Cont)

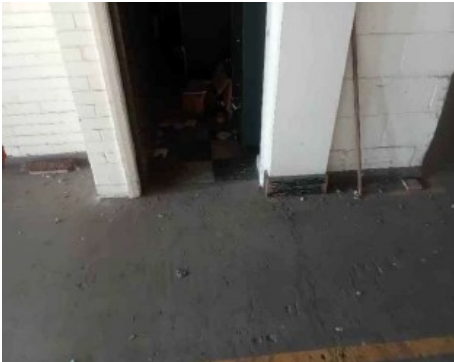
Item 358 Ref: As TL000363



The ceiling tile – solid in First Floor Cupboard Store Room 1/078 contains asbestos.

Any change in its appearance should be recorded and passed to Property Services.

Item 359 Ref: TL000364



The Floor tile (with adhesive) black and white in First Floor Cupboard Store Room 1/078 does not contain asbestos.

Five Simple Steps to Asbestos Management

Each property has a nominated site asbestos monitoring officer (SAMO). The SAMO is responsible for maintaining this register and ensuring all necessary personnel are aware of the register including all maintenance, construction and service installers; undertaking periodic inspections and liaising with the Departmental Asbestos Co-ordinator and the Asbestos Manager in Property Services as necessary.

The SAMO's role is very important but this guide is hoped to ensure the requirements are easy and simple to follow.

Step 1 – Receiving the Register

The SAMO is the tenant.

And the person is responsible for the register, where it is located and that it is kept up to date.

The register contains a plan of the premises and a photographic schedule of where the asbestos is and what risk is associated.

The SAMO must make all employees aware of the locations and should let any contractors entering the building view the register before any work is started.

Step 2 – Periodic Inspections

The SAMO must look at the locations photographed and compare the asbestos now to when the photograph was taken and complete the checklist attached (Form 2).

The checklists are to be completed periodically in accordance with the schedule attached.

Should the SAMO come across some asbestos which has been disturbed, whether during refurbishment works or during the normal course of wear and tear, they should complete Form 4 as far as possible and contact Property Services for advice and remedial action.

In the meantime, they should ensure that access to the area containing the disturbed or damaged asbestos is prohibited until Property Services has made recommendations.

Step 3 – Planned Work

All planned works that may disturb or danger any asbestos indicated, should be reported to Property Services using form 3 at least 21 days before the work is due to commence.

Step 4 – Contractors on Site

If a contractor arrives on site, the SAMO must :

- a. Make sure they read/view the register
- b. Get contractor to sign register to say he has read it (Form1).
- c. Get confirmation from the contractor that proposed works will not disturb any asbestos areas.
- d. If area is disturbed that was not identified in Register, advise Property Services immediately and complete Form 4.

Step 5 – Monitoring the Register

On completion of work get contractor to sign to say they didn't disturb any areas.

If alterations have occurred details should be forwarded to Property Services.

If you, as SAMO, are to leave your post, please notify your Departmental Co-ordinator to appoint another person and notify Property Services and the front of your register.

In the event of an exposure of asbestos, please refer to your site specific emergency procedures. However, as a minimum:

- Seal the area off completely. (Lock the area off if possible and post a notice on the door, "No access - Contact ")
- If there is any air movement systems within the premises, shut it off.
- Contact the Asbestos Manager on 07557 938966 immediately. Who will arrange for any remedial works / air monitoring.
- Start to complete the "Registration of Disturbances" form, which is in your register (Section 10 in the new style register).

Once the remedial works have been carried out and a clear air test certificate has been issued. Access to the area can be re-opened.

In the event that you are unable to contact the Asbestos Manager, please contact the Civic Centre on 520 5555 and ask for assistance from a building surveyor. Out of hours ring the City Alarm and Emergency Control room on 553 1999.

Central Safety can be contacted on 561 2311.

In the event of a fire (or drill), the asbestos register must be taken outside to show the emergency services.

Commonly Asked Questions.

- **How often should SAMO's undertake inspections of asbestos containing materials?**
The Asbestos Manager will inform the SAMO of how often the inspections should be undertaken.
- **What should a SAMO do if the asbestos containing materials are disturbed or damaged?**
The SAMO should prohibit access to the areas until the Asbestos Manager in Property Services has been contacted and given recommendations.
- **Can employees put up decorations onto asbestos containing materials?**
No decorations should be attached to asbestos containing materials. However, it is understood that some decoration is already attached to asbestos containing materials and these should be left in place.
- **Can a room with asbestos containing materials in the ceiling and wall be painted?**
Yes, as long as the material is not rubbed or sanded down, as this may result in the release of asbestos fibres.
- **Why isn't all asbestos containing materials removed from buildings?**
Because it is safer to leave asbestos containing materials in good condition in buildings. Removing the materials will result in a greater risk to health because of the consequential release of fibres.
- **When will asbestos containing material be removed from my building?**
Asbestos containing materials will be removed if work involves the disturbance of the material e.g. during the refurbishment or dismantling of part of the building or structure.
- **What should a SAMO do if he/she has had no training in use of the register?**
The SAMO should ring the Departmental Co-ordinator who will arrange training.

INSPECTION SCHEDULE

FORM 2

Item No	Area Sampled	Location Name	Inspection Frequency	Date of Return	Condition Same/change	Action Required Y/N	Comments
1.	High level boxing	Second Floor, Room 1 Meeting Room	Medium Risk – check every 3 months	24/12/23	unsealed		
2.	Debris to tops of ceiling tiles	Second Floor, Room 1 Meeting Room	Medium Risk – check every 3 months	24/12/23	unsealed		
3.	Debris to tops of ceiling tiles	Second Floor, Room 1 Meeting Room	Medium Risk – check every 3 months	24/12/23			
4.	Sealant to window seals	Second Floor, Room 1 Meeting Room	Low Risk – check every 6 months	24/03/24			
5.	High level horizontal boxing	Second Floor, Room 3 office 2	Medium Risk – check every 3 months	24/12/23	unsealed		
6.	Vertical boxing	Second Floor, Room 3 office 2	Medium Risk – check every 3 months	24/12/23	Unsealed		
7.	Rope seal to safe door	Second Floor, Room 3 office 2	Low Risk – check every 6 months	24/03/24	unsealed		
8.	High level horizontal boxing	Second Floor, Room 4 Store	Medium Risk – check every 3 months	24/12/23	Unsealed		
9.	Vertical boxing	Second Floor, Room 4 Store	Medium Risk – check every 3 months	24/12/23	unsealed		

10.	High level horizontal boxing	Second Floor, Room 5 IT Department	Medium Risk – check every 3 months	24/12/23	unsealed		
11.	Vertical boxing	Second Floor, Room 5 IT Department	Medium Risk – check every 3 months	24/12/23			
12.	Vertical boxing	Second Floor, Room 6 IT Dept Store	Medium Risk – check every 3 months	24/12/23	unsealed		
13.	High level horizontal boxing	Second Floor, Room 6 IT Dept Store	Medium Risk – check every 3 months	24/12/23	unsealed		
14.	Debris to tops of ceiling tiles	Second Floor, Room 6 IT Dept Store	Medium Risk – check every 3 months	24/12/23	unsealed		
15.	High level horizontal boxing	Second Floor, Room 7 Corridor	Medium Risk – check every 3 months	24/12/23	Unsealed		
16.	High level horizontal boxing	Second Floor, Room 8 Server Room	Medium Risk – check every 3 months	24/12/23	Unsealed		
17.	Vertical boxing	Second Floor, Room 8 Server Room	Medium Risk – check every 3 months	24/12/23	unsealed		
18.	Debris to tops of ceiling tiles	Second Floor, Room 8 Server Room	Medium Risk – check every 3 months	24/12/23	unsealed		
19.	Vertical boxing behind wood cladding	Second Floor, Room 9 Sales Office	Medium Risk – check every 3 months	24/12/23	unsealed		

20.	High level horizontal boxing behind wood cladding	Second Floor, Room 9 Sales Office	Medium Risk – check every 3 months	24/12/23	unsealed		
21.	High level horizontal boxing	Second Floor, Room 10 EPS Department	Medium Risk – check every 3 months	24/12/23	Unsealed		
22.	High level horizontal boxing	Second Floor, Room 10 EPS Department	Medium Risk – check every 3 months	24/12/23	Unsealed		
23.	Infill Panels – upstands to skylight	Second Floor, Room 10 EPS Department	Medium Risk – check every 3 months	24/12/23			
24.	High level horizontal boxing	Second Floor, Room 11 Corridor	Medium Risk – check every 3 months	24/12/23	unsealed		
25.	Infill Panels – upstands to skylight	Second Floor, Room 11 Corridor	Medium Risk – check every 3 months	24/12/23			
26.	Walls – Firebreak above door	Second Floor, Room 11 Corridor	Medium Risk – check every 3 months	24/12/23	unsealed		
27.	Vertical boxing	Second Floor, Room 12 Wages Office	Medium Risk – check every 3 months	24/12/23	Unsealed		
28.	High level horizontal boxing	Second Floor, Room 12 Wages Office	Medium Risk – check every 3 months	24/12/23	Unsealed		
29.	Floor	Second Floor, Room 12 Wages Office	Medium Risk – check every 3 months	24/12/23	unsealed		

30.	High level horizontal boxing	Second Floor, Room 13 Petty Cash Office	Medium Risk – check every 3 months	24/12/23	Unsealed		
31.	Vertical boxing	Second Floor, Room 13 Petty Cash Office	Medium Risk – check every 3 months	24/12/23	Unsealed		
32.	Walls – Firebreak above door	Second Floor, Room 13 Petty Cash Office	Medium Risk – check every 3 months	24/12/23	unsealed		
33.	High level horizontal boxing	Second Floor, Room 14 Office 3	Medium Risk – check every 3 months	24/12/23	unsealed		
34.	High level horizontal boxing	Second Floor, Room 14 Office 3	Medium Risk – check every 3 months	24/12/23			
35.	Vertical boxing and panel to boxing	Second Floor, Room 14 Office 3	Medium Risk – check every 3 months	24/12/23	unsealed		
36.	High level horizontal boxing	Second Floor, Room 15 Office 4	Medium Risk – check every 3 months	24/12/23	Unsealed		
37.	Infill Panels – upstands to skylight	Second Floor, Room 15 Office 4	Medium Risk – check every 3 months	24/12/23	Unsealed		
38.	Walls – Firebreak above door	Second Floor, Room 15 Office 4	Medium Risk – check every 3 months	24/12/23	unsealed		
39.	Ceiling – felt to roof	Second Floor, Room 15 Office 4	No Risk				
40.	Ceiling – Ceiling tiles	Second Floor, Room 16 Male WC & Lobby	Medium Risk – check every 3 months	24/12/23	unsealed		

41.	High level horizontal boxing	Second Floor, Room 16 Male WC & Lobby	Medium Risk – check every 3 months	24/12/23	unsealed		
42.	Infill Panels – upstands to skylight	Second Floor, Room 16 Male WC & Lobby	Medium Risk – check every 3 months	24/12/23			
43.	Walls – Firebreak above door	Second Floor, Room 16 Male WC & Lobby	Medium Risk – check every 3 months	24/12/23	unsealed		
44.	Ceiling – Ceiling tiles	Second Floor, Room 17 Female WC & Lobby	Medium Risk – check every 3 months	24/12/23			
45.	High level horizontal boxing	Second Floor, Room 17 Female WC & Lobby	Medium Risk – check every 3 months	24/12/23	Unsealed		
46.	Infill Panels – upstands to skylight	Second Floor, Room 17 Female WC & Lobby	Medium Risk – check every 3 months	24/12/23			
47.	Walls – Firebreak above door	Second Floor, Room 17 Female WC & Lobby	Medium Risk – check every 3 months	24/12/23	unsealed		
48.	Walls – Panels to high level wall	Second Floor, Room 18 Contracts Office	Medium Risk – check every 3 months	24/12/23	Unsealed		
49.	Boxing	Second Floor, Room 18 Contracts Office	Medium Risk – check every 3 months	24/12/23	Unsealed		
50.	Boxing – Cladding to RSJ's	Second Floor, Room 18 Contracts Office	Medium Risk – check every 3 months	24/12/23	unsealed		
51.	High level horizontal boxing	Second Floor, Room 19 Finance Office	Medium Risk – check every 3 months	24/12/23	Unsealed		

52.	High level horizontal boxing	Second Floor, Room 19 Finance Office	Medium Risk – check every 3 months	24/12/23			
53.	High level horizontal boxing	Second Floor, Room 19 Finance Office	Medium Risk – check every 3 months	24/12/23	Unsealed		
54.	Debris to tops of ceiling tiles	Second Floor, Room 19 Finance Office	Medium Risk – check every 3 months	23/12/23	unsealed		
55.	Infill Panels – upstands to skylight	Second Floor, Room 19 Finance Office	Medium Risk – check every 3 months	24/12/23			
56.	High level horizontal boxing	Second Floor, Room 20 Office 5	Medium Risk – check every 3 months	24/12/23	Unsealed		
57.	Vertical boxing behind wood cladding	Second Floor, Room 20 Office 5	Medium Risk – check every 3 months	24/12/23			
58.	Infill Panels – upstands to skylight	Second Floor, Room 20 Office 5	Medium Risk – check every 3 months	24/12/23			
59.	High level horizontal boxing	Second Floor, Room 21 Office 6	Medium Risk – check every 3 months	24/12/23			
60.	Vertical boxing	Second Floor, Room 21 Office 6	Medium Risk – check every 3 months	24/12/23			
61.	Infill Panels – upstands to skylight	Second Floor, Room 21 Office 6	Medium Risk – check every 3 months	24/12/23			

62.	High level horizontal boxing	Second Floor, Room 22 Office 7	Medium Risk – check every 3 months	24/12/23	Unsealed		
63.	Vertical boxing	Second Floor, Room 22 Office 7	Medium Risk – check every 3 months	24/12/23	Unsealed		
64.	Infill Panels – upstands to skylight	Second Floor, Room 22 Office 7	Medium Risk – check every 3 months	24/12/23			
65.	High level horizontal boxing	Second Floor, Room 23 Office 8	Medium Risk – check every 3 months	24/12/23	Unsealed		
66.	Vertical boxing	Second Floor, Room 23 Office 8	Medium Risk – check every 3 months	24/12/23	Unsealed		
67.	Infill Panels – upstands to skylight	Second Floor, Room 23 Office 8	Medium Risk – check every 3 months	24/12/23			
68.	High level horizontal boxing	Second Floor, Room 23 Office 8	Medium Risk – check every 3 months	24/12/23	Unsealed		
69.	Infill Panels – upstands to skylight	Second Floor, Room 24 Office 9	Medium Risk – check every 3 months	24/12/23			
70.	High level horizontal boxing	Second Floor, Room 24 Office 9	Medium Risk – check every 3 months	24/12/23	Unsealed		
71.	Infill Panels – upstands to skylight	Second Floor, Room 25 Finance Room 2	Medium Risk – check every 3 months	24/12/23			

72.	Infill Panels – upstands to skylight	Second Floor, Room 26 Main Office	Medium Risk – check every 3 months	24/12/23			
73.	Infill Panels – Extractor fan housing within ceiling void	Second Floor, Room 26 Main Office	Medium Risk – check every 3 months	24/12/23	unsealed		
74.	High level horizontal boxing	Second Floor, Room 26 Main Office	Medium Risk – check every 3 months	24/12/23	Unsealed		
75.	Vertical boxing over columns & RSJ's	Second Floor, Room 26 Main Office	Medium Risk – check every 3 months	24/12/23	Unsealed		
76.	Ceiling tiles	Second Floor, Room 27 Storeroom	Medium Risk – check every 3 months	24/12/23			
77.	High level horizontal boxing	Second Floor, Room 27 Storeroom	Medium Risk – check every 3 months	24/12/23	Unsealed		
78.	Infill Panels – upstands to skylight	Second Floor, Room 27 Storeroom	Medium Risk – check every 3 months	24/12/23			
79.	High level horizontal boxing	Second Floor, Room 28 Canteen	Medium Risk – check every 3 months	24/12/23	Unsealed		
80.	Vertical boxing	Second Floor, Room 28 Canteen	Medium Risk – check every 3 months	24/12/23	unsealed		
81.	Walls	Second Floor, Room 29 Main Lobby & Stairs	No Risk				

82.	Infill Panels – upstands to skylight	Second Floor, Room 29 Main Lobby & Stairs	Medium Risk – check every 3 months	24/12/23			
83.	Infill Panels – Extractor fan housing within ceiling void	Second Floor, Room 31 Bingo Store	Medium Risk – check every 3 months	24/12/23	Unsealed		
84.	High level horizontal boxing	Second Floor, Room 31 Bingo Store	Medium Risk – check every 3 months	24/12/23	unsealed		
85.	Floor	Second Floor, Room 31 Bingo Store	No Risk				
86.	Infill Panels – Extractor fan housing within ceiling void	Second Floor, Room 32 Prom Games Store	Medium Risk – check every 3 months	24/12/23	Unsealed		
87.	High level horizontal boxing	Second Floor, Room 32 Prom Games Store	Medium Risk – check every 3 months	24/12/23	Unsealed		
88.	Floor	Second Floor, Room 32 Prom Games Store	No Risk				
89.	Infill Panels – Extractor fan housing within ceiling void	Second Floor, Room 34 Frank Cronin Office	Medium Risk – check every 3 months	24/12/23	Unsealed		
90.	High level horizontal boxing	Second Floor, Room 34 Frank Cronin Office	Medium Risk – check every 3 months	24/12/23	unsealed		
91.	Walls	Second Floor, Room 34 Frank Cronin Office	No Risk				

92.	High level horizontal boxing	Second Floor, Room 35 Paddy Cronin Office	Medium Risk – check every 3 months	24/12/23	unsealed		
93.	Walls	Second Floor, Room 35 Paddy Cronin Office	No Risk				
94.	High level horizontal boxing	Second Floor, Room 36 WC & Lobby	Medium Risk – check every 3 months	24/12/23	Unsealed		
95.	High level horizontal boxing	Second Floor, Room 37 Corridor 3	Medium Risk – check every 3 months	24/12/23	unsealed		
96.	Infill Panels – upstands to skylight	Second Floor, Room 37 Corridor 3	Medium Risk – check every 3 months	24/12/23			
97.	Walls	Second Floor, Room 37 Corridor 3	No Risk				
98.	Floor – grey & red tiles to concrete	Second Floor, Room 38 Squash Court Changing Room	Low Risk – check every 6 months	24/03/24			
99.	Walls – ceramic tile adhesive	Second Floor, Room 38 Squash Court Changing Room	No Risk				
100.	Floor – grey & red tiles to concrete	Second Floor, Room 39 Squash Court Viewing Area	Low Risk – check every 6 months	24/03/24			
101.	High level horizontal boxing	Second Floor, Room 40 Reception	Medium Risk – check every 3 months	24/12/23	unsealed		
102.	Debris to tops to ceiling tiles	Second Floor, Room 40 Reception	Medium Risk – check every 3 months	24/12/23	unsealed		

103.	Walls	Second Floor, Room 41 Cupboard	No Risk				
104.	Walls – Firebreak to top of wall	Second Floor, Room 41 Cupboard	Medium Risk – check every 3 months	24/12/23	Unsealed		
105.	High level horizontal boxing	Second Floor, Room 42 Sound Cupboard	Medium Risk – check every 3 months	24/12/23	unsealed		
106.	Walls	Second Floor, Room 42 Sound Cupboard	No Risk				
107.	Walls – Firebreak to top of wall	Second Floor, Room 42 Sound Cupboard	Medium Risk – check every 3 months	24/12/23	unsealed		
108.	Boxing – underside of cladding to RSJ's above & below windows	Second Floor, Room 43 Frank Conin Suite	Medium Risk – check every 3 months	24/12/23	unsealed		
109.	High level horizontal boxing	Second Floor, Room 44 Corridor 4	Medium Risk – check every 3 months	24/12/23	unsealed		
110.	Ceiling	Second Floor, Room 44 Corridor 4	No Risk				
111.	High level horizontal boxing	Second Floor, Room 45 Key Cupboard	Medium Risk – check every 3 months	24/12/23	unsealed		
112.	Ceiling tiles	Second Floor, Room 46 Fire Exit Stairwell 1	Medium Risk – check every 3 months	24/12/23	Unsealed		
113.	Infill Panels – Upstands to skylights	Second Floor, Room 46 Fire Exit Stairwell 1	Medium Risk – check every 3 months	24/12/23	unsealed		

114.	Floor – Stair Nosings	Second Floor, Room 46 Fire Exit Stairwell 1	Low Risk – check every 6 months	24/03/24			
115.	High level horizontal boxing	Second Floor, Room 47 Comms Room	Medium Risk – check every 3 months	24/12/23	Unsealed		
116.	Vertical boxing	Second Floor, Room 47 Comms Room	Medium Risk – check every 3 months	24/12/23	Unsealed		
117.	Window – Fillet to window reveal behind cladded RSJ	Second Floor, Room 47 Comms Room	Medium Risk – check every 3 months	24/12/23	Unsealed		
118.	Debris to top of ceiling tiles	Second Floor, Room 47 Comms Room	Medium Risk – check every 3 months	24/12/23	unsealed		
119.	Window – Fillet to window reveal behind cladded RSJ	Second Floor, Room 48 First Aid Room	Medium Risk – check every 3 months	24/12/23	Unsealed		
120.	High level horizontal boxing	Second Floor, Room 48 First Aid Room	Medium Risk – check every 3 months	24/12/23	Unsealed		
121.	Vertical boxing	Second Floor, Room 48 First Aid Room	Medium Risk – check every 3 months	24/12/23	unsealed		
122.	Downpipes – filling to pipe flange knuckle	Second Floor, Room 48 First Aid Room	No Risk				
123.	Ceiling tiles	Second Floor, Room 49 Corridor 5	Medium Risk – check every 3 months	24/12/23	unsealed		

124.	Infill panels – upstands to skylights	Second Floor, Room 49 Corridor 5	Medium Risk – check every 3 months	24/12/23			
125.	High level horizontal boxing	Second Floor, Room 49 Corridor 5	Medium Risk – check every 3 months	24/12/23	unsealed		
126.	Ceiling tiles	Second Floor, Room 50 Corridor 6	Medium Risk – check every 3 months	24/12/23	unsealed		
127.	Infill panels – upstands to skylights	Second Floor, Room 50 Corridor 6	Medium Risk – check every 3 months	24/12/23			
128.	High level horizontal boxing	Second Floor, Room 50 Corridor 6	Medium Risk – check every 3 months	24/12/23	Unsealed		
129.	Walls – Firebreak above wall	Second Floor, Room 50 Corridor 6	Medium Risk – check every 3 months	24/12/23	unsealed		
130.	Infill Panels – Lining to vents within cavity	Second Floor, Room 51 Female WC & Lobby 2	Medium Risk – check every 3 months	24/12/23	unsealed		
131.	Ceiling tiles	Second Floor, Room 51 Female WC & Lobby 2	Medium Risk – check every 3 months	24/12/23	unsealed		
132.	High level horizontal boxing	Second Floor, Room 51 Female WC & Lobby 2	Medium Risk – check every 3 months	24/12/23	unsealed		
133.	Vertical boxing	Second Floor, Room 51 Female WC & Lobby 2	Medium Risk – check every 3 months	24/12/23	unsealed		
134.	Residues to backs of tiles from columns	Second Floor, Room 51 Female WC & Lobby 2	Medium Risk – check every 3 months	24/12/23	unsealed		

135.	Vessels – Rope seal to incinerator	Second Floor, Room 51 Female WC & Lobby 2	Low Risk – check every 6 months	24/03/24	unsealed		
136.	Vessels – pad to opening hatch	Second Floor, Room 51 Female WC & Lobby 2	Medium Risk – check every 3 months	24/12/23			
137.	Vessels – internal lining to incinerator	Second Floor, Room 51 Female WC & Lobby 2	Medium Risk – check every 3 months	24/12/23	Unsealed		
138.	Flue	Second Floor, Room 51 Female WC & Lobby 2	Low Risk – check every 6 months	24/03/24			
139.	Infill Panels – Lining to venting within cavity	Second Floor, Room 52 Male WC & Lobby	Medium Risk – check every 3 months	24/12/23	unsealed		
140.	Ceiling tiles	Second Floor, Room 52 Male WC & Lobby	Medium Risk – check every 3 months	24/12/23	unsealed		
141.	High level horizontal boxing	Second Floor, Room 52 Male WC & Lobby	Medium Risk – check every 3 months	24/12/23	Unsealed		
142.	Vertical boxing	Second Floor, Room 52 Male WC & Lobby	Medium Risk – check every 3 months	24/12/23	unsealed		
143.	High level horizontal boxing	Second Floor, Room 54 EX Store	Medium Risk – check every 3 months	24/12/23	unsealed		
144.	Floor	Second Floor, Room 54 EX Store	No Risk				

145.	Walls – High level panels	Second Floor, Room 55 Large Store	Medium Risk – check every 3 months	24/12/23	Unsealed		
146.	Boxing to RSJ's around windows	Second Floor, Room 55 Large Store	Medium Risk – check every 3 months	24/12/23	Unsealed		
147.	Floor	Second Floor, Room 55 Large Store	No Risk				
148.	Window – Beading to high level windows	Second Floor, Room 55 Large Store	Medium Risk – check every 3 months	24/12/23			
149.	Walls – high level panels	Second Floor, Room 56 Racking Store	Medium Risk – check every 3 months	24/12/23	unsealed		
150.	Boxing – cladding to columns	Second Floor, Room 56 Racking Store	Medium Risk – check every 3 months	24/12/23	unsealed		
151.	Horizontal boxing to RSJ's	Second Floor, Room 56 Racking Store	Medium Risk – check every 3 months	24/12/23	unsealed		
152.	Window – Beading to high level windows	Second Floor, Room 56 Racking Store	Medium Risk – check every 3 months	24/12/23			
153.	Infill panels – upstands to skylights	Second Floor, Room 56 Racking Store	Medium Risk – check every 3 months	24/12/23			
154.	Floor	Second Floor, Room 56 Racking Store	No Risk				
155.	Ceiling – Debris to ceiling tile tracking	Second Floor, Room 56 Racking Store	Medium Risk – check every 3 months	24/12/23	unsealed		

156.	Ceiling – tiles	Second Floor, Room 56 Racking Store	Medium Risk – check every 3 months	24/12/23	unsealed		
157.	Flue to Thorn boiler	Second Floor, Room 56 Racking Store	Medium Risk – check every 3 months	24/12/23			
158.	Vessels – Lining to boiler	Second Floor, Room 56 Racking Store	Medium Risk – check every 3 months	24/12/23			
159.	High level horizontal boxing	Second Floor, Room 58 Private Dining Room	Medium Risk – check every 3 months	24/12/23	unsealed		
160.	Vertical boxing	Second Floor, Room 58 Private Dining Room	Medium Risk – check every 3 months	24/12/23	unsealed		
161.	Floor	Second Floor, Room 58 Private Dining Room	No Risk				
162.	Stair nosings	Second Floor, Room 5A Fire Exit Stairwell 4	Low Risk – check every 6 months	24/03/24			
163.	High level horizontal boxing	Second Floor, Room 60 Store Room	Medium Risk – check every 3 months	24/12/23	unsealed		
164.	Ceiling – tiles	Second Floor, Room 60 Store Room	Medium Risk – check every 3 months	24/12/23	unsealed		
165.	Walls – Fillet to top of wall	Second Floor, Room 60 Store Room	Medium Risk – check every 3 months	24/12/23	unsealed		
166.	Boxing – Panel to pipe penetration	Second Floor, Room 60 Store Room	Medium Risk – check every 3 months	24/12/23			

167.	Fillet to top of wall	Second Floor, Room 60 Store Room	Medium Risk – check every 3 months	24/12/23	unsealed		
168.	Infill panels – upstands to skylights	Second Floor, Room 61 Corridor & Lift Lobby	Medium Risk – check every 3 months	24/12/23			
169.	Ceiling – tiles	Second Floor, Room 61 Corridor & Lift Lobby	Medium Risk – check every 3 months	24/12/23			
170.	Ceiling – tiles	Second Floor, Room 61 Corridor & Lift Lobby	Medium Risk – check every 3 months	24/12/23			
171.	Floor	Second Floor, Room 61 Corridor & Lift Lobby	No Risk				
172.	Panel to ceiling	Second Floor, Room 61 Corridor & Lift Lobby	Medium Risk – check every 3 months	24/12/23			
173.	High level horizontal boxing	Second Floor, Room 61 Corridor & Lift Lobby	Medium Risk – check every 3 months	24/12/23	Unsealed		
174.	Vertical boxing	Second Floor, Room 61 Corridor & Lift Lobby	Medium Risk – check every 3 months	24/12/23	unsealed		
175.	Floor – Stair Nosings	Second Floor, Room 63 Fire Exit Stairwell 3	Low Risk – check every 6 months	24/03/24			
176.	Infill panels – Upstands to skylights	Second Floor, Room 63 Fire Exit Stairwell 3	Medium Risk – check every 3 months	24/12/23			

177.	Ceiling tiles – Upstands to skylights	Second Floor, Room 63 Fire Exit Stairwell 3	Medium Risk – check every 3 months	24/12/23			
178.	Infill panels – Door header panel	Second Floor, Room 64 Link Bridge	No Risk				
179.	High level horizontal boxing	Second Floor, Room 65 Corridor 8	Medium Risk – check every 3 months	24/12/23	unsealed		
180.	Ceiling tiles	Second Floor, Room 65 Corridor 8	Medium Risk – check every 3 months	24/12/23			
181.	Infill panels – Panel to pipe penetration	Second Floor, Room 65 Corridor 8	Medium Risk – check every 3 months	24/12/23			
182.	Floor	Second Floor, Room 65 Corridor 8	No Risk				
183.	High level horizontal boxing	Second Floor, Room 66 Electric Store 1	Medium Risk – check every 3 months	24/12/23	unsealed		
184.	Vertical boxing	Second Floor, Room 66 Electric Store 1	Medium Risk – check every 3 months	24/12/23	Unsealed		
185.	Infill panels – panel behind radiator	Second Floor, Room 66 Electric Store 1	Medium Risk – check every 3 months	24/12/23			
186.	High level horizontal boxing	Second Floor, Room 67 Electric Store 2	Medium Risk – check every 3 months	24/12/23	unsealed		
187.	Floor	Second Floor, Room 67 Electric Store 2	No Risk				
188.	High level	Second Floor, Room	Medium Risk –	24/12/23	unsealed		

	horizontal boxing	68 Electric Office	check every 3 months				
189.	Vertical boxing	Second Floor, Room 68 Electric Office	Medium Risk – check every 3 months	24/12/23	unsealed		
190.	Infill panels – panel behind x2 radiator	Second Floor, Room 68 Electric Office	Medium Risk – check every 3 months	24/12/23			
191.	Floor	Second Floor, Room 68 Electric Office	No Risk				
192.	Walls – Fire break panels between RSJ & walls	Second Floor, Room 68 Electric Office	Medium Risk – check every 3 months	24/12/23			
193.	Floor	Second Floor, Room 69 Store 3	No Risk				
194.	Floor	Second Floor, Room 70 Filing Store	No Risk				
195.	Ceiling Tiles	Second Floor, Room 71 Boiler Room	Medium Risk – check every 3 months	24/12/23			
196.	High level horizontal boxing	Second Floor, Room 71 Boiler Room	Medium Risk – check every 3 months	24/12/23	unsealed		
197.	Floor	Second Floor, Room 71 Boiler Room	No Risk				
198.	Vessels – Aircell lining to boiler	Second Floor, Room 71 Boiler Room	Medium Risk – check every 3 months	24/12/23			
199.	Aircell lining to boiler casing	Second Floor, Room 71 Boiler Room	Medium Risk – check every 3 months	24/12/23			

200.	Vessels – Rope seal to door lining and viewing glass	Second Floor, Room 71 Boiler Room	Medium Risk – check every 3 months	24/12/23	unsealed		
201.	Vessels – Debris to boiler	Second Floor, Room 71 Boiler Room	Medium Risk – check every 3 months	24/12/23	unsealed		
202.	Ceiling Tiles	Second Floor, Room 72 Tank Cupboard	Medium Risk – check every 3 months	24/12/23			
203.	Ceiling Tiles	Second Floor, Room 72 Tank Cupboard	Medium Risk – check every 3 months	24/12/23			
204.	Vertical boxing	Second Floor, Room 72 Tank Cupboard	Medium Risk – check every 3 months	24/12/23			
205.	Panel to ceiling	Second Floor, Room 72 Tank Cupboard	Medium Risk – check every 3 months	24/12/23	Unsealed		
206.	Debris to floor	Second Floor, Room 72 Tank Cupboard	Medium Risk – check every 3 months	24/12/23	unsealed		
207.	Floor	Second Floor, Room 72 Tank Cupboard	No Risk				
208.	Infill Panels – Extractor fan housing within ceiling void	Second Floor, Room 73 Paint Store	Medium Risk – check every 3 months	24/12/23	Unsealed		
209.	Ceiling Tiles	Second Floor, Room 73 Paint Store	Medium Risk – check every 3 months	24/12/23	Unsealed		
210.	High level	Second Floor, Room	Medium Risk –	24/12/23	unsealed		

	horizontal boxing	73 Paint Store	check every 3 months				
211.	Infill Panels – Extractor fan housing within ceiling void	Second Floor, Room 74 Uniform Store	Medium Risk – check every 3 months	24/12/23	Unsealed		
212.	Ceiling Tiles	Second Floor, Room 74 Uniform Store	Medium Risk – check every 3 months	24/12/23			
213.	High level horizontal boxing	Second Floor, Room 74 Uniform Store	Medium Risk – check every 3 months	24/12/23	unsealed		
214.	Floor	Second Floor, Room 74 Uniform Store	No Risk				
215.	Floor – debris to floor	Second Floor, Room 74 Uniform Store	No Risk				
216.	Pipes – gasket residues to open pipe flange	Second Floor, Room 75 Main Workshop	Medium Risk – check every 3 months	24/12/23			
217.	High level horizontal boxing	Second Floor, Room 75 Main Workshop	Medium Risk – check every 3 months	24/12/23	Unsealed		
218.	Vertical boxing to columns	Second Floor, Room 75 Main Workshop	Medium Risk – check every 3 months	24/12/23	Unsealed		
219.	Walls – high level panels to walls	Second Floor, Room 75 Main Workshop	Medium Risk – check every 3 months	24/12/23			

220.	Debris to floor adjacent convector heater	Second Floor, Room 75 Main Workshop	High Risk		To be removed		
221.	Loose lying panel behind convector heater	Second Floor, Room 75 Main Workshop	High Risk		To be removed		
222.	Debris to floor adjacent Electric Office	Second Floor, Room 75 Main Workshop	High Risk		To be removed		
223.	Floor	Second Floor, Room 75 Main Workshop	No Risk				
224.	Electrical equipment – Gasket to rear of heater	Second Floor, Room 75 Main Workshop	No Risk				
225.	Loose panels within conduits	Second Floor, Room 75 Main Workshop	Medium Risk – check every 3 months	24/12/23	unsealed		
226.	Debris to top of doorway bulkhead	Second Floor, Room 75 Main Workshop	High Risk		To be removed		
227.	Walls	First Floor, Room 76 Main Stairwell	No Risk				
228.	Ceiling	First Floor, Room 80 Squash Court Changing Room	No Risk				
229.	Floor	First Floor, Room 80 Squash Court Changing Room	Low Risk – check every 6 months	24/03/24			

230.	Walls – Ceramic tile adhesive	First Floor, Room 80 Squash Court Changing Room	No Risk				
231.	Boxing to high level beams	First Floor, Room 81 Squash Court	Medium Risk – check every 3 months	24/12/23			
232.	Floor	First Floor, Room 82 Squash Court Lobby & Stairs	Low Risk – check every 6 months	24/03/24			
233.	Floor – Stair Nosings	First Floor, Room 83 Stairwell	Low Risk – check every 6 months	24/03/24			
234.	Floor – Ceiling	First Floor, Room 84 Maintenance Workshop	Medium Risk – check every 3 months	24/12/23			
235.	High level horizontal boxing	First Floor, Room 84 Maintenance Workshop	Medium Risk – check every 3 months	24/12/23			
236.	Vertical boxing	First Floor, Room 84 Maintenance Workshop	Medium Risk – check every 3 months	24/12/23			
237.	Floor – Stair Nosings	First Floor, Room 85 Fire Exit Stairwell 1	Medium Risk – check every 3 months	24/12/23			
238.	Rope seal to incinerator	First Floor, Room 86 Female WC & Lobby	Medium Risk – check every 3 months	24/12/23	unsealed		
239.	Pad to opening hatch	First Floor, Room 86 Female WC & Lobby	Medium Risk – check every 3 months	24/12/23			
240.	Internal lining to incinerator	First Floor, Room 86 Female WC & Lobby	Medium Risk – check every 3 months	24/12/23	unsealed		

241.	Flue	First Floor, Room 86 Female WC & Lobby	Low Risk – check every 6 months	24/03/24			
242.	Ceiling	First Floor, Room 86 Female WC & Lobby) – Medium Risk	Medium Risk – check every 3 months	24/12/23			
243.	High level horizontal boxing	First Floor, Room 86 Female WC & Lobby	Medium Risk – check every 3 months	24/12/23			
244.	Vertical boxing	First Floor, Room 86 Female WC & Lobby	Medium Risk – check every 3 months	24/12/23			
245.	Infill Panels – Lining to vertical boxing housing flue	First Floor, Room 86 Female WC & Lobby	Medium Risk – check every 3 months	24/12/23			
246.	Ceiling	First Floor, Room 87 Male WC & Lobby	Medium Risk – check every 3 months	24/12/23			
247.	High level horizontal boxing	First Floor, Room 87 Male WC & Lobby	Medium Risk – check every 3 months	24/12/23			
248.	Vertical boxing	First Floor, Room 87 Male WC & Lobby	Medium Risk – check every 3 months	24/12/23			
249.	Infill panels – lining to vertical boxing pipework	First Floor, Room 87 Male WC & Lobby	Medium Risk – check every 3 months	24/12/23			
250.	Floor – Stair nosings	First Floor, Room 88 Fire Exit Stairwell 2	Low Risk – check every 6 months	24/03/24			

251.	Ceiling	First Floor, Room 90 Print Room	Medium Risk – check every 3 months	24/12/23			
252.	High level horizontal boxing	First Floor, Room 90 Print Room	Medium Risk – check every 3 months	24/12/23			
253.	Vertical boxing	First Floor, Room 90 Print Room	Medium Risk – check every 3 months	24/12/23			
254.	Ceiling	First Floor, Room 91 Design Room	Medium Risk – check every 3 months	24/12/23			
255.	High level horizontal boxing	First Floor, Room 91 Design Room	Medium Risk – check every 3 months	24/12/23			
256.	Vertical boxing	First Floor, Room 91 Design Room	Medium Risk – check every 3 months	24/12/23			
257.	Floor – Stair nosings	First Floor, Room 93 Fire Exit Stairwell 3	Low Risk – check every 6 months	24/03/24			
258.	Ceiling tiles	First Floor, Room 95 Main Printer Workshop	Medium Risk – check every 3 months	24/12/23	Unsealed		
259.	High level horizontal boxing	First Floor, Room 95 Main Printer Workshop	Medium Risk – check every 3 months	24/12/23	Unsealed		
260.	Vertical boxing	First Floor, Room 95 Main Printer Workshop	Medium Risk – check every 3 months	24/12/23	Unsealed		
261.	Boxing to heater flue	First Floor, Room 95 Main Printer Workshop	Medium Risk – check every 3 months	24/12/23	unsealed		

262.	Loose boards within trunking	First Floor, Room 95 Main Printer Workshop	Medium Risk – check every 3 months	24/12/23	unsealed		
263.	Vessels – gasket to boiler	First Floor, Room 95 Main Printer Workshop	Medium Risk – check every 3 months	24/12/23			
264.	Infill panels – door header above store 79	First Floor, Room 95 Main Printer Workshop	Medium Risk – check every 3 months	24/12/23			
265.	Infill panels – door header above store 78	First Floor, Room 95 Main Printer Workshop	Medium Risk – check every 3 months	24/12/23			
266.	Walls	Ground Floor, Room 96 Entrance Lobby	No Risk				
267.	High level horizontal boxing	Ground Floor, Room 98 Lift Motor Room	Medium Risk – check every 3 months	24/12/23			
268.	High level horizontal boxing	Ground Floor, Room 99 Office 1	Medium Risk – check every 3 months	24/12/23			
269.	High level horizontal boxing	Ground Floor, Room 101 Maintenance Workshop	Medium Risk – check every 3 months	24/12/23			
270.	Vessels – presumed gasket within Sadia water heater	Ground Floor, Room 101 Maintenance Workshop	Medium Risk – check every 3 months	24/12/23			
271.	High level horizontal boxing	Ground Floor, Room 102 Maintenance Workshop 2	Medium Risk – check every 3 months	24/12/23			

272.	High level horizontal boxing	Ground Floor, Room 104 Electric Store Room	Medium Risk – check every 3 months	24/12/23			
273.	High level horizontal boxing	Ground Floor, Room 105 Female WC & Lobby	Medium Risk – check every 3 months	24/12/23			
274.	Flue	Ground Floor, Room 105 Female WC & Lobby	Low Risk – check every 6 months	24/03/24			
275.	Surround to hatch and burner	Ground Floor, Room 105 Female WC & Lobby	Medium Risk – check every 3 months	24/12/23			
276.	Lining to incinerator	Ground Floor, Room 105 Female WC & Lobby	Medium Risk – check every 3 months	24/12/23	Should be encapsulated		
277.	High level horizontal boxing	Ground Floor, Room 106 Male WC & Lobby	Medium Risk – check every 3 months	24/12/23			
278.	Vertical boxing with small tank cupboard above lobby	Ground Floor, Room 106 Male WC & Lobby	Medium Risk – check every 3 months	24/12/23			
279.	Electrical equipment – panels between square D isolating box	Ground Floor, Room 109 Switch Room	No Risk				
280.	Vessels – Gasket to heater	Ground Floor, Room 110 Gas intake/Heater Area	No Risk				
281.	High level horizontal boxing	Ground Floor, Room 110 Gas intake/Heater Area	Medium Risk – check every 3 months	24/12/23			

282.	High level horizontal boxing	Ground Floor, Room 110 Gas intake/Heater Area	Medium Risk – check every 3 months	24/12/23			
283.	High level horizontal boxing	Ground Floor, Room 111 Photo Production Area	Medium Risk – check every 3 months	24/12/23			
284.	Floor – Stair nosing	Ground Floor, Room 112 Fire Exit Lobby	Low Risk – check every 6 months	24/03/24			
285.	High level horizontal boxing	Ground Floor, Room 114 Lift Motor Room 2	Medium Risk – check every 3 months	24/12/23			
286.	High level horizontal boxing	Ground Floor, Room 115 Sprinkler Outlet Room	Medium Risk – check every 3 months	24/12/23			
287.	Pipes	Ground Floor, Room 115 Sprinkler Outlet Room	No Risk				
288.	High level horizontal boxing	Ground Floor, Room 116 Plate Room	Medium Risk – check every 3 months	24/12/23			
289.	Pads to battery tester	Ground Floor, Room 116 Plate Room	No Risk				
290.	High level horizontal boxing	Ground Floor, Room 117 Store Room	Medium Risk – check every 3 months	24/12/23			
291.	High level horizontal boxing	Ground Floor, Room 118 Security Room	Medium Risk – check every 3 months	24/12/23			
292.	High level horizontal boxing	Ground Floor, Room 119 Main Factory Floor	Medium Risk – check every 3 months	24/12/23			

293.	High level horizontal boxing above former wall	Ground Floor, Room 119 Main Factory Floor	Medium Risk – check every 3 months	24/12/23			
294.	Sealing mastic to ducting joints	Ground Floor, Room 119 Main Factory Floor	Low Risk – check every 6 months	24/03/24			
295.	Floor – tiles to section left rear of factory floor	Ground Floor, Room 119 Main Factory Floor	No Risk				
296.	Debris to horizontal timber boxing	Ground Floor, Room 119 Main Factory Floor	Medium Risk – check every 3 months	24/12/23			
297.	High level horizontal boxing	Ground Floor, Room 122 Vehicle Bay 1	Medium Risk – check every 3 months	24/12/23			
298.	High level horizontal boxing	Ground Floor, Room 123 Office	Medium Risk – check every 3 months	24/12/23			
299.	High level horizontal boxing	Ground Floor, Room 124 Office 2	Medium Risk – check every 3 months	24/12/23			
300.	High level horizontal boxing	Ground Floor, Room 126 Vehicle Bay 2	Medium Risk – check every 3 months	24/12/23			
301.	High level horizontal boxing	Ground Floor, Room 127 Vehicle Bay 3	Medium Risk – check every 3 months	24/12/23			
302.	High level bulkhead boxing	Ground Floor, Room 127 Vehicle Bay 3	Medium Risk – check every 3 months	24/12/23			

303.	High level horizontal boxing	Ground Floor, Room 129 Vehicle Maintenance Area	Medium Risk – check every 3 months	24/12/23			
304.	Packers below metal flue in pipe penetration behind convector heater	Ground Floor, Room 129 Vehicle Maintenance Area	Medium Risk – check every 3 months	24/12/23			
305.	Mastic to ductwork	Ground Floor, Room 129 Vehicle Maintenance Area	No Risk				
306.	Vessels – gasket to Benson convector heater boiler	Ground Floor, Room 129 Vehicle Maintenance Area	No Risk				
307.	Vessels – Internal gasket to Benson convector heater boiler	Ground Floor, Room 129 Vehicle Maintenance Area	No Risk				
308.	Floor – Expansion putty to floor	Ground Floor, Room 129 Vehicle Maintenance Area	No Risk				
309.	High level horizontal boxing	Ground Floor, Room 130 Vehicle Bay 4	Medium Risk – check every 3 months	24/12/23	unsealed		
310.	Floor – Expansion putty to floor	Ground Floor, Room 130 Vehicle Bay 4	No Risk				

311.	Walls – packer to flue penetration	Ground Floor, Room 131 Vehicle Bay 4 Unit B	Medium Risk – check every 3 months	24/12/23	unsealed		
312.	Ceiling – Original roof below new external metal roof	Ground Floor, Room 131 Vehicle Bay 4 Unit B	Medium Risk – check every 3 months	24/12/23			
313.	Debris to floor around perimeter	Ground Floor, Room 131 Vehicle Bay 4 Unit B	No Risk				
314.	Flashpad used as packer within cable trunking	Ground Floor, Room 131 Vehicle Bay 4 Unit B	Medium Risk – check every 3 months	24/12/23	unsealed		
315.	Loose board sitting in trunking	Ground Floor, Room 131 Vehicle Bay 4 Unit B	No Risk				
316.	Floor	Ground Floor, Room 137 Former WC2	Low Risk – check every 6 months	24/03/24			
317.	Floor	Ground Floor, Room 139 Exit Lobby	Low Risk – check every 6 months	24/03/24			
318.	Floor	Ground Floor, Room 141 Office	Low Risk – check every 6 months	24/03/24			
319.	Floor	Ground Floor, Room 142 Office	Low Risk – check every 6 months	24/03/24			
320.	Floor	Ground Floor, Room 143 Staff Room	Low Risk – check every 6 months	24/03/24			
321.	Floor	Ground Floor, Room 144 Store Room	Low Risk – check every 6 months	24/03/24			
322.	Floor	Ground Floor, Room 144 Store Room	Low Risk – check every 6 months	24/03/24			
323.	Floor	Ground Floor, Room 145 Corridor	Low Risk – check every 6 months	24/03/24			

324.	Floor	Ground Floor, Room 146 Store Cupboard	Low Risk – check every 6 months	24/03/24			
325.	Floor	Ground Floor, Room 147 Kitchenette	Low Risk – check every 6 months	24/03/24			
326.	Floor – Flue from former sanitary incinerator	Ground Floor, Room 148 Staff WC	Low Risk – check every 6 months	24/03/24			
327.	Floor – Debris to floor adjacent to oil tank	Floor Roof, Room 149 Roof	Medium Risk – check every 3 months	24/12/23	Unsealed		
328.	Flue and cowls	Floor Roof, Room 149 Roof	Low Risk – check every 6 months	24/03/24			
329.	Felt to roof	Floor Roof, Room 149 Roof	No Risk				
330.	Loose lying panels	Floor Roof, Room 150 Header tank room	Medium Risk – check every 3 months	24/12/23	Unsealed		
331.	Flue	Floor Roof, Room 150 Header tank room	Low Risk – check every 6 months	24/03/24			
332.	Rainwater goods to block 1B gable end	Floor 0, Room 152 External	Low Risk – check every 6 months	24/03/24			
333.	Rainwater goods Jointing compound between cement gutters to Block 1B	Floor 0, Room 152 External	Low Risk – check every 6 months	24/03/24			

334.	Fascia – cement fascia behind metal profile to Block 1B	Floor 0, Room 152 External	Low Risk – check every 6 months	24/03/24			
335.	Downpipes to block 1B	Floor 0, Room 152 External	Low Risk – check every 6 months	24/03/24			
336.	Damp proof course to walls above flat roof to 1C	Floor 0, Room 152 External	No Risk				
337.	Mastic to PVC windows on Block 1A	Floor 0, Room 152 External	No Risk				
338.	Render to concrete entrance canopy	Floor 0, Room 152 External	No Risk				
339.	<i>Debris to path at front elevation – removed as sample</i>	<i>Floor 0, Room 152 External</i>	<i>Medium Risk – check every 3 months</i>	<i>n/a</i>			<i>Removed as sample</i>
340.	Door – mastic to timber door frames	Floor 0, Room 152 External	Low Risk – check every 6 months	24/03/24			
341.	Damp proof course to block 1A	Floor 0, Room 152 External	Low Risk – check every 6 months	24/03/24			
342.	Down pipe to gable end	Floor 0, Room 152 External	Low Risk – check every 6 months	24/03/24			

343.	Down pipe debris under samples downpipe	Floor 0, Room 152 External	Medium Risk – check every 3 months	24/12/23			
344.	Firebreak to tops of wall outside female WC	Second Floor, Room 26A Tank Room – within ceiling void	Medium Risk – check every 3 months	24/12/23	Unsealed		
345.	Boxing to RSJ's	Second Floor, Room 26A Tank Room – within ceiling void	Medium Risk – check every 3 months	24/12/23	Unsealed		
346.	Boxing to RSJ's	Second Floor, Room 26A Tank Room – within ceiling void	Medium Risk – check every 3 months	24/12/23	unsealed		
347.	Boxing – Cladding to RSJ's above & below windows	Floor Mezzanine, Room 27A Mezzanine above room 27	Medium Risk – check every 3 months	24/12/23	Unsealed		
348.	Walls	Floor Mezzanine, Room 27A Mezzanine above room 27	Medium Risk – check every 3 months	24/12/23	unsealed		
349.	Debris to floor	Floor Mezzanine, Room 27A Mezzanine above room 27	Medium Risk – check every 3 months	24/12/23			
350.	High level horizontal boxing	Second Floor, Room 37A Office Lobby	Medium Risk – check every 3 months	24/12/23	unsealed		
351.	Column cladding inner cladding to column at	First Floor Staircase/Stairwell 1/002	Very Low Risk	24/12/2025			

	location of PIR sensor						
352.	Fascia panel above PIR sensor	Second Floor Print Room 2/002	Very Low Risk	24/12/2025			
353.	Fascia panels smoke head attached to asbestos	Second Floor Print Room 2/002	Very Low Risk	24/12/2025			
354.	Boxing Vertical	First Floor Cupboard Store Room 1/078	Low Risk	24/5/2025			
355.	Ceiling Tile solid lying loose to shelving	First Floor Cupboard Store Room 1/078	Low Risk	24/5/2025			
356.	Ceiling Tile	First Floor Cupboard Store Room 1/078	Low Risk	24/5/2025			
357.	Boxing vertical damaged, enclose or removal required	First Floor Cupboard Store Room 1/078	Low Risk	24/5/2025			
358.	Ceiling Tile – Solid	First Floor Cupboard Store Room 1/078	Low Risk	24/5/2025			
359.	Floor tile (with adhesive) black and white	First Floor Cupboard Store Room 1/078	No Risk	N/A			

Good Practice Guidance:

- Take photographs of ACMs for each inspection and store for future reference
- Compare previous photographs with current condition state to determine whether there has been any deterioration the last inspection
- Replace missing/damaged asbestos labels/stickers

Comments:

Sunderland
City Council

School/Site:	
Date of inspection:	
Inspected by (signature):	
Print Name:	